




## Carrick House, Royal Crescent E16

£625,000

 2  2  1



- Two Bedrooms
- Private Balcony
- Swimming Pool
- Close to Pontoon Dock DLR Station 0.3 mi
- 881 Sq.Ft.
- Two Bathrooms
- Concierge
- Gymnasium
- Luxury Bathrooms
- Viewing Essential

## Carrick House

Approximate Gross Internal Floor Area = 81.8 sq m / 881 sq ft

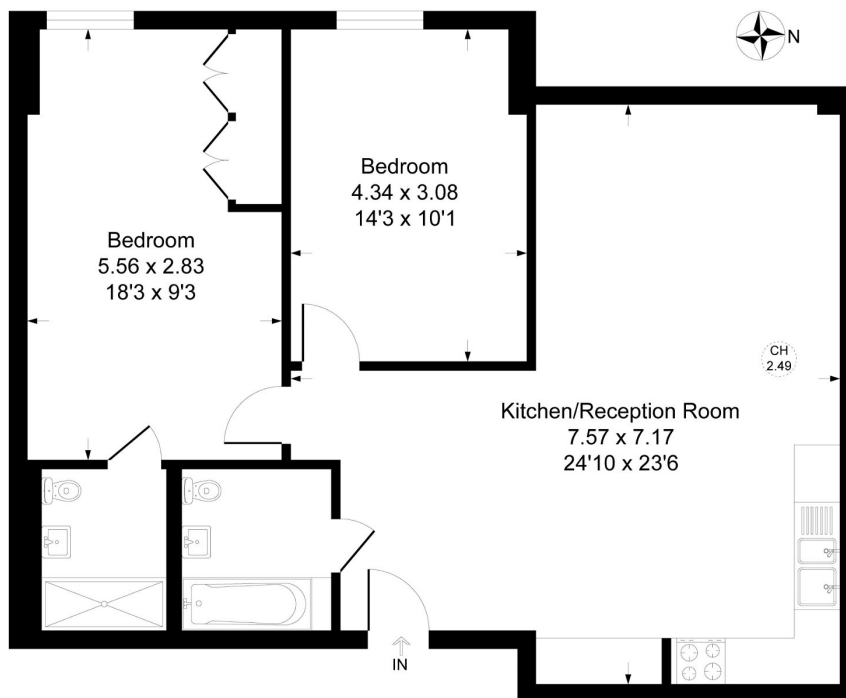


Illustration for identification purposes only, measurements are approximate, not to scale.

A fantastic opportunity to purchase this well presented two bedroom, two bathroom apartment in the highly desirable Royal Crescent development in Royal Wharf.