



HENRY  **WILTSHIRE**

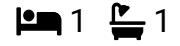
www.henrywiltshire.co.uk

Henry Wiltshire Limited Company Registration No. 07120440 VAT Registration No. 994 397 354

Registered Office: 2 Laybourne House, Admirals Way, Canary Wharf, London, United Kingdom E14 9UH

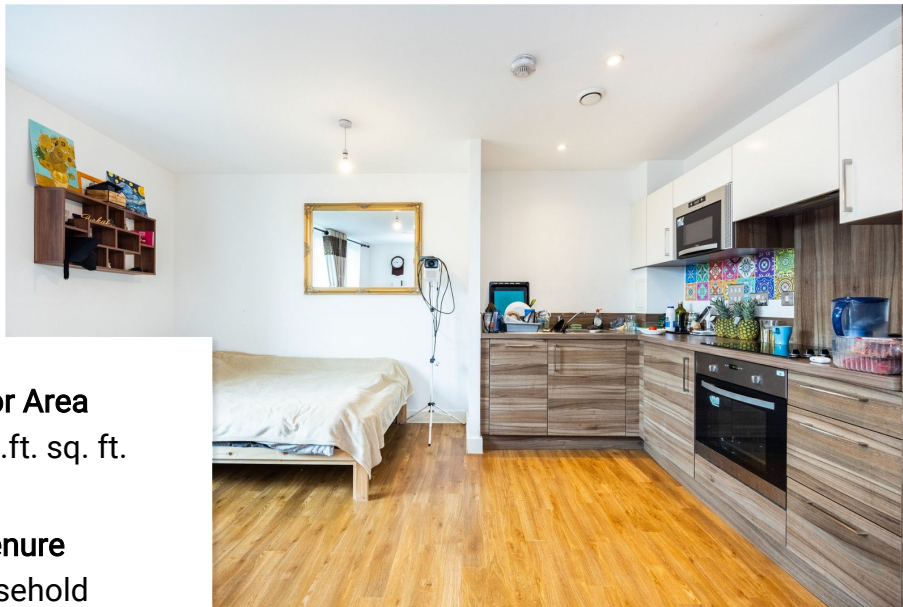
Connaught Heights, 2, Agnes George Walk

£315,000



Contemporary and spacious 571 sq. ft. one bedroom 1st floor apartment set in this popular Waterside Park development.





Floor Area
571 sq.ft. sq. ft.

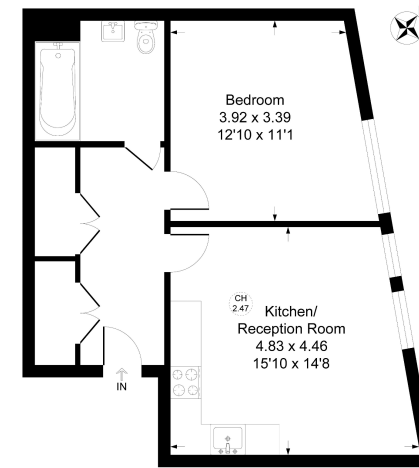
Tenure
Leasehold

Service Charge
££1800.00 per annum

Ground Rent
££300.00 per annum



Connaught Heights
Approximate Gross Internal Floor Area = 53.0 sq m / 571 sq ft



First Floor

Illustration for identification purposes only, measurements are approximate, not to scale.

Energy Efficiency Rating

	Current	Potential
<i>Very energy efficient - lower running costs</i>		
(92 plus) A		
(81-91) B	85	85
(69-80) C		
(55-68) D		
(39-54) E		
(21-38) F		
(1-20) G		
<i>Not energy efficient - higher running costs</i>		
England & Wales	EU Directive 2002/91/EC	

UK Offices | Canary Wharf - E14 | Nine Elms - SE1 | Royal Docks - E16 | Bow - E3 | Hayes, Middlesex - UB3 | Manchester - M2

International Offices | Dublin | Abu Dhabi | Hong Kong | Singapore

