



**HENRY**  **WILTSHIRE**

[www.henrywiltshire.co.uk](http://www.henrywiltshire.co.uk)

Henry Wiltshire Limited Company Registration No. 07120440 VAT Registration No. 994 397 354

Registered Office: 2 Laybourne House, Admirals Way, Canary Wharf, London, United Kingdom E14 9UH

# Capital East Apartments, 21, Western Gateway

Guide Price £625,000

🛏️ 2 🪑 2 🚿 1

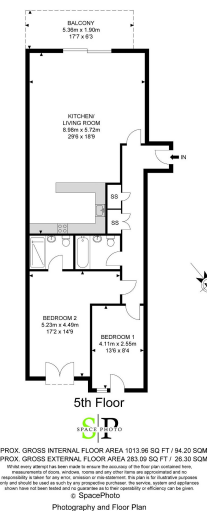


- Contemporary 5th Floor 2 Bedroom Apartment
- Modern Well Equipped Kitchen
- 1013 Sq Ft
- SECURE UNDERGROUND PARKING SPACE
- Residents Gymnasium & Sauna
- Two Recently Fitted Luxurious Bathrooms
- Large Balcony Over Looking The Dock
- Floor To Ceiling Windows
- Concierge
- Beautiful Views Across the Dock

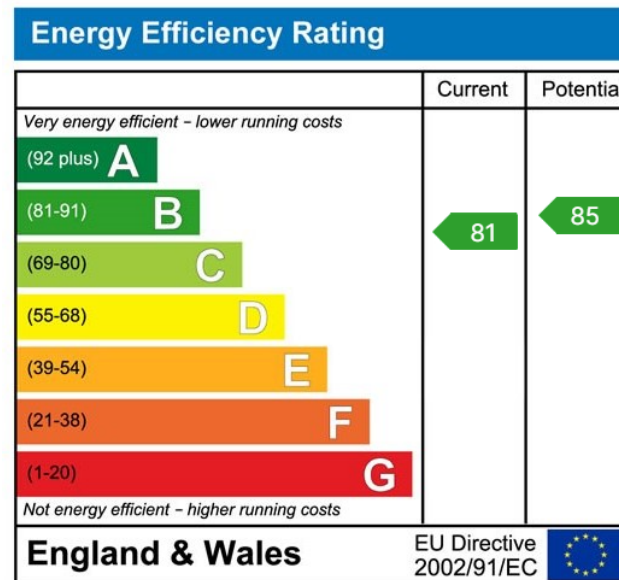




Capital East Apartments



Stunning and spacious two bedroom, two bathroom, apartment with newly fitted luxurious bathroom suite, wood flooring and lovely views across the Dock, within the popular Capital East development in the heart of Royal Victoria.



UK Offices | Canary Wharf - E14 | Nine Elms - SE1 | Royal Docks - E16 | Bow - E3 | Hayes, Middlesex - UB3 | Manchester - M2

International Offices | Dublin | Abu Dhabi | Hong Kong | Singapore

