



Harcourt House, 19 Cavendish Square, Marylebone, London, W1G



An elegant eight-storey Edwardian Grade II listed apartment building in the heart of the West End.

Originally developed in 1907 as a residential mansion block, Harcourt House has since been converted into a number of residential, office, and medical suites.

A grand Edwardian Grade II listed apartment building overlooking Cavendish Square in London's Marylebone is now beautifully restored to present 25 generously proportioned homes. The eight-story building is one of the tallest on the square, with spectacular views over London from the top floor.



ST JAMES'S PARK

BUCKINGHAM PALACE

GREEN PARK

HYDE PARK

BERKELEY SQUARE

GROSVENOR SQUARE

SELFRIDGES

MAYFAIR

BOND STREET

REGENT STREET

MARYLEBONE



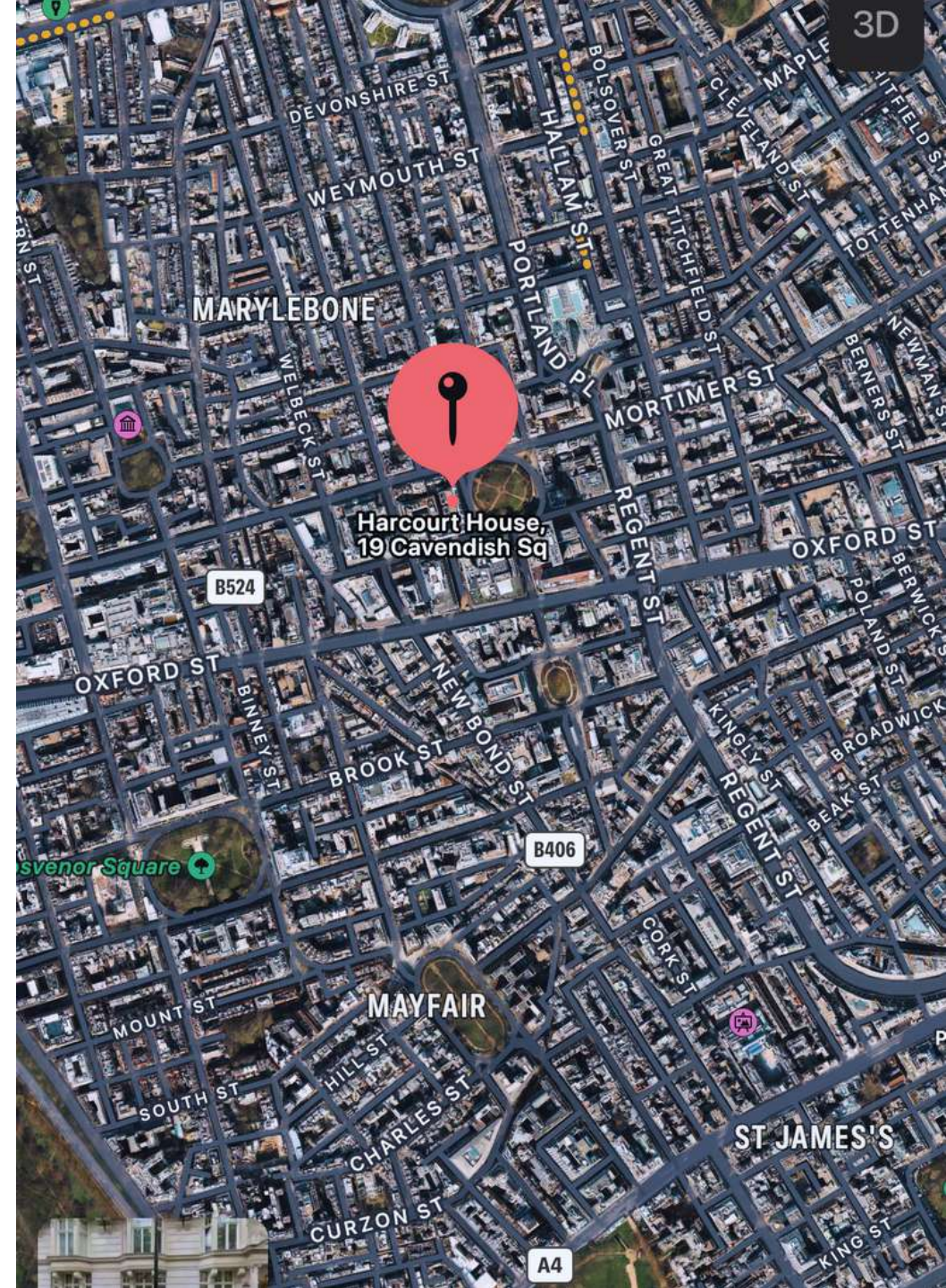
SOHO

OXFORD STREET

FITZROVIA

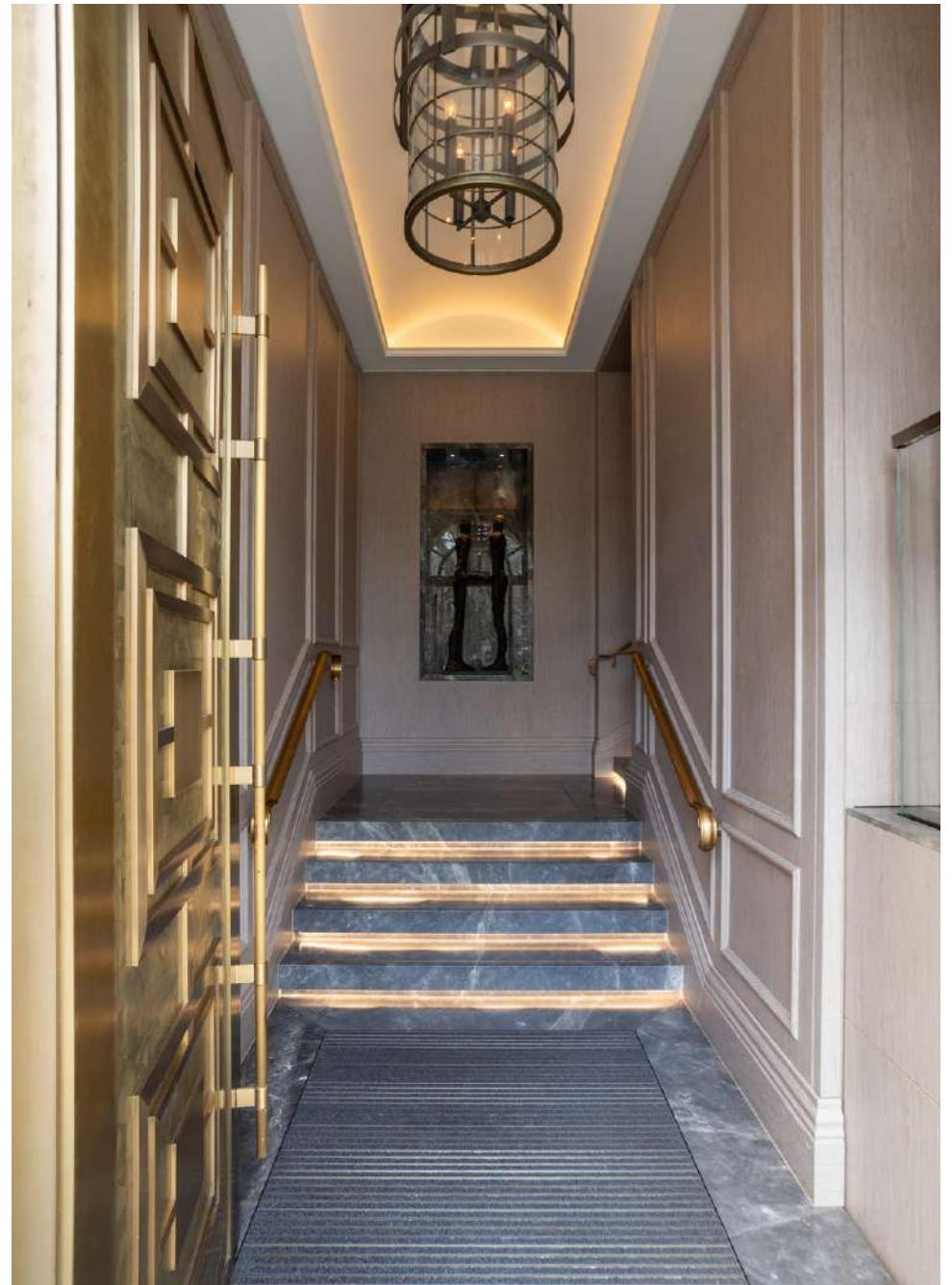
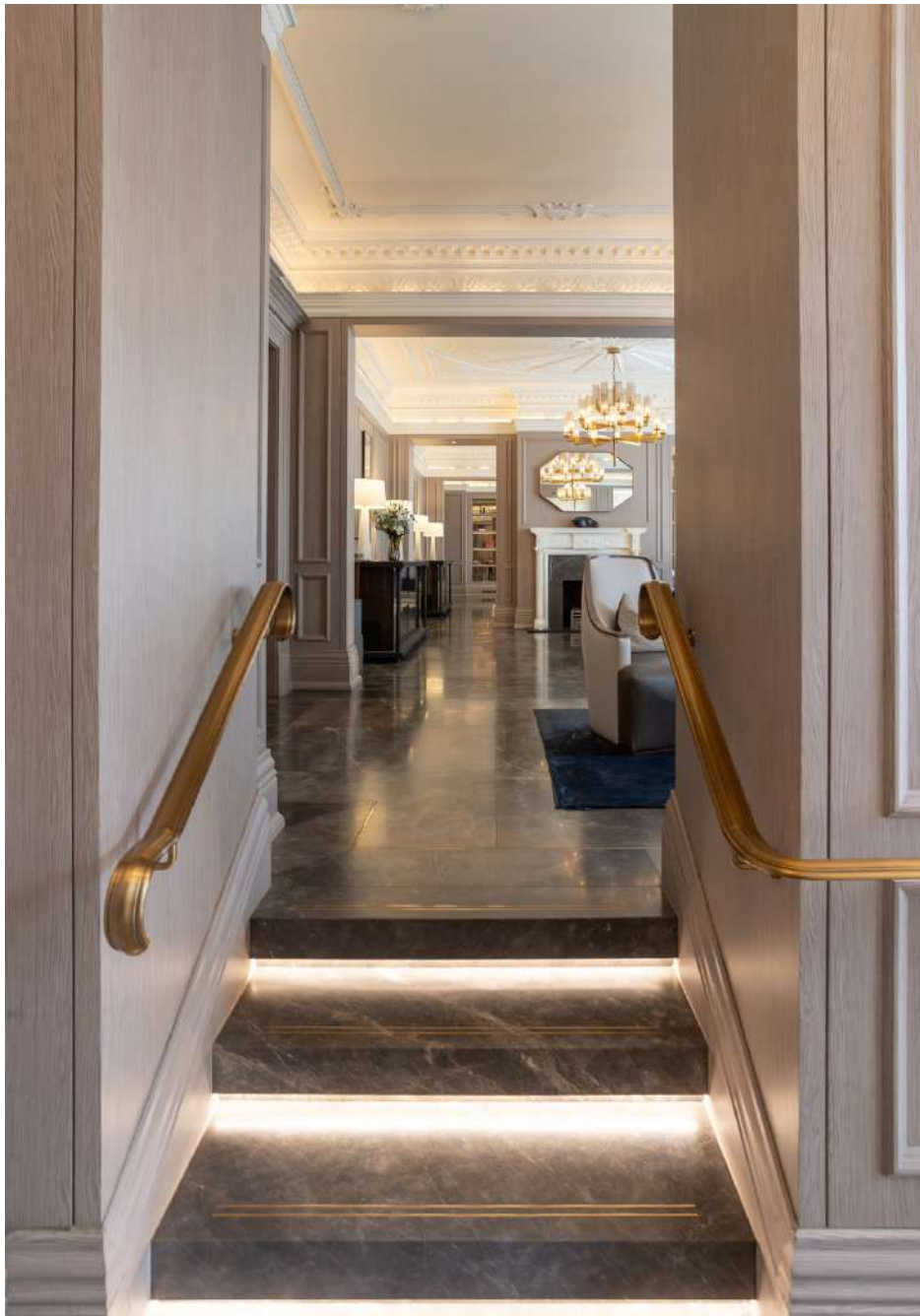
Location

Where Marylebone meets Mayfair



View on to Cavendish Square from Harcourt House

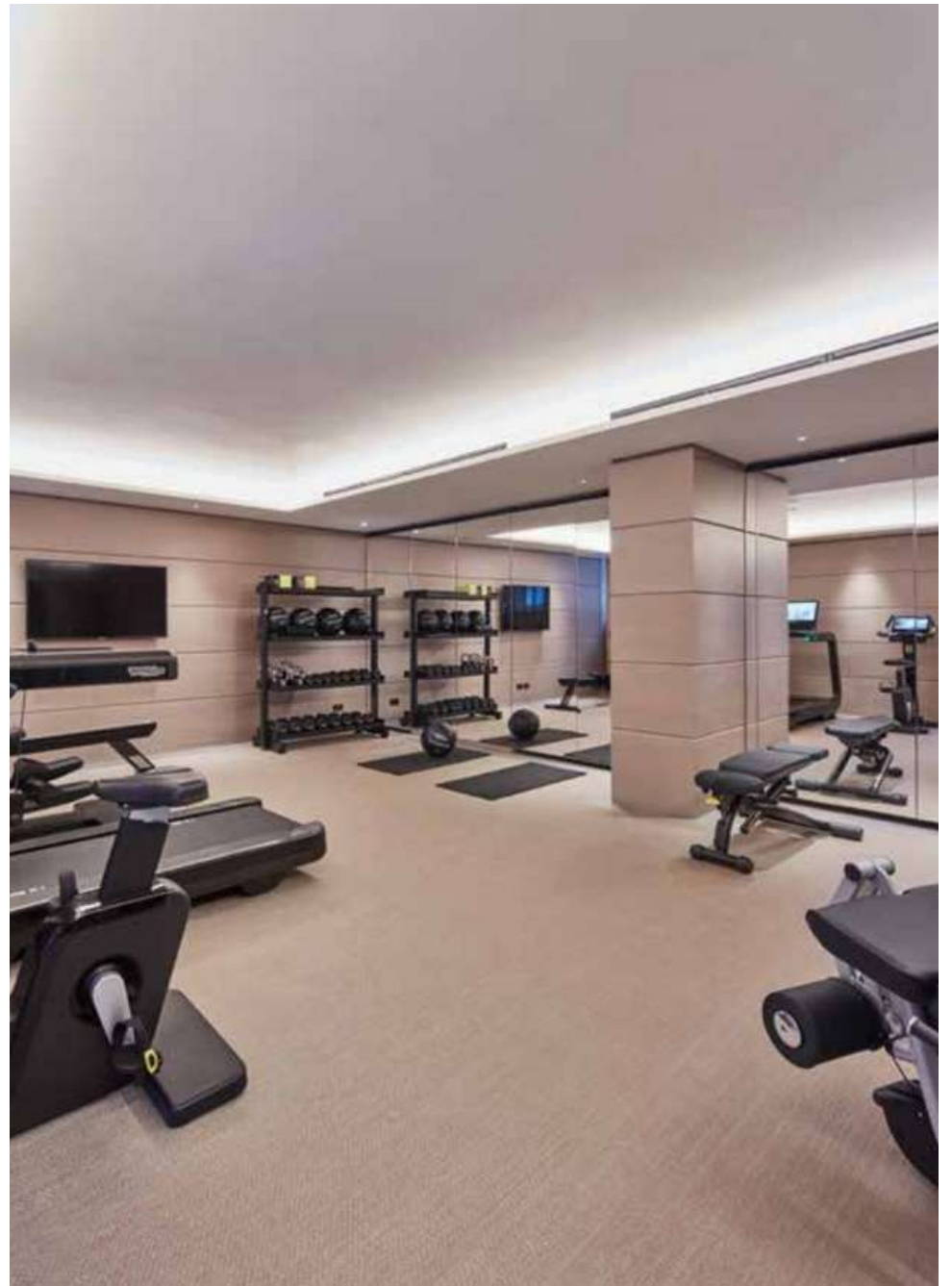




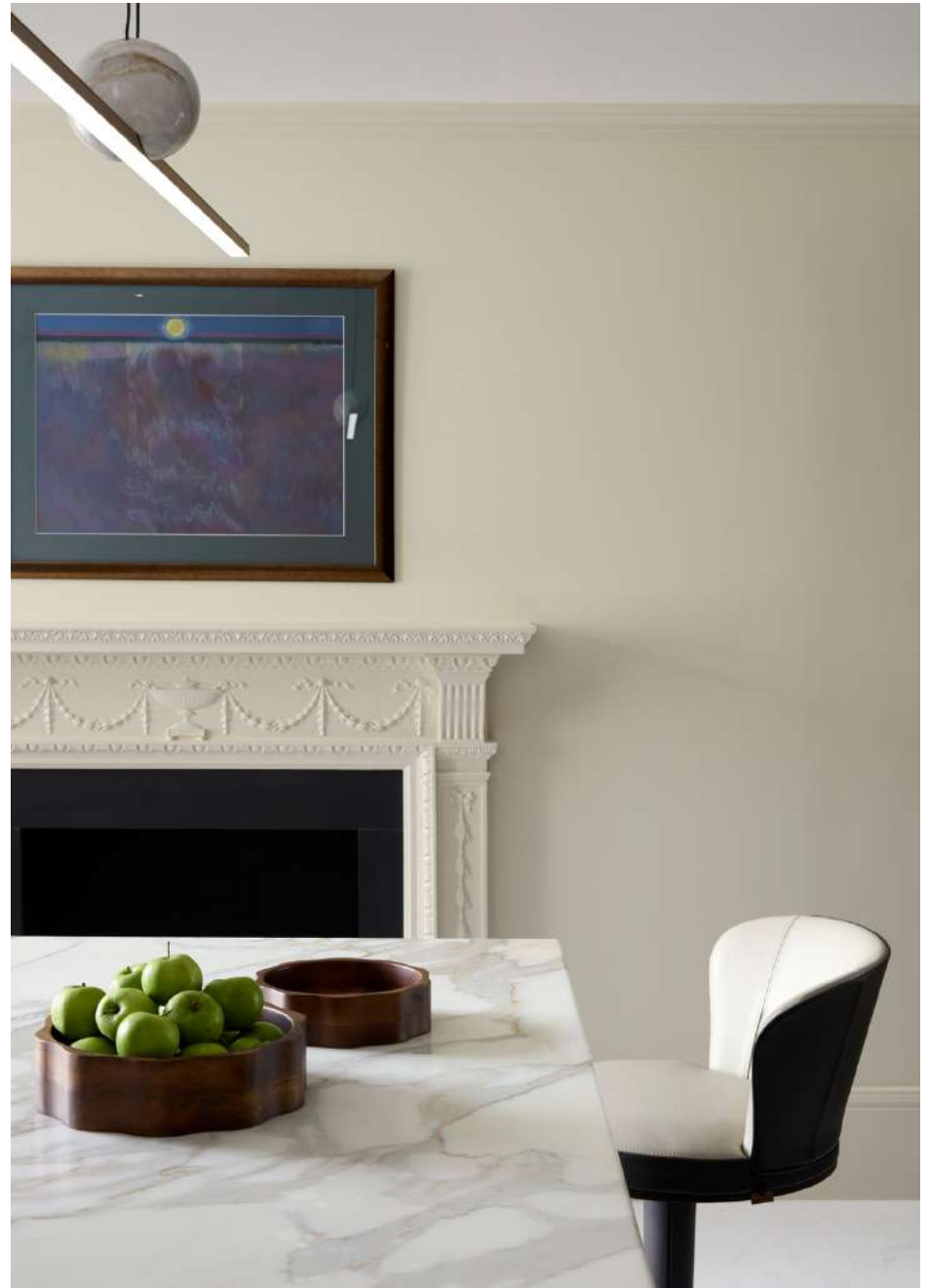


The finest then, becomes the finest now.

- 997-year leasehold •
- 24-hour concierge and security •
- High-end specifications with underfloor heated systems •
 - Integrated Gaggenau and Miele appliances •
- Full spa with changing rooms, sauna, steam room, treatment areas and studio •
 - Gymnasium •
- Business centre with meeting rooms •
 - Cycle storage •













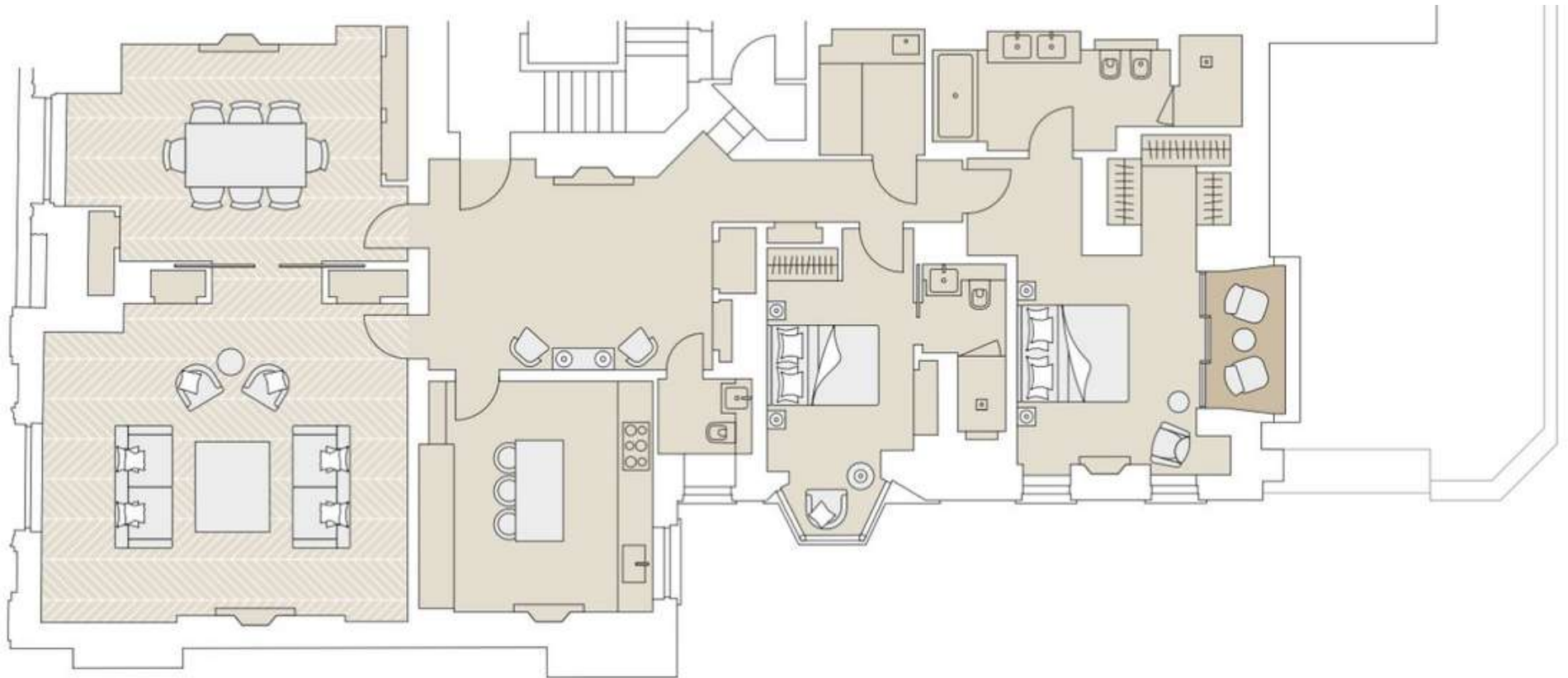






2- bedroom apartment 5.04

186.6 sq m/2,009 sq ft





www.longrad.com | info@longrad.com | +44 7708 540811