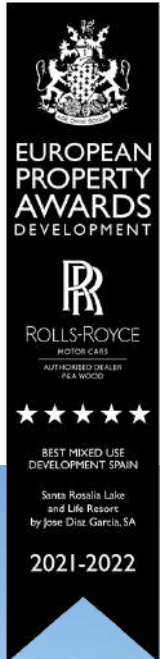
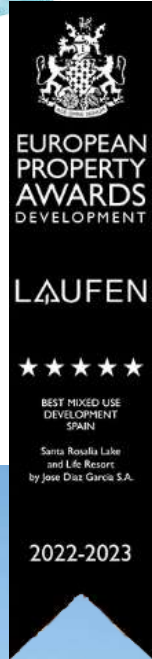




Santa Rosalia Lake and Life Resort



Welcome to Joyfulness



Spain's First and Unique Crystal Lagoon Resort

Santa Rosalia Lake and Life Resort



Multi Award Winning Resort

- Exclusive Crystal Blue Lagoon
- Unique Leisure Areas
- White Sandy Beaches
- Sports Facilities
- 24 Hour Security
- 10 Minutes to Coast
- 15 minutes to City Center
- 30 Minutes to Airport

Santa Rosalia is an incredible new concept located in our region of Murcia.

Just 10 minutes to the wonderful beaches of the Mar Menor and Mediterranean Seas.

A mixture of natural surroundings blending into the ultra modern Crystal Blue Lagoon with stunning white sandy beaches and many sporting and relaxing activities.





Santa Rosalía

lake and life resort

Lake & Recreational Areas



PREMIUM
Spain PROPERTIES

Authorised Agent

- 16.000 M2 OF CRYSTAL BLUE WATER
 - REVOLUTIONARY TECHNOLOGY
 - BEACH BARS AND RESTAURANT
 - WHITE SANDY BEACHES
 - SPORTS FACILITIES
 - ADVENTURE GOLF AND RELAX AREAS
-
- 10 MINUTES TO THE BEACHES OF THE COSTA CÁLIDA
 - 1.300 PROPERTIES
 - 24 HOURS SECURITY
 - EXCLUSIVE USE OF OWNERS
 - COMMERCIAL SHOPPING AREA OF 35.000 M2
 - RANGE OF EXCLUSIVE VILLAS
 - RANGE OF SUPERB APARTMENTS



TINDRA HOMES EL LAGO APARTMENTS

www.santarosalialifestyle.com



Santa Rosalia
Lake and Life Resort

PREMIUM
Spain
PROPERTIES



TINDRA HOMES EL LAGO



From 254.000 €

**LIFESTYLE AND INVESTMENT
FULL MANAGEMENT SERVICE
GOLDEN VISA INVESTMENTS**

**PREMIUM SPAIN PROPERTIES
WILL TAKE CARE OF
EVERYTHING FOR YOU!**

- Luxury Designs
- 2 & 3 Bedrooms
- 2 Bathrooms
- Private Underground Parking
- Storage Rooms in Basements
- Communal Pool
- Communal Gardens
- Air Conditioning Pre Instalation
- LED Lighting
- Kitchen White Goods



**PROPERTY SALES
FULL PROPERTY MANAGEMENT
RENTALS SERVICES
KEY HOLDING
CLEANING SERVICES
FURNITURE PACKAGES**

**PREMIUM SPAIN PROPERTIES TAKES
CARE OF EVERYTHING FOR YOU!**



www.santarosalialifestyle.com



PRICES

FORM OF PAYMENT

RESERVATION - 6.000 €
SIGNING OF CONTRACT 25% APPROX 3 MONTHS
APPROX 4 MONTHS LATER 25%
REST ON COMPLETION

| BLOCK 1 | PROPERTY | BEDS | BATHS | TERRACE | GARDEN | PRICE |
|---------------|----------|------|-------|----------|--------|------------------|
| GFA | 96 m2 | 2 | 2 | 19,22 m2 | 105 m2 | 290,000 € |
| GFB | 89 m2 | 2 | 2 | 16,66 m2 | 73 m2 | 268,000 € |
| GFC | 89 m2 | 2 | 2 | 16.66 m2 | 75 m2 | 268,000 € |
| GFD | 96 m2 | 2 | 2 | 19,22 m2 | 112 m2 | SHOWHOUSE |
| 1°A | 111 m2 | 3 | 2 | 19,45 m2 | | 299,000 € |
| 1°B | 88 m2 | 2 | 2 | 17.14 m2 | | 254,000 € |
| 1°C | 88 m2 | 2 | 2 | 17.14 m2 | | RESERVED |
| 1°D | 111 m2 | 3 | 2 | 19,45 m2 | | 299,000 € |
| 2°A | 106 m2 | 3 | 2 | 19,45 m2 | | 325,000 € |
| 2°B | 84 m2 | 2 | 2 | 17,14 m2 | | 275,000 € |
| 2°C | 84 m2 | 2 | 2 | 17,14 m2 | | 275,000 € |
| 2°D | 106 m2 | 3 | 2 | 19,45 m2 | | 325,000 € |
| PENT A | 109 m2 | 3 | 2 | 77,62 m2 | | 550,000 € |
| PENT B | 109 m2 | 3 | 2 | 77,62 m2 | | 550,000 € |

PRICES SUBJECT TO PURCHASE TAX AND LEGAL FEES APPROX 15%

ALL PAYMENTS COVERED BY BANK GUARANTEES

BLOCK 1



elLago

VIVIENDA

| | |
|-----------|---|
| Escalera: | 1 |
| Nivel: | 0 |
| Letra: | A |

SUPERFICIES

| | |
|-------------------------|-----------------------|
| Construida con comunes: | 96.00 m ² |
| Útil total porches: | 19.22 m ² |
| Útil total jardín: | 104.69 m ² |



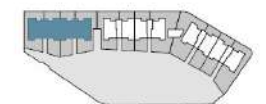
elLago

VIVIENDA

| | |
|-----------|---|
| Escalera: | 1 |
| Nivel: | 0 |
| Letra: | B |

SUPERFICIES

| | |
|-------------------------|----------------------|
| Construida con comunes: | 89.23 m ² |
| Útil total porches: | 14.64 m ² |
| Útil total jardín: | 72.54 m ² |



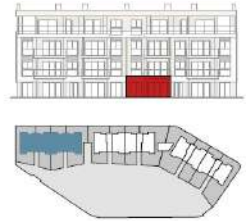
NOTA: La posición representada se encuentra girada 90° con respecto a su posición real.



NOTA: La posición representada se encuentra girada 90° con respecto a su posición real.

| VIVIENDA | |
|-----------|---|
| Escalera: | 2 |
| Nivel: | 0 |
| Letra: | C |

| SUPERFICIES | |
|-------------------------|----------------------|
| Construida con comunes: | 89,23 m ² |
| Útil total porches: | 14,66 m ² |
| Útil total Jardín: | 74,89 m ² |



el Lago



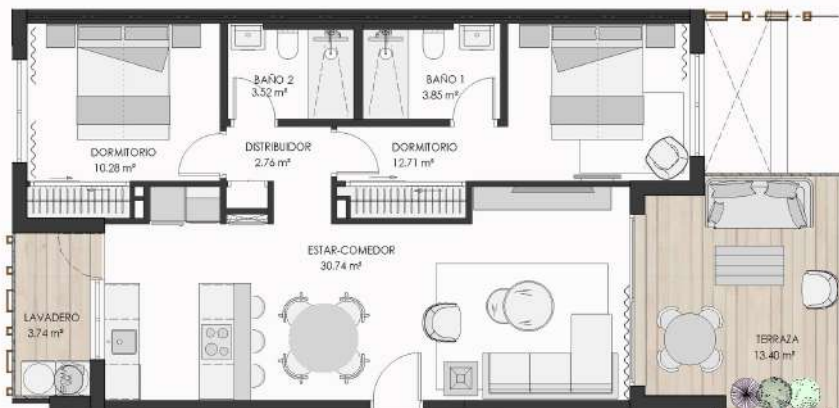
NOTA: La posición representada se encuentra girada 90° con respecto a su posición real.

| VIVIENDA | |
|-----------|---|
| Escalera: | 1 |
| Nivel: | 1 |
| Letra: | A |

| SUPERFICIES | |
|-------------------------|-----------------------|
| Construida con comunes: | 111,49 m ² |
| Útil total terrazas: | 19,45 m ² |

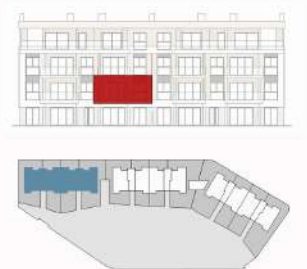


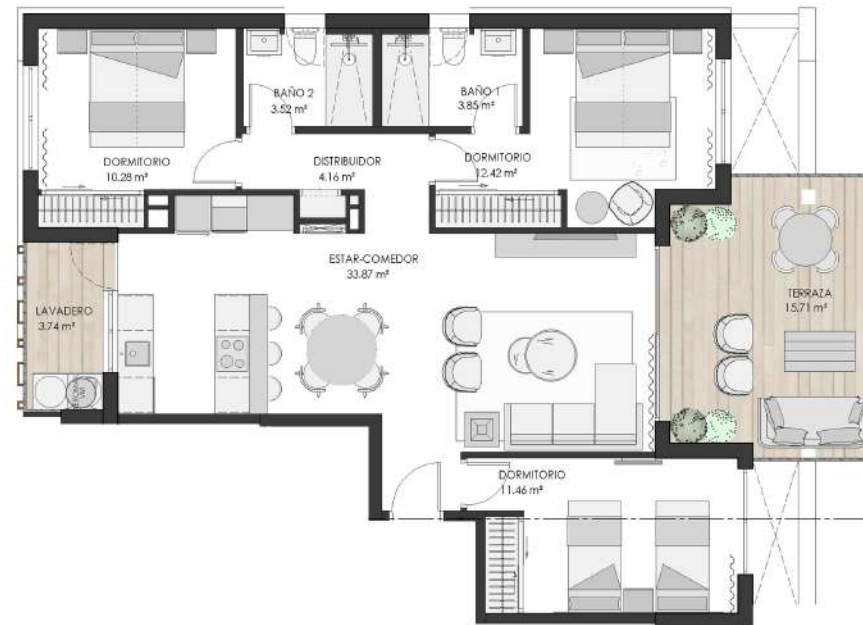
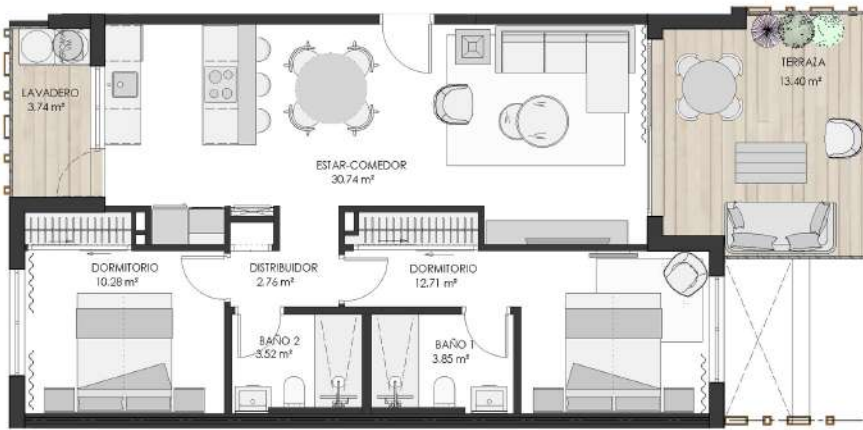
el Lago



| VIVIENDA | |
|-----------|---|
| Escalera: | 1 |
| Nivel: | 1 |
| Letra: | B |

| SUPERFICIES | |
|-------------------------|----------------------|
| Construida con comunes: | 88,62 m ² |
| Útil total terrazas: | 17,14 m ² |



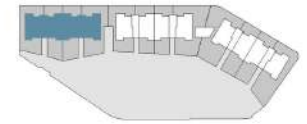


VIVIENDA

| | |
|-----------|---|
| Escalera: | 2 |
| Nivel: | 1 |
| Letra: | C |

SUPERFICIES

| | |
|-------------------------|----------------------|
| Construida con comunes: | 88,62 m ² |
| Útil total terrazas: | 17,14 m ² |

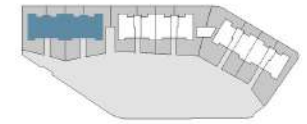


VIVIENDA

| | |
|-----------|---|
| Escalera: | 2 |
| Nivel: | 1 |
| Letra: | D |

SUPERFICIES

| | |
|-------------------------|-----------------------|
| Construida con comunes: | 111,49 m ² |
| Útil total terrazas: | 19,45 m ² |

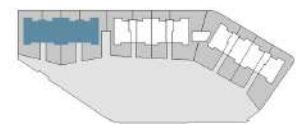


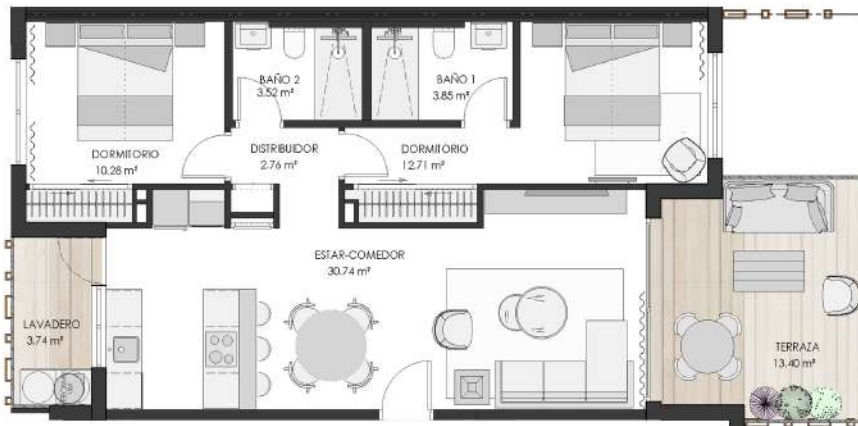
VIVIENDA

| | |
|-----------|---|
| Escalera: | 1 |
| Nivel: | 2 |
| Letra: | A |

SUPERFICIES

| | |
|-------------------------|-----------------------|
| Construida con comunes: | 106,26 m ² |
| Útil total terrazas: | 19,45 m ² |





VIVIENDA

| | |
|-----------|---|
| Escalera: | 1 |
| Nivel: | 2 |
| Letra: | B |

SUPERFICIES

| | |
|-------------------------|----------------------|
| Construida con comunes: | 84,04 m ² |
| Útil total terrazas: | 17,14 m ² |

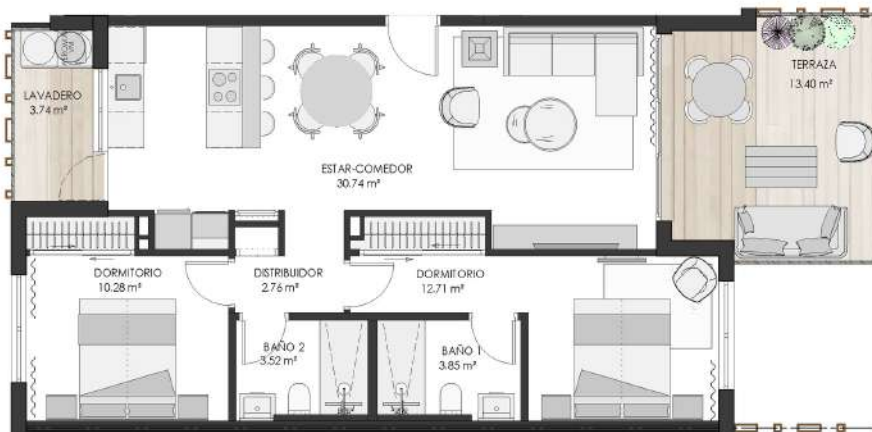
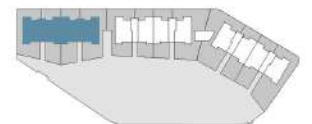


VIVIENDA

| | |
|-----------|---|
| Escalera: | 2 |
| Nivel: | 2 |
| Letra: | C |

SUPERFICIES

| | |
|-------------------------|----------------------|
| Construida con comunes: | 84,04 m ² |
| Útil total terrazas: | 17,14 m ² |



VIVIENDA

| | |
|-----------|---|
| Escalera: | 2 |
| Nivel: | 2 |
| Letra: | D |

SUPERFICIES

| | |
|-------------------------|-----------------------|
| Construida con comunes: | 106,26 m ² |
| Útil total terrazas: | 19,45 m ² |





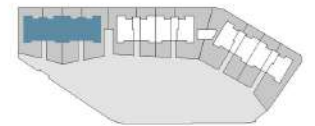
el Lago

VIVIENDA

| | |
|-----------|---|
| Escalera: | 1 |
| Nivel: | 3 |
| Letra: | A |

SUPERFICIES

| | |
|-------------------------|-----------------------|
| Construida con comunes: | 109,35 m ² |
| Útil total terrazas: | 77,62 m ² |



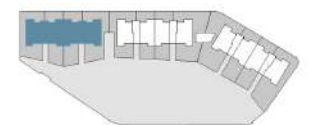
el Lago

VIVIENDA

| | |
|-----------|---|
| Escalera: | 2 |
| Nivel: | 3 |
| Letra: | C |

SUPERFICIES

| | |
|-------------------------|-----------------------|
| Construida con comunes: | 109,35 m ² |
| Útil total terrazas: | 77,62 m ² |





Santa Rosalía
lake and life resort

AUTHORISED AGENT

PREMIUM
Spain
PROPERTIES



Luxury
LIFESTYLE
AWARDS
WINNER
2022
BEST LUXURY RESIDENTIAL
DEVELOPMENT
MURCIA, SPAIN



Premium Spain Properties are dedicated specialists to Santa Rosalía Lake and Life Resort, having been able to envisage the development of this luxury and breath-taking Crystal Blue Lagoon Resort from the beginning, we are preferred agents for the promoters and can offer you unmatched services and opportunities within this amazing resort.

Contact us:

info@premiumspainproperties.com

www.santarosalialifestyle.com

Tel: (0034) 600 665 392

