

57 Forastero House, 24 Farine Avenue, Hayes, UB3 4GE  
£1,550 Per month  
Council Tax Band: C

H&H  
BESPOKE



Welcome to this charming apartment located at 24 Farine Avenue in Hayes. This delightful property offers a comfortable living space, perfect for individuals or couples seeking a cosy home.

The apartment features a well-appointed reception room, providing an inviting area for relaxation and entertaining guests. The single bedroom is designed to be a peaceful retreat, ensuring a restful night's sleep. The bathroom is conveniently located, offering all the necessary amenities for your daily routines.

Although the property is compact, it is thoughtfully designed to maximise space and functionality. The location in Hayes is ideal, with easy access to local amenities, transport links, and green spaces, making it a convenient choice for modern living.

This apartment presents an excellent opportunity for those looking to enter the property market or for anyone seeking a low-maintenance living option. With its appealing features and prime location, this

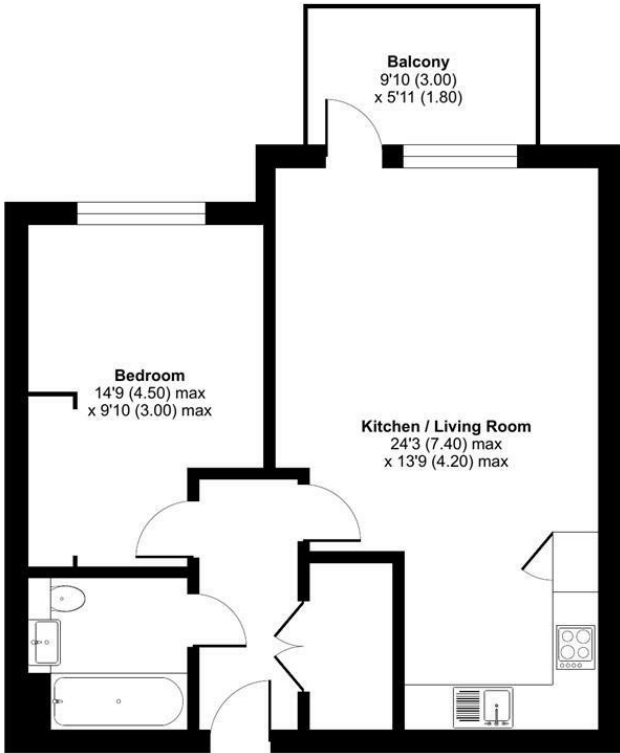


13 Sherrard Street, Melton Mowbray, Leicestershire, LE13 1XH  
0333 242 3760  
Beth@houseandhomebespoke.co.uk



**Farine Avenue, Hayes, UB3**

Approximate Area = 571 sq ft / 53 sq m  
For identification only - Not to scale



FOURTH FLOOR

Floor plan produced in accordance with RICS Property Measurement 2nd Edition, Incorporating International Property Measurement Standards (IPMS2 Residential). ©rithecom 2025. Produced for House and Home Bespoke. REF: 1387435

Energy Efficiency Rating		
	Current	Potential
Very energy efficient - lower running costs		
(92 plus) <b>A</b>		
(81-91) <b>B</b>	85	85
(69-80) <b>C</b>		
(55-68) <b>D</b>		
(39-54) <b>E</b>		
(21-38) <b>F</b>		
(1-20) <b>G</b>		
Not energy efficient - higher running costs		
England & Wales		
EU Directive 2002/91/EC		