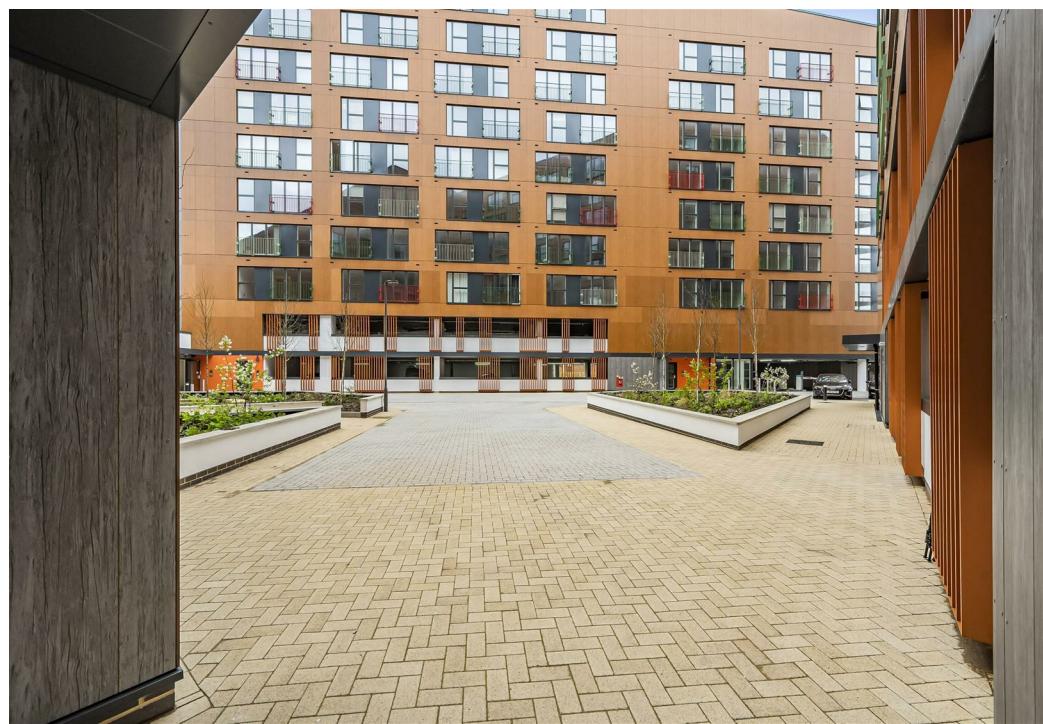
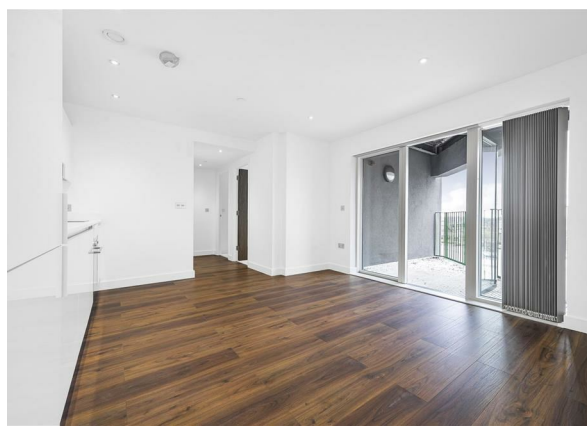


185 The Grand Exchange Market Street, Bracknell, RG12 1EY
£1,500
Council Tax Band: C

H&H
BESPOKE



Welcome to The Grand Exchange,Market Street, Bracknell - a location that offers the perfect blend of convenience and comfort. This stunning new build apartment boasts a modern design with 1 reception room, 2 bedrooms, and 2 bathrooms, providing ample space for a comfortable lifestyle.

Situated in the heart of Bracknell, this property is ideal for those seeking a vibrant urban lifestyle. The apartment is thoughtfully designed to maximise space and light, creating a welcoming atmosphere from the moment you step inside.

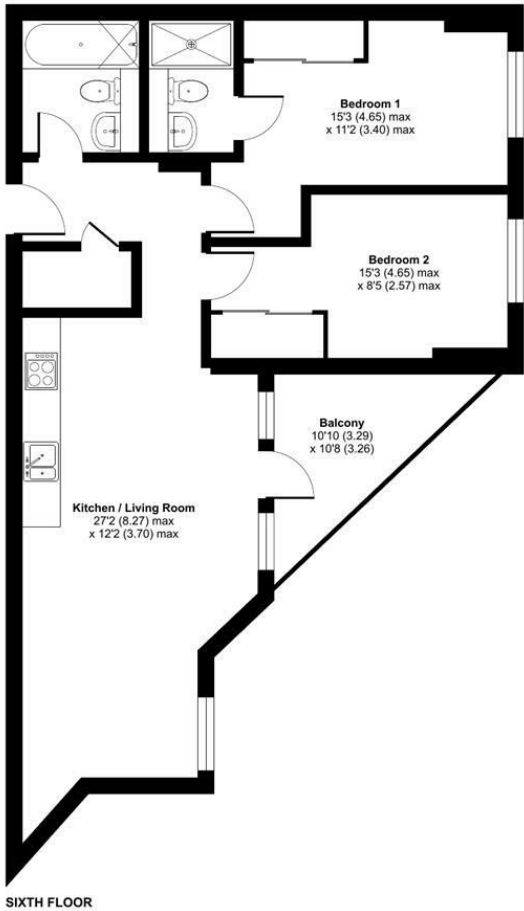
With its contemporary layout and stylish finish, this apartment is perfect for individuals or small families looking for a modern living space. The 2 bathrooms add a touch of luxury, ensuring convenience and comfort for all residents.



13 Sherrard Street, Melton Mowbray, Leicestershire, LE13 1XH
0333 242 3760
Beth@houseandhomebespoke.co.uk

Market Street, Bracknell, RG12

Approximate Area = 677 sq ft / 62.8 sq m
For identification only - Not to scale



Floor plan produced in accordance with RICS Property Measurement Standards incorporating International Property Measurement Standards (IPMS2 Residential). © nchecom 2024. Produced for House and Home Bespoke. REF: 1105668

Energy Efficiency Rating		
	Current	Potential
Very energy efficient - lower running costs		
(92 plus) A		
(81-91) B	85	85
(69-80) C		
(55-68) D		
(39-54) E		
(21-38) F		
(1-20) G		
Not energy efficient - higher running costs		
England & Wales		EU Directive 2002/91/EC