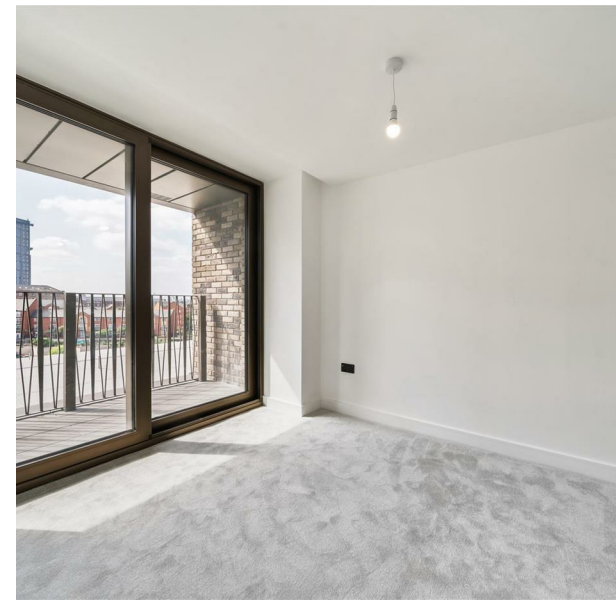


The Lomax, 405 Lomax street, Manchester, M1 2GD  
£1,250 Per month  
Council Tax Band: New Build

H&H  
BESPOKE



Nestled in the vibrant heart of Manchester, this purpose-built apartment on Lomax Street offers a perfect blend of comfort and convenience. Ideal for individuals or couples, the property features a well-appointed bedroom that provides a peaceful retreat after a busy day. The spacious reception room is perfect for relaxation or entertaining guests, creating a welcoming atmosphere that feels like home.

The apartment also boasts a modern bathroom, designed with both style and functionality in mind. With its contemporary fixtures and fittings, it ensures a refreshing start to your day.

Living on Lomax Street places you within easy reach of Manchester's bustling city life, with an array of shops, restaurants, and cultural attractions just a stone's throw away. Public transport links are readily accessible, making commuting a breeze.

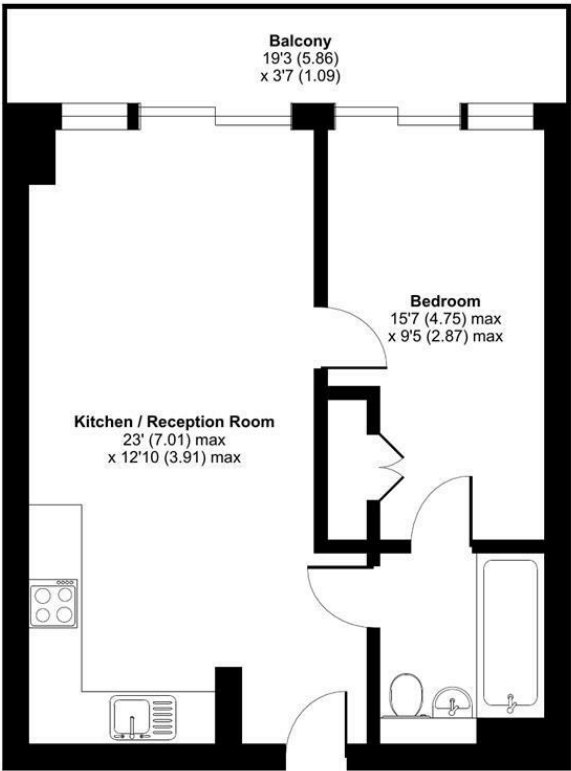
This apartment is an excellent opportunity for those seeking a stylish and convenient living space in one of the UK's most dynamic cities. Whether you are looking to invest or find your next home, this property is



13 Sherrard Street, Melton Mowbray, Leicestershire, LE13 1XH  
0333 242 3760  
Beth@houseandhomebespoke.co.uk

Lomax Street, Manchester, M1

Approximate Area = 456 sq ft / 42.3 sq m  
For identification only - Not to scale



FOURTH FLOOR

Floor plan produced in accordance with RICS Property Measurement 2nd Edition, Incorporating International Property Measurement Standards (IPMS2 Residential). ©rithecom 2025. Produced for House and Home Bespoke. REF: 1298048

Energy Efficiency Rating		
	Current	Potential
Very energy efficient - lower running costs		
(92 plus) A		
(81-91) B	84	84
(69-80) C		
(55-68) D		
(39-54) E		
(21-38) F		
(1-20) G		
Not energy efficient - higher running costs		
England & Wales		EU Directive 2002/91/EC