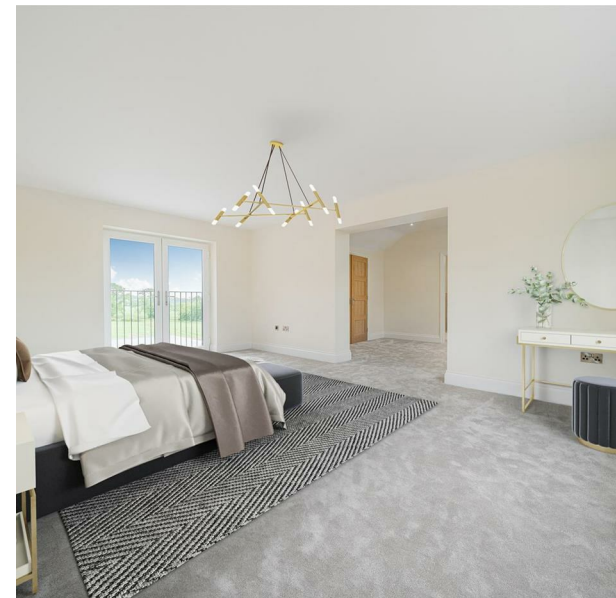


9b, Field Fare Melton Road, Ab Kettleby, Melton Mowbray, LE14 3JA
Offers over £610,000
Council Tax Band: New Build

H&H
BESPOKE



Nestled in the picturesque village of Ab Kettleby, Melton Mowbray, this stunning newly built detached house on Melton Road is a true gem waiting to be discovered.

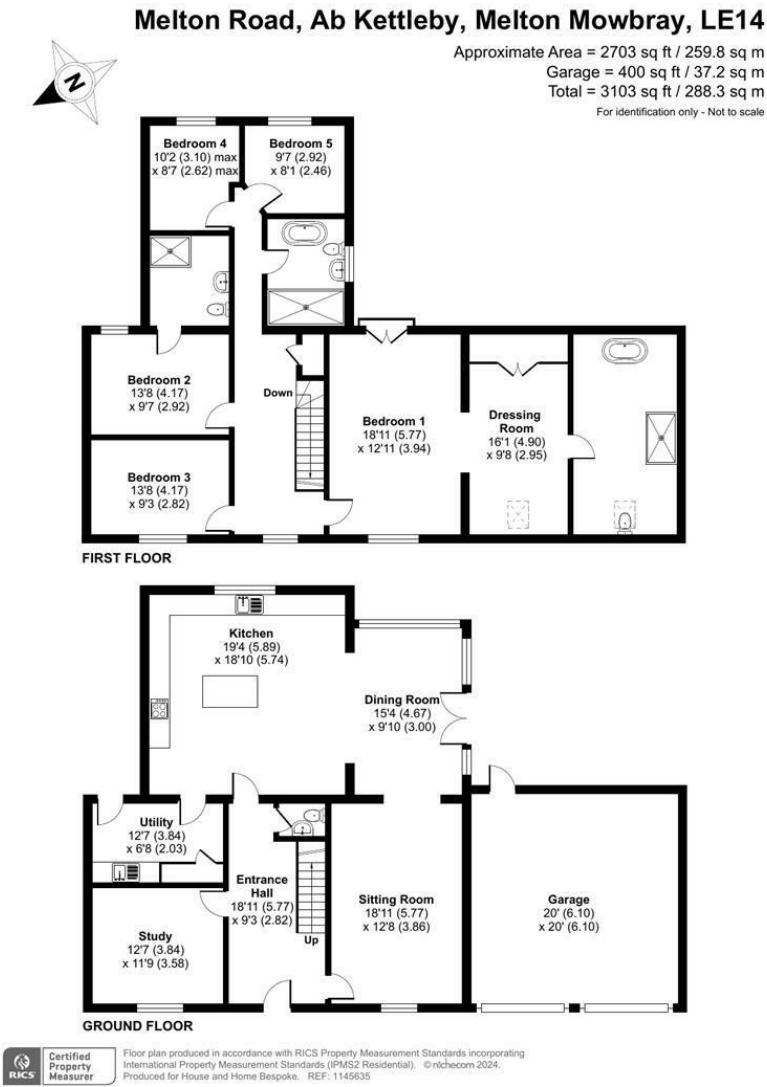
As you step inside, you are greeted by three spacious reception rooms, perfect for entertaining guests or simply relaxing with your loved ones. With five bedrooms and three modern bathrooms, there is ample space for the whole family to enjoy.

This turnkey home spans an impressive 3,103 sq ft of contemporary living space, offering a perfect blend of style and comfort. Built in 2023, it is equipped with underfloor heating, ensuring warmth and cosiness throughout.

One of the highlights of this property is the breathtaking Master Suite, complete with a dressing room and an en-suite bathroom featuring a luxurious bath for you to unwind after a long day. The galleried landing



13 Sherrard Street, Melton Mowbray, Leicestershire, LE13 1XH
0333 242 3760
Beth@houseandhomebespoke.co.uk



| Energy Efficiency Rating | | |
|---|---------|-------------------------|
| | Current | Potential |
| Very energy efficient - lower running costs | | |
| (92 plus) A | | |
| (81-91) B | | |
| (69-80) C | | |
| (55-68) D | | |
| (39-54) E | | |
| (21-38) F | | |
| (1-20) G | | |
| Not energy efficient - higher running costs | | |
| England & Wales | | EU Directive 2002/91/EC |