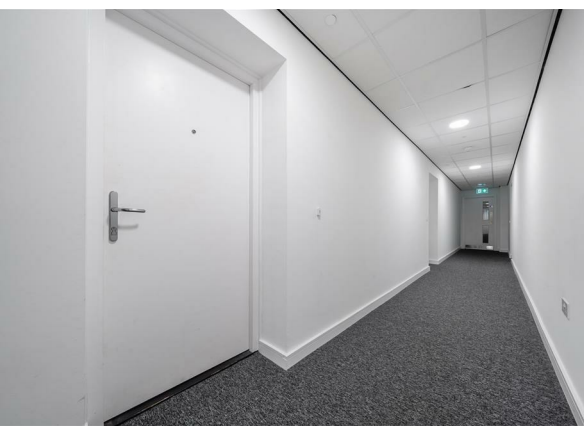
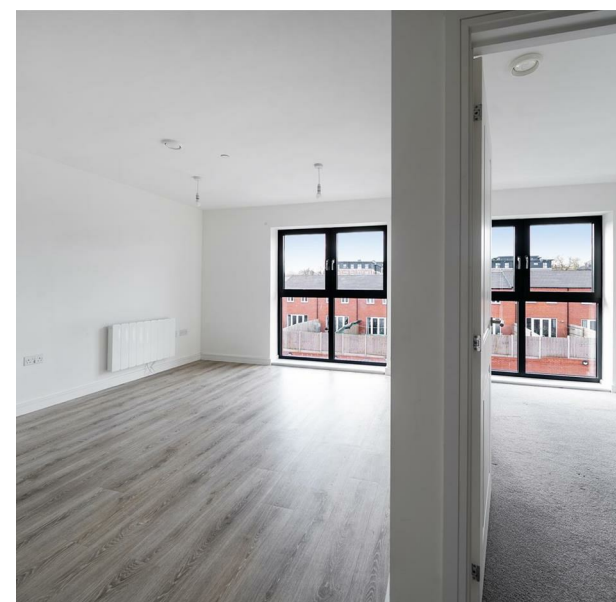
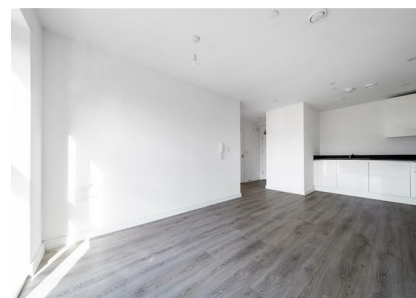


Flat 36, 1, Darwin House Sylvester Close, Derby, DE1 2BG
£800 Per month
Council Tax Band: A

H&H
BESPOKE



50% OFF YOUR FIRST MONTH'S RENT*
ZERO DEPOSIT AVAILABLE ON THIS PLOT*
*T's&Cs Apply

Welcome to Apt 36, Darwin House, located in the charming area of Sylvester Close, Derby. This modern apartment, built in 2023, offers a perfect blend of contemporary living and comfort.

As you enter the property, you will find a well-designed reception room that provides a welcoming space for relaxation and entertainment. The apartment features one spacious bedroom, ideal for a peaceful night's sleep, and a stylish bathroom that caters to your daily needs.



13 Sherrard Street, Melton Mowbray, Leicestershire, LE13 1XH
0333 242 3760
Beth@houseandhomebespoke.co.uk

Sylvester Close, Derby, DE1

Approximate Area = 434 sq ft / 40.3 sq m
For identification only - Not to scale



SECOND FLOOR

Floor plan produced in accordance with RICS Property Measurement 2nd Edition, Incorporating International Property Measurement Standards (IPMS2 Residential). ©rithecom 2025. Produced for House and Home Bespoke. REF: 1257015

Energy Efficiency Rating		
	Current	Potential
Very energy efficient - lower running costs		
(92 plus) A	85	85
(81-91) B		
(69-80) C		
(55-68) D		
(39-54) E		
(21-38) F		
(1-20) G		
Not energy efficient - higher running costs		
England & Wales		EU Directive 2002/91/EC