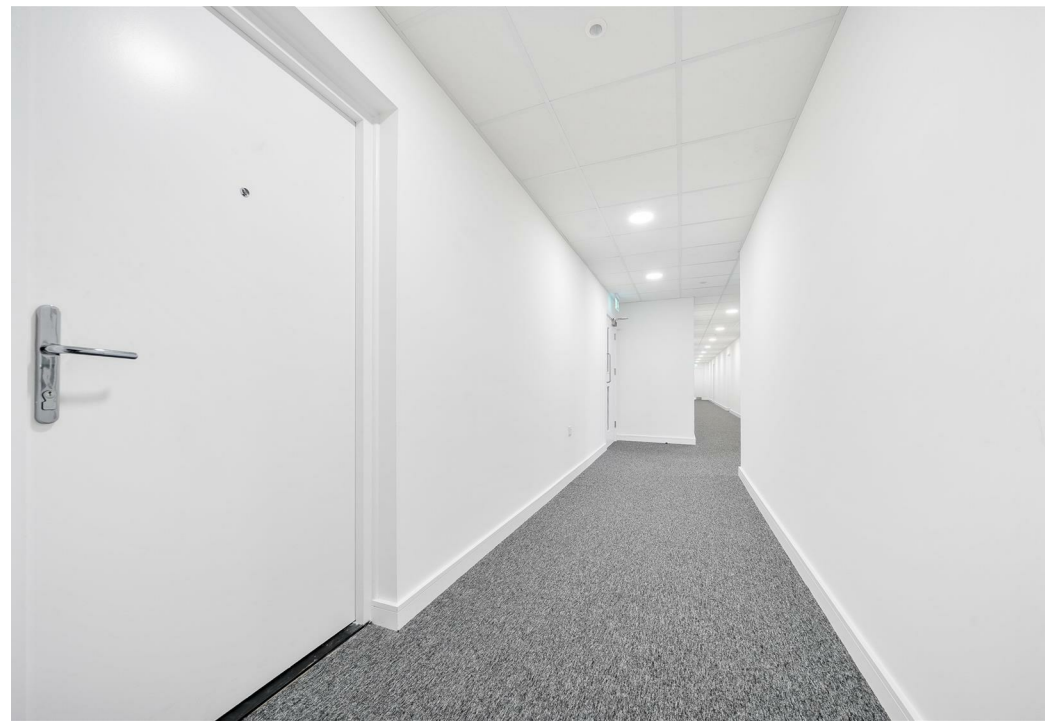
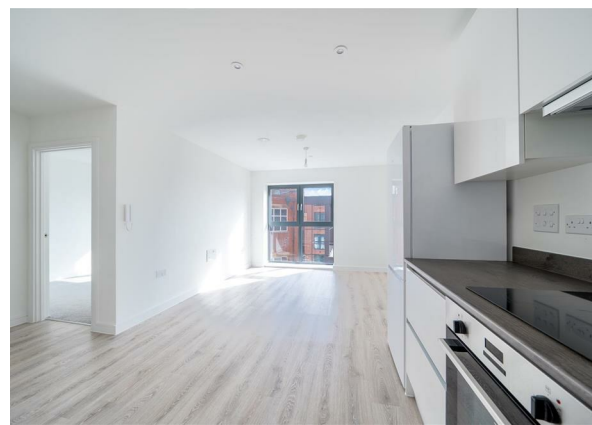
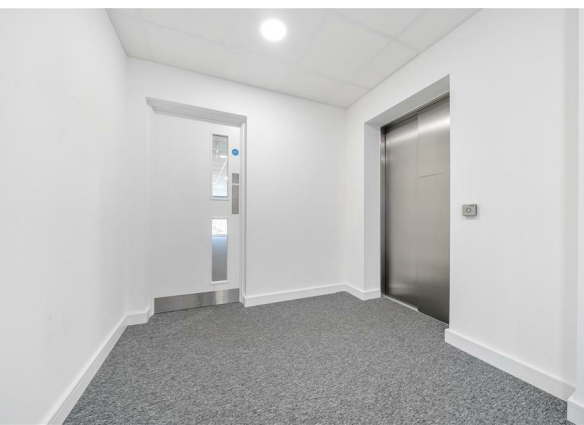
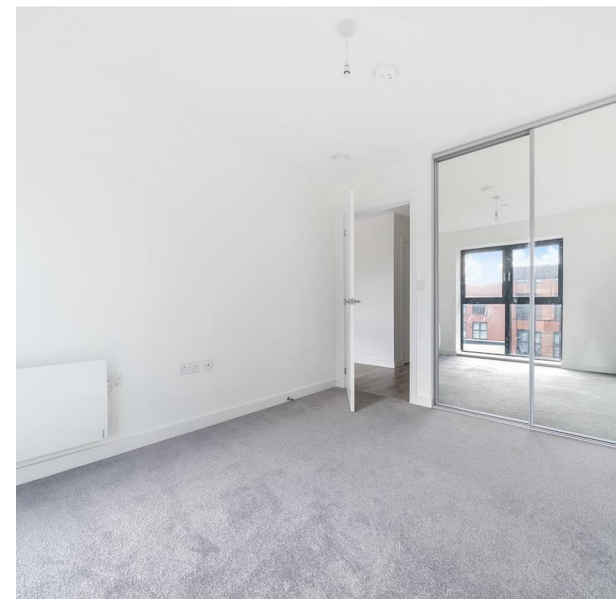
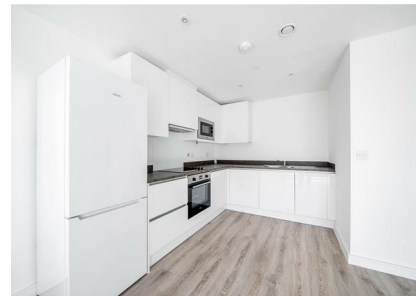


Apartment 37, 5, Dalton House Bilsborrow Avenue, Derby, DE1 2BF
£800
Council Tax Band: A

H&H
BESPOKE



Welcome to Dalton House, a modern apartment located on Bilsborrow Avenue in the vibrant city of Derby. This newly built property, completed in 2023, offers a contemporary living experience that is perfect for individuals or couples seeking a stylish and comfortable home.

The apartment features a well-designed layout, comprising one spacious reception room that serves as an ideal space for relaxation or entertaining guests. The bedroom is thoughtfully sized, providing a peaceful retreat at the end of the day. Additionally, the property includes a modern bathroom, equipped with all the necessary amenities for your convenience.

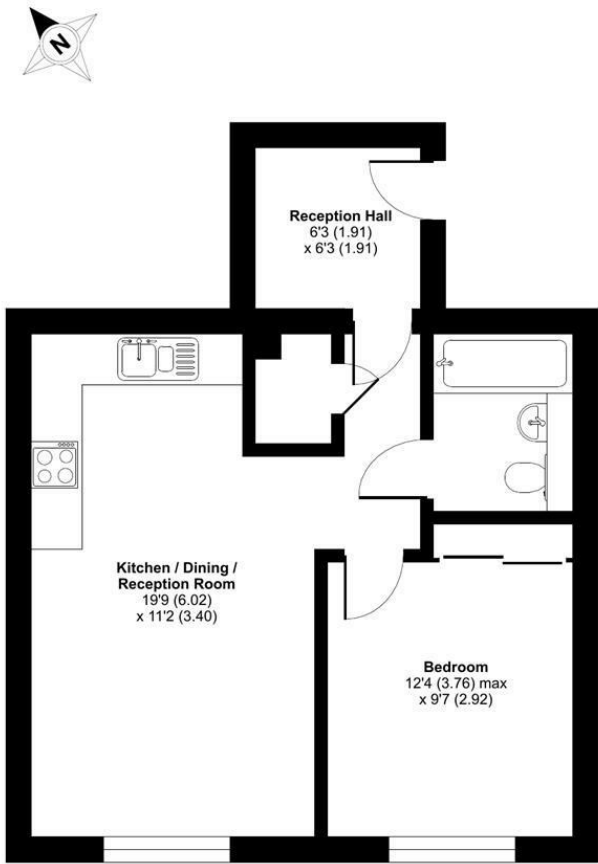
Dalton House is situated in a desirable area, offering easy access to local shops, restaurants, and public transport links, making it an excellent choice for those who appreciate both comfort and convenience. The modern design and high-quality finishes throughout the apartment ensure a pleasant living environment, while the building itself reflects a commitment to contemporary architecture.



13 Sherrard Street, Melton Mowbray, Leicestershire, LE13 1XH
0333 242 3760
Beth@houseandhomebespoke.co.uk

Bilsborrow Avenue, DE1

Approximate Area = 470 sq ft / 43.7 sq m
For identification only - Not to scale



GROUND FLOOR

Floor plan produced in accordance with RICS Property Measurement 2nd Edition, Incorporating International Property Measurement Standards (IPMS2 Residential). ©rithecom 2025. Produced for House and Home Bespoke. REF: 1257012

Energy Efficiency Rating		
	Current	Potential
Very energy efficient - lower running costs		
(92 plus) A	84	84
(81-91) B		
(69-80) C		
(55-68) D		
(39-54) E		
(21-38) F		
(1-20) G		
Not energy efficient - higher running costs		
England & Wales		
EU Directive 2002/91/EC		