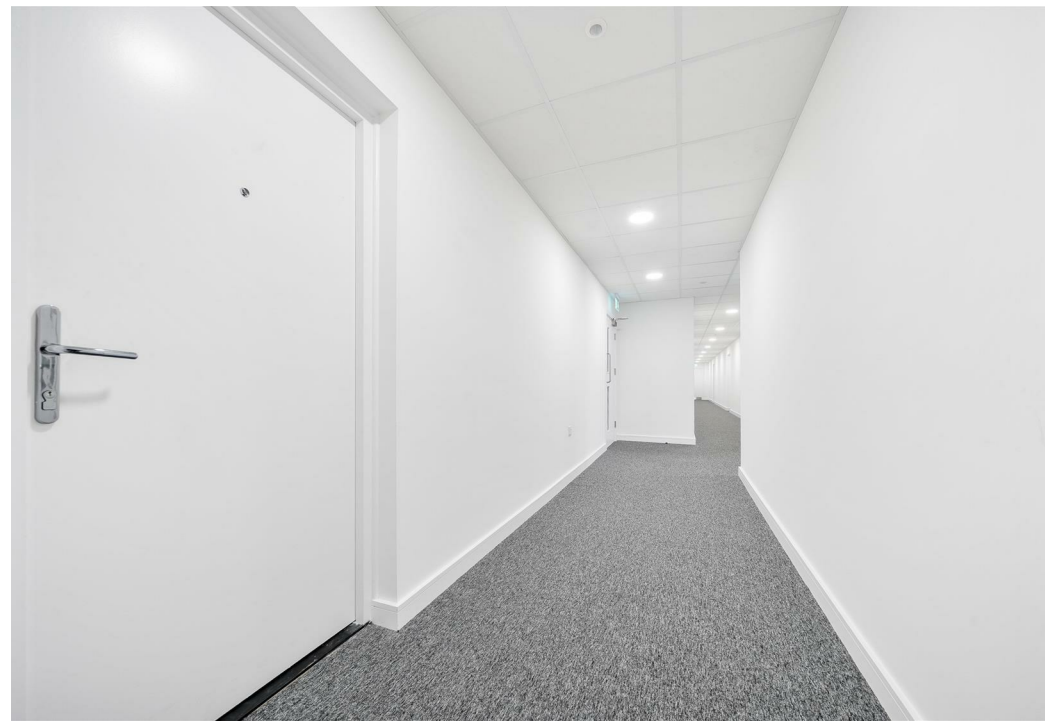
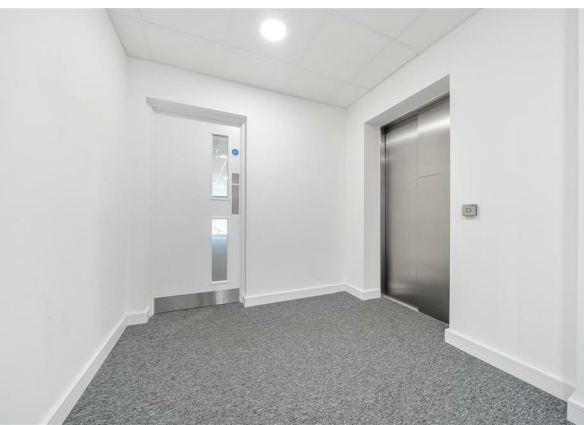
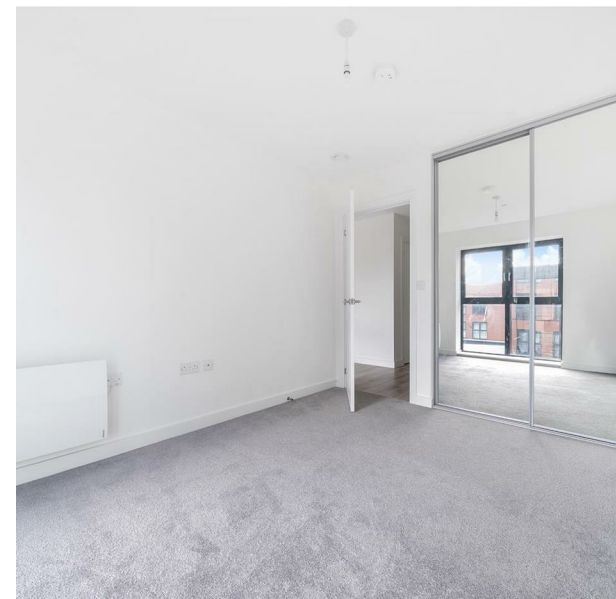
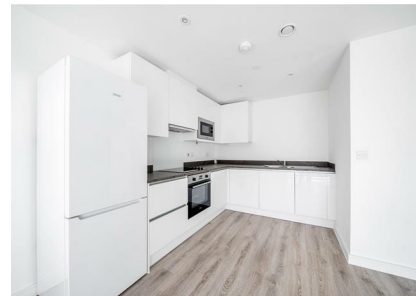


Apartment 37, 5, Dalton House Bilsborrow Avenue, Derby, DE1 2BF
£800
Council Tax Band: A

H&H
BESPOKE



50% OFF YOUR FIRST MONTH'S RENT*
ZERO DEPOSIT AVAILABLE ON THIS PLOT*
*T's&Cs Apply

Welcome to Dalton House, a modern apartment located on Bilsborrow Avenue in the vibrant city of Derby. This newly built property, completed in 2023, offers a contemporary living experience that is perfect for individuals or couples seeking a stylish and comfortable home.

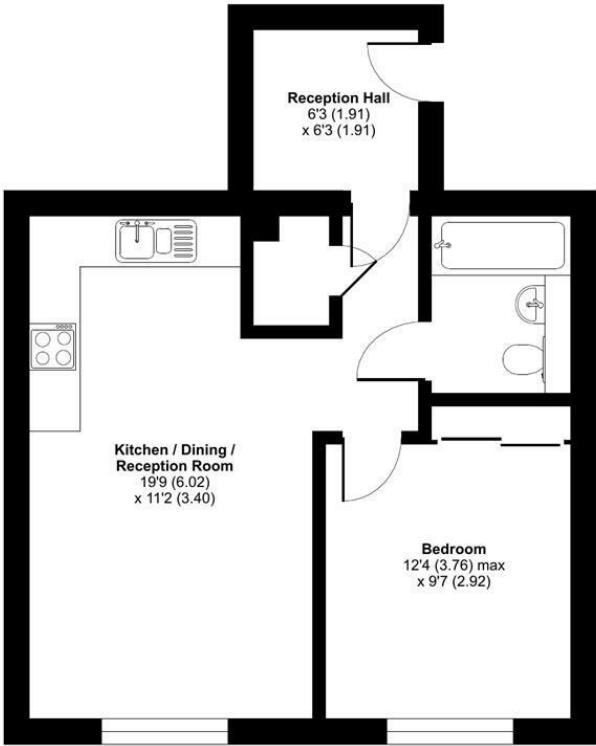
The apartment features a well-designed layout, comprising one spacious reception room that serves as an ideal space for relaxation or entertaining guests. The bedroom is thoughtfully sized, providing a peaceful retreat at the end of the day. Additionally, the property includes a modern bathroom, equipped with all the necessary amenities for your convenience.



13 Sherrard Street, Melton Mowbray, Leicestershire, LE13 1XH
0333 242 3760
Beth@houseandhomebespoke.co.uk

Bilsborrow Avenue, DE1

Approximate Area = 470 sq ft / 43.7 sq m
For identification only - Not to scale



GROUND FLOOR

Floor plan produced in accordance with RICS Property Measurement 2nd Edition, Incorporating International Property Measurement Standards (IPMS2 Residential). ©rithecom 2025. Produced for House and Home Bespoke. REF: 1257012

Energy Efficiency Rating		
	Current	Potential
Very energy efficient - lower running costs		
(92 plus) A		
(81-91) B	84	84
(69-80) C		
(55-68) D		
(39-54) E		
(21-38) F		
(1-20) G		
Not energy efficient - higher running costs		
England & Wales		EU Directive 2002/91/EC