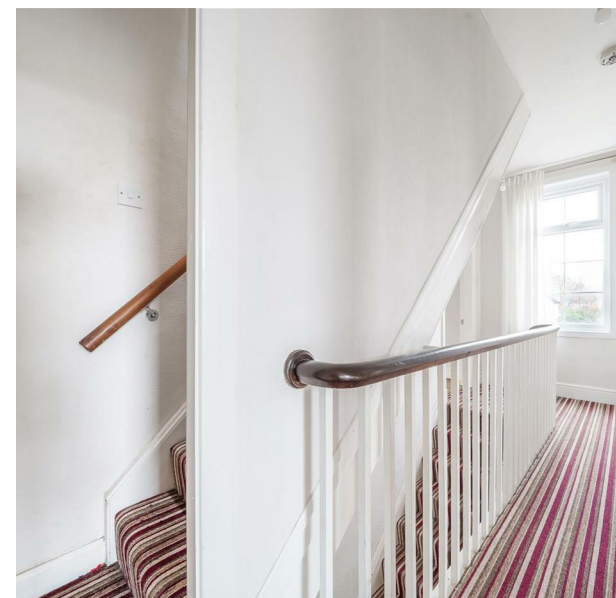


35 Milford Road, Duffield, DE56 4EL  
Offers in the region of £310,000  
Council Tax Band: C

H&H  
BESPOKE



NEW PRICE!!

OPEN HOUSE VIEWING EVENT SUNDAY 27TH APRIL 11-12NOON.

Nestled on the charming Milford Road in Duffield, this delightful house offers a perfect blend of comfort and convenience. The property boasts two inviting reception rooms, ideal for both relaxation and entertaining guests. The well-proportioned layout includes three spacious bedrooms, providing ample space for family living or accommodating visitors.

The main bathroom is thoughtfully designed, ensuring functionality while maintaining a warm and welcoming atmosphere. One of the standout features of this property is the generous parking space, which comfortably accommodates up to three vehicles, a rare find in such a desirable location.



13 Sherrard Street, Melton Mowbray, Leicestershire, LE13 1XH  
0333 242 3760  
Beth@houseandhomebespoke.co.uk

