

33 Milford Road, Duffield, DE56 4EL

£290,000

Council Tax Band: C

H&H
BESPOKE



OPEN HOUSE EVENT
SATURDAY 11TH JANUARY 10.30AM - 11.30AM

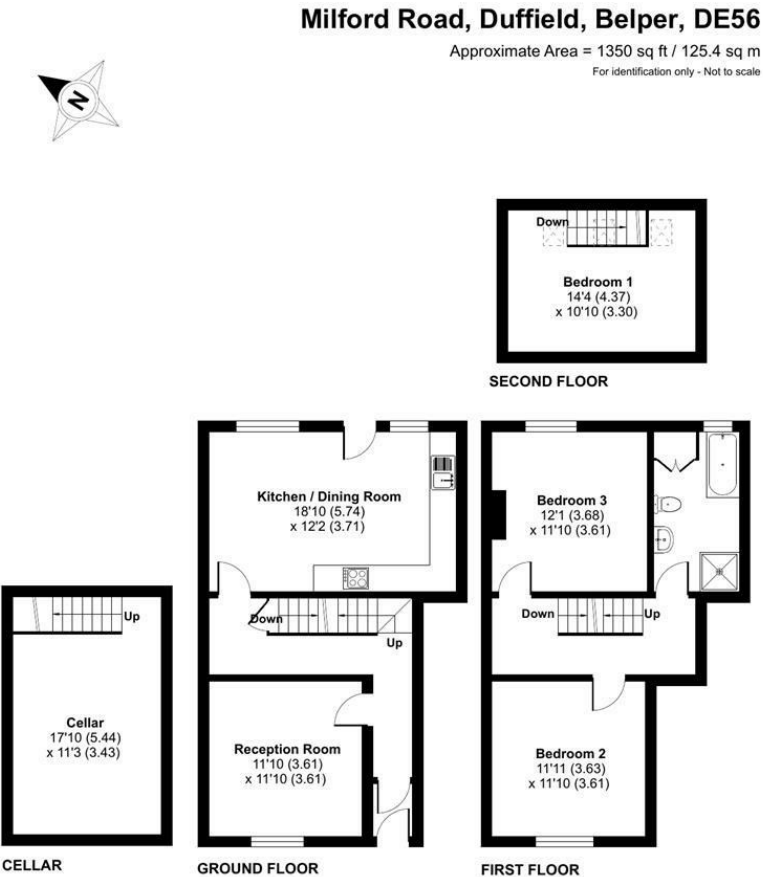
NO APPOINTMENT NEEDED.

Welcome to this charming mid-terrace house located on Milford Road in the picturesque village of Duffield. This property boasts a spacious 1,195 sq ft of living space, perfect for a growing family or those who love to entertain.

As you step inside, you are greeted by a cosy reception room, ideal for relaxing with a cup of tea or hosting guests. With three inviting bedrooms, there is plenty of space for the whole family to unwind and make



13 Sherrard Street, Melton Mowbray, Leicestershire, LE13 1XH
0333 242 3760
Beth@houseandhomebespoke.co.uk



Energy Efficiency Rating		Current	Potential
Very energy efficient - lower running costs			
92 plus A			81
81-91 B			
69-80 C			
55-68 D		56	
39-54 E			
21-38 F			
1-20 G			
Not energy efficient - higher running costs			
England & Wales		EU Directive 2002/91/EC	