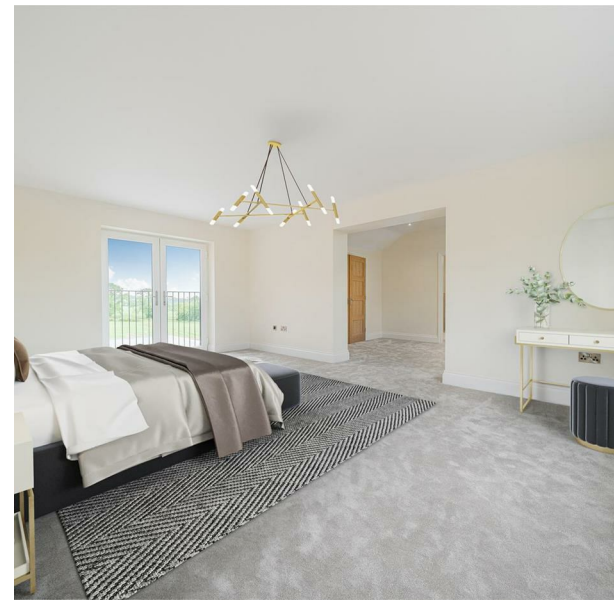


Field Fare Melton Road, Ab Kettleby, Melton Mowbray, LE14 3JA
Offers in excess of £750,000
Council Tax Band: New Build

H&H
BESPOKE



WE ARE EXCITED TO INVITE YOU TO THE LAUNCH EVENT ON FRIDAY 5TH JULY, 4.30PM-6.30PM (NO APPOINTMENT NECESSARY)

Nestled in the picturesque village of Ab Kettleby, Melton Mowbray, this stunning newly built detached house on Melton Road is a true gem waiting to be discovered.

As you step inside, you are greeted by three spacious reception rooms, perfect for entertaining guests or simply relaxing with your loved ones. With five bedrooms and three modern bathrooms, there is ample space for the whole family to enjoy.

This turnkey home spans an impressive 3,103 sq ft of contemporary living space, offering a perfect blend of style and comfort. Built in 2023, it is equipped with underfloor heating, ensuring warmth and cosiness throughout.



12 Digby Drive, Melton Mowbray, Leicestershire, LE13 0RQ
0333 242 3760
Beth@houseandhomebespoke.co.uk

Energy Efficiency Rating		
	Current	Potential
<i>Very energy efficient - lower running costs</i>		
(92 plus) A		
(81-91) B		
(69-80) C		
(55-68) D		
(39-54) E		
(21-38) F		
(1-20) G		
<i>Not energy efficient - higher running costs</i>		
England & Wales	EU Directive 2002/91/EC	