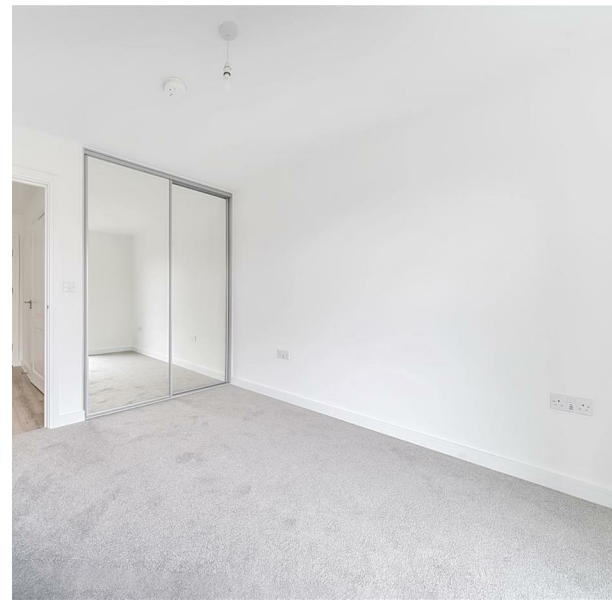


15 Dalton House, Derby, Derbyshire, DE1 2BF

£875

Council Tax Band: New Build

H&H  
BESPOKE



This stunning new build apartment offers a perfect blend of modern living and convenience. With one spacious bedroom, a stylish bathroom, and a welcoming reception room, this property is ideal for those seeking a comfortable and contemporary home.

Located in the heart of Derby, this apartment is perfect for individuals or couples looking to enjoy city living at its finest. The sleek design and attention to detail make this property a true gem in the bustling city.

Whether you're relaxing in the cosy reception room, preparing a meal in the modern kitchen, or unwinding in the well-appointed bedroom, this apartment offers a peaceful retreat from the hustle and bustle of everyday life.

With its convenient location, modern amenities, and stylish design, Dalton House is the perfect place to call home. Don't miss out on the opportunity to make this beautiful apartment your own!

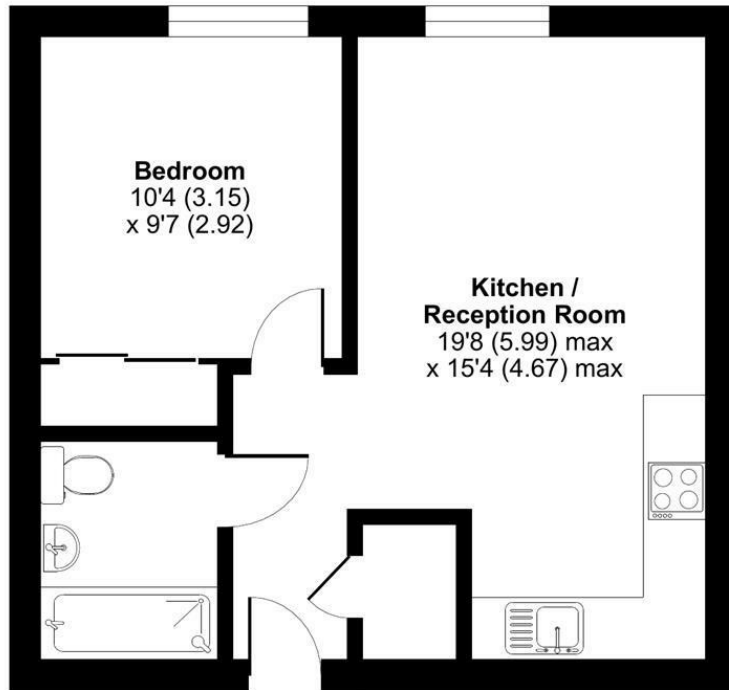


12 Digby Drive, Melton Mowbray, Leicestershire, LE13 0RQ  
0333 242 3760  
Beth@houseandhomebespoke.co.uk

### Bilsborrow Avenue, Derby, DE1

Approximate Area = 426 sq ft / 39.5 sq m

For identification only - Not to scale



**FOURTH FLOOR**

Floor plan produced in accordance with RICS Property Measurement Standards incorporating International Property Measurement Standards (IPMS2 Residential). © rchecom 2024. Produced for House and Home Bespoke. REF: 1083224

Energy Efficiency Rating		Current	Potential
Very energy efficient - lower running costs			
(92 plus) <b>A</b>			
(81-91) <b>B</b>		<b>81</b>	<b>81</b>
(69-80) <b>C</b>			
(55-68) <b>D</b>			
(39-54) <b>E</b>			
(21-38) <b>F</b>			
(1-20) <b>G</b>			
Not energy efficient - higher running costs			
<b>England &amp; Wales</b>		EU Directive 2002/91/EC	