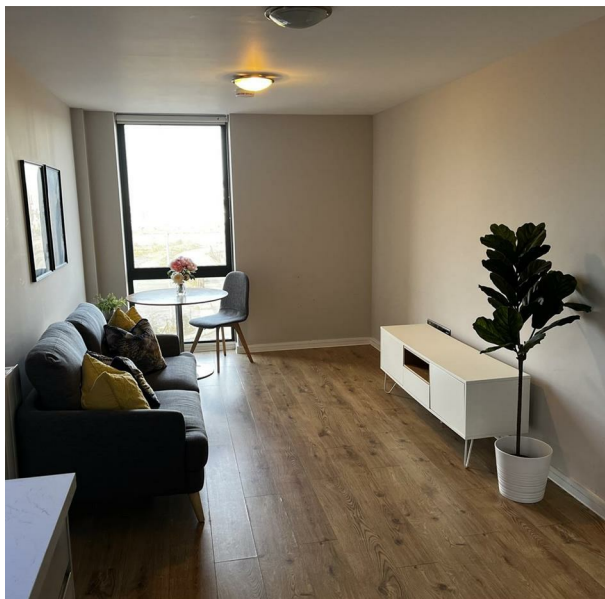


Apartment 402 Quay Central 9 Jesse Hartley Way, Liverpool, L3 0AD

£120,000

Council Tax Band: B



Welcome to this charming property located on Jesse Hartley Way in the vibrant city of Liverpool. This delightful apartment boasts a delightful living, kitchen which is, perfect for relaxing or entertaining guests. With one bedroom, this property is ideal for a single person or a couple looking for a comfortable living space.

The apartment features a modern shower room, providing convenience and style. This property offers contemporary living with all the comforts of a new home. With a total of 452sq ft, there is ample space to make this house your own.

Situated in a prime location, this property offers easy access to all the amenities and attractions that Liverpool has to offer. Whether you enjoy shopping, dining, or exploring the city's rich history, this apartment is the perfect base for you.

Don't miss out on the opportunity to own this lovely property on Jesse Hartley Way offered with no upwards chain. Book a viewing today and envision yourself living in this wonderful home in the heart of Liverpool.



12 Digby Drive, Melton Mowbray, Leicestershire, LE13 0RQ
0333 242 3760
Beth@houseandhomebespoke.co.uk

