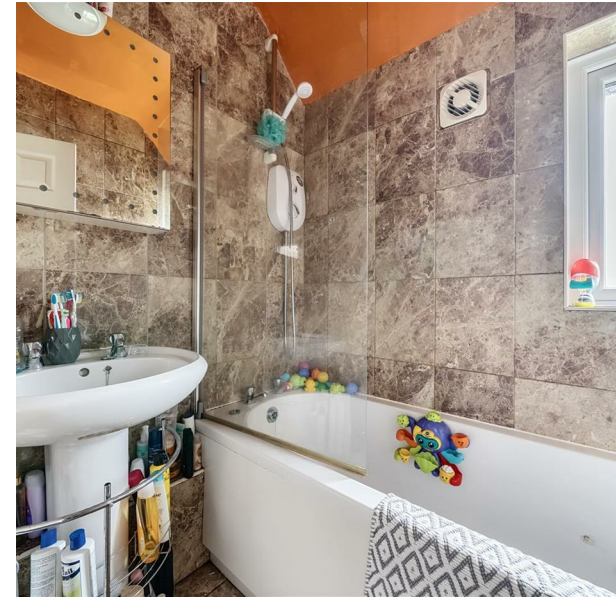


1 Boythorpe Rise, Chesterfield, S40 2QL  
Asking price £155,000  
Council Tax Band: A

H&H  
BESPOKE



NO CHAIN! Would make a great investment or family home.

Make your move this Spring into this super four bedroom semi detached home situated in a cul de sac position.

The accommodation comprises of Entrance lobby, dining room, kitchen, ground floor wet room and lounge. The first floor offers four bedrooms and a bathroom with separate toilet. The outside of the property offers great outside space with a garden which wraps around the property on three sides and is a blank canvas for those garden lovers with this in mind there is also great off road parking with potential to develop this further. (Make sure you check out the floor plan.)

This home is offered with no Upwards chain and viewing is highly recommended.



12 Digby Drive, Melton Mowbray, Leicestershire, LE13 0RQ  
0333 242 3760  
Beth@houseandhomebespoke.co.uk

