

Flat 46 Steel House, The Metalworks Petersfield Avenue, Slough, SL2 5AE

£1,700

Council Tax Band: C

H&H  
BESPOKE



We are delighted to bring to the market this lovely TWO bedroom apartment in the centrally located in Steel House, The Metalworks development.

This second floor, unfurnished apartment in the popular Metalworks development, nearby to Slough town centre and train station.

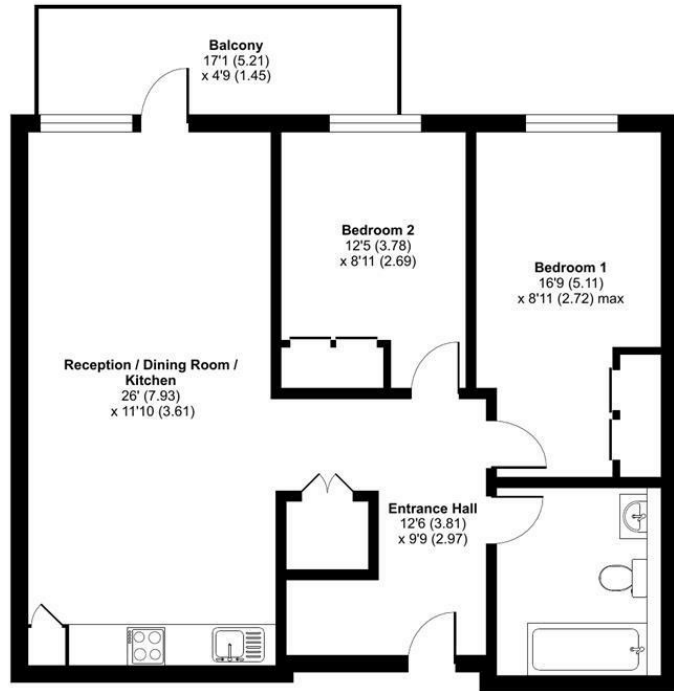
The property comprises of an open plan entry, kitchen and living area having fitted kitchen with integrated white goods including dishwasher, Fridge/ Freezer and washer-dryer. The property is finished to a high standard throughout, and the two double bedrooms have a fitted wardrobe. There is a separate storage cupboard housing water boiler and a well appointed bathroom with shower over bath and heated towel rail.



12 Digby Drive, Melton Mowbray, Leicestershire, LE13 0RQ  
 0333 242 3760  
 Beth@houseandhomebespoke.co.uk

**Petersfield Avenue, SL2**

Approximate Area = 800 sq ft / 74.3 sq m  
 For identification only - Not to scale



SECOND FLOOR

Floor plan produced in accordance with RICS Property Measurement Standards incorporating International Property Measurement Standards (IPMS2 Residential). © rchecom 2024. Produced for House and Home Bespoke. REF: 1102047

Energy Efficiency Rating		Current	Potential
Very energy efficient - lower running costs			
(92 plus) <b>A</b>			
(81-91) <b>B</b>		<b>84</b>	<b>84</b>
(69-80) <b>C</b>			
(55-68) <b>D</b>			
(39-54) <b>E</b>			
(21-38) <b>F</b>			
(1-20) <b>G</b>			
Not energy efficient - higher running costs			
<b>England &amp; Wales</b>		EU Directive 2002/91/EC	