

20 South Street, Derby, DE1 1DS
Asking price £135,000

H&H
BESPOKE



20 South Street, Derby, DE1 1DS

Asking price £135,000

Council Tax Band: A

This super TWO double bedroom terrace home is ready for sale and won't be around for long - it would make an ideal investment or FTB.

The property is situated on the popular 'South' street, perfectly placed for walking into the city and local door step amenities.

In brief the accommodation comprises of lounge, dining room, kitchen, downstairs toilet, and access to the cellar. The first floor offers two double bedrooms - bedroom two having a shower cubical in the bedroom recess and bedroom one having the main bathroom leading off the room - please check out the floor plan.

To the rear of the home there is an enclosed private garden being laid to lawn.

The home is offered with NO UPWARDS CHAIN.



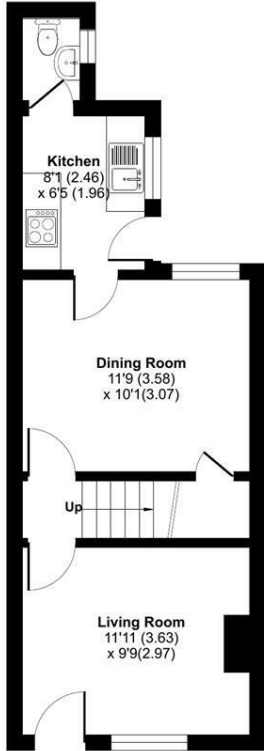




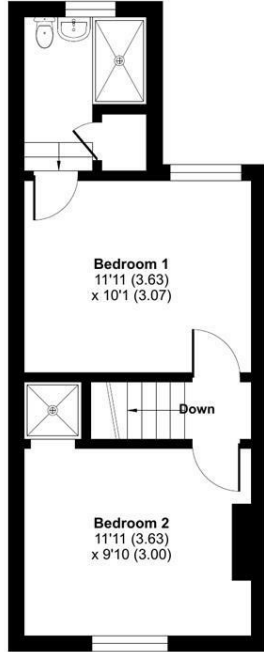


South Street, Derby, DE1

Approximate Area = 696 sq ft / 64.6 sq m
For identification only - Not to scale



GROUND FLOOR



FIRST FLOOR



Floor plan produced in accordance with RICS Property Measurement Standards incorporating International Property Measurement Standards (IPMS2 Residential). © richcom 2023. Produced for The Agency UK. REF: 1024242.

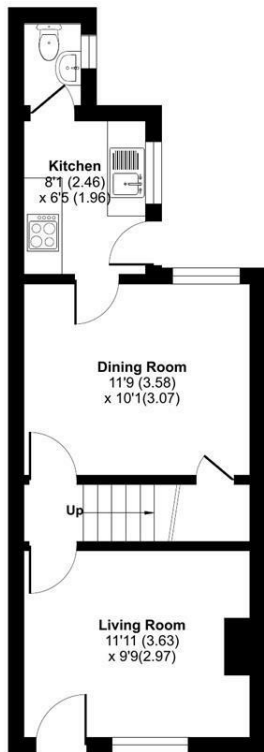


12 Digby Drive
Melton Mowbray
Leicestershire
LE13 0RQ
0333 242 3760
Beth@houseandhomebespoke.co.uk

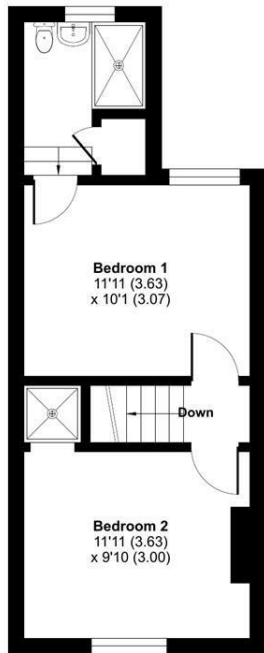


South Street, Derby, DE1

Approximate Area = 696 sq ft / 64.6 sq m
For identification only - Not to scale



GROUND FLOOR



FIRST FLOOR



Floor plan produced in accordance with RICS Property Measurement Standards incorporating International Property Measurement Standards (IPMS2 Residential). © richcom 2023. Produced for The Agency UK. REF: 1024242.

Energy Efficiency Rating		Current	Potential
Very energy efficient - lower running costs			
(92 plus) A			86
(81-91) B			
(69-80) C			
(55-68) D			
(39-54) E		45	
(21-38) F			
(1-20) G			
Not energy efficient - higher running costs			
England & Wales		EU Directive 2002/91/EC	