

**LOCKE**  
THREE/FOUR  
BEDROOM  
HOME

**BLOOR HOMES**



A three/four bedroom detached home with spacious lounge and fantastic open plan kitchen / dining area featuring French doors leading to the rear garden. Upstairs, there are three/four bedrooms with the master and bedroom two benefitting from fitted wardrobes. The master bedroom also features en suite facilities.

**LOCKE**

A STUNNING THREE/FOUR  
BEDROOM DETACHED HOME

**LOCKE  
THREE/ FOUR  
BEDROOM  
HOME**

**FIRST FLOOR:**

**BEDROOM 1**  
2.77m x 3.28m  
9'1" x 10'9"

**EN SUITE**

**BEDROOM 2**  
3.16m x 3.18m  
10'4" x 10'5"

**BEDROOM 3**  
2.37m x 3.19m  
7'9" x 10'5"

**BEDROOM 4**  
2.42m x 2.31m  
7'11" x 7'7"

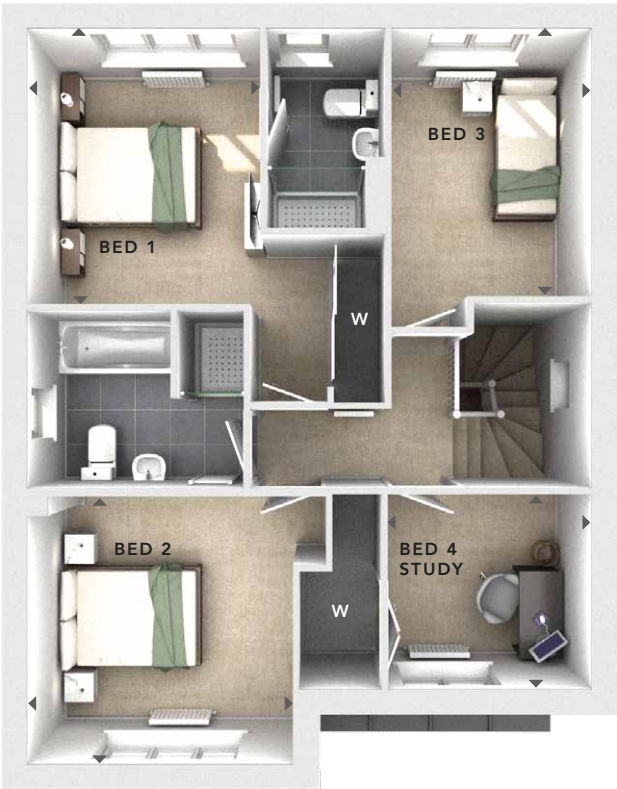
**BATHROOM**

**GROUND FLOOR:**

**LOUNGE**  
3.78m x 4.37m  
12'5" x 14'4"

**KITCHEN / DINING**  
6.71m x 4.25m  
22'0" x 13'11"

**CLOAKS**



FIRST FLOOR



GROUND FLOOR

W	- Fitted Wardrobes
U	- Utility Cupboard
△	- External Access
◀▶	- Measurement Points
486 TUDOR 6.1	

These particulars are intended as a preliminary guide for prospective purchasers and should not be relied upon. The elevational treatment for individual house types shows a typical arrangement. Details of materials and design treatments may vary. Any artist impressions shown are not intended to represent any particular plot. Purchasers are advised to inspect the layout plan to establish the arrangement of the house and surrounding property. Internal layouts show a general arrangement which may vary from plot to plot. Room sizes given are approx. overall finished room sizes and subject to normal building tolerances (i.e. ± 75mm). In all instances purchasers are advised to inspect plot specific information available from our sales team. Nothing in these particulars or verbal assurance shall form or constitute part of any contract, and are given without any responsibility on behalf of Bloor Homes.

