



NIX

B U S I N E S S C E N T R E

2 PARK COURT, PREMIER WAY
ABBEY PARK, ROMSEY
HAMPSHIRE, SO51 9DH



FLEXIBLE
LEASE
TERMS



DEDICATED PHONE
SYSTEMS



FULLY FURNISHED WITH
DESKS & CHAIRS



HIGH SPEED
BROADBAND

**12 OFFICE SUITES AVAILABLE TO LET
FROM 145 - 2,770 SQ FT (14 - 257 SQ M) APPROX.**



WHATS INCLUDED

-  Dedicated telephone system throughout
-  Dedicated 100Mb/s leased line
-  Air conditioning
-  Separate meeting room on each floor with large TV for presentations
-  Separate kitchens on each floor with dishwasher, microwave and kettle
-  Shared toilet facilities with showers
-  Furnished with desks and chairs
-  Cleaning, landscaping and maintenance for all communal areas
-  Car parking included
-  Window cleaning
-  Refuse collection
-  Buildings insurance
-  All utilities including gas, water & electricity
-  Fire safety equipment & servicing
-  CCTV, intercom & alarm system
-  Tea & coffee

LOCATION

Our office building at 2 Park Court, Premier Way, Romsey, is close to Romsey town centre and the local shops. It is easily accessible from the motorway with great transport links nearby. There is even a pub within walking distance!

ACCOMMODATION

GROUND FLOOR

	SQ FT	SQ M
OFFICE 1	230.8	21.5
OFFICE 2	234.3	21.8
OFFICE 3	185.8	17.3
OFFICE 4	385.8	35.8
OFFICE 5	146.4	13.6

FIRST FLOOR

	SQ FT	SQ M
OFFICE 6	280.5	26.1
OFFICE 7	162.4	15.1
OFFICE 8	229.1	21.3
OFFICE 9	204.3	18.9
OFFICE 10	252.5	23.5
OFFICE 11	173.7	16.2
OFFICE 12	286.7	26.6

TERMS

Renting an office at NIX Business Centre offers you the **flexibility of a 30-day rolling contract.**

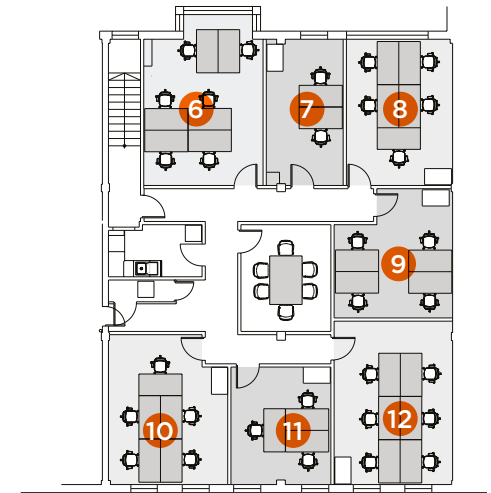
BUSINESS RATES

Please note business rates are not included and you will need to contact Test Valley Borough Council directly to arrange this. Small business relief may be available.

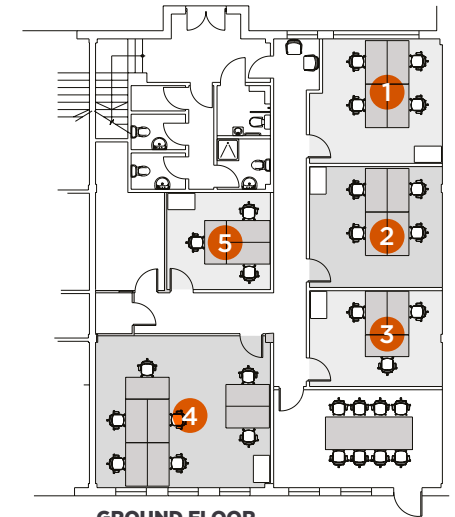
FURTHER INFORMATION

If you would like to view our spaces or if you have any questions, please do not hesitate to contact:

VICTORIA LUDFORD
info@nixbusinesscentre.co.uk
01794 337337



FIRST FLOOR



GROUND FLOOR



Indicative only