



Limers Lane Northam, North Devon

A stunning collection of 3 and 4 bedroom new homes close to the River Torridge near Bideford, North Devon by **Strongvox**, an award-winning West Country developer.

Charming coastal living







Welcome to Limers Lane

Limers Lane, near Bideford, is located a short distance from the River Taw estuary, and is our latest beautifully thought out Strongvox development.

Founded in 2004, we've worked hard to create our reputation for delivering exceptional, beautifully designed homes in wonderful West Country locations. We build an average of 200 homes a year, which means we can keep an eye on the detail for every house we build (across just over 40 sites to date) – and that's important to us. Considerate of local architecture and design influences, our sites are sympathetic to their surroundings with every house displaying individuality. We pay great attention to detail and our appreciation of traditional design and materials echoes throughout our new homes, setting us apart from bigger developers. We don't just build the same houses everywhere.



Bideford Quayside



Pannier Market, Barnstaple



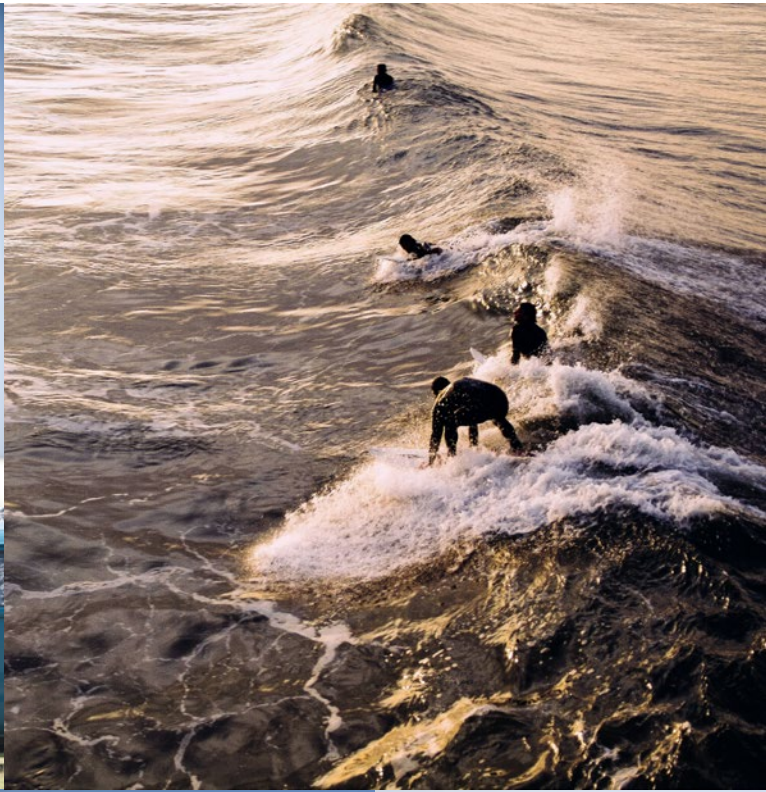
Bucks Mills beach

“We're thrilled to build this beautiful development in Northam, a stunning coastal town in North Devon. Our homes' design and specifications align seamlessly with the surroundings, making it an ideal fit for the area.”



Toby Ballard

Managing Director, Strongvox Homes





Explore North Devon's estuaries and beyond

Discover **Limers Lane** in Northam: a gateway to serene waterside and countryside living, with excellent travel links and proximity to Devon's treasures. Ideally situated near the picturesque town of Bideford and adjacent to the stunning landscapes of Exmoor National Park.

Limers Lane connects directly to the famous South West Coast Path - a route that stretches 630 miles from Minehead to Poole! Alternatively, across the Torridge Bridge is the local Tarka Trail, a scenic cycling and walking route that winds through the picturesque Taw and Torridge estuaries. Other highlights include the open space of the Northam Burrows Country Park for walkers, the historic fishing village of Appledore, and the Victorian seaside resort of Westward Ho! with its pristine beach for swimmers and surfers.

Further afield, Northam is well-served by car - the majestic Torridge Bridge connects the M5 via the A361 to Bristol and Exeter, both with airports. Alternatively, take the A39 south to Bude, Cornwall, or north to Barnstaple - a bustling market town and the closest main railway station for longer journeys.



Queens Theatre, Barnstaple



Tarka Trail Cycle Hire, Barnstaple Railway Station



View across River Torridge from Bideford Quay

Exmoor National Park (by car)	45 mins
Bude (by car)	45 mins
Barnstaple Train Station to Exeter (by train)	1 hour 10 mins
Exeter Airport (by car)	1 hour 15 mins
Padstow (by car)	1 hour 33 mins
Bristol Airport (by car)	1 hour 55 mins



CROYDE

A361

SAUNTON

4

NORTH
DEVON COAST
NATIONAL
LANDSCAPE

BRAUNTON

BARNSTAPLE

3

RIVER
TAW

CROW
POINT

2

NORTHAM
BURROWS
COUNTRY
PARK

INSTOW

7

RIVER
TORRIDGE

6


Limers
Lane

A39

1

5

A39

NORTHAM

8

BIDEFORD



1. Street scene at Limers Lane



2. Northam Burrows



3. Barnstaple High Street



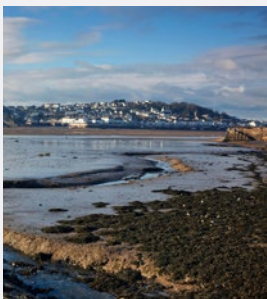
4. Saunton Sands



5. Tarka Trail



6. Westward Ho!



7. Appledore



8. Bideford



Limers Lane, Northam North Devon

Limers Lane is where modern living meets coastal charm. Featuring beautifully designed and crafted new homes within a thoughtful layout that retains a welcome feeling of space, considerate of the local surroundings and maritime heritage whilst promoting connected, comfortable, community living.



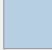

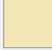

Surrounded by wonderful countryside to explore and expansive coastlines to enjoy, **Limers Lane** offers year-round opportunities for well-being in a friendly village community. Whether it's an invigorating winter hike through Exmoor, followed by a cosy pub meal, or sharing a wood-fired pizza with friends during a lazy day on Saunton Sands, there's something for everyone. Local amenities include a primary school, high street independents and cafés, the Torridge Leisure Centre, and the famous Royal North Devon Golf Club. Bideford boasts independent retailers on the high street, supermarkets for convenience, the historic Pannier Market and quayside dining options, as well as cultural events and festivals. Families will find both primary and secondary schools, as well as Bideford College for further education.

Appledore (car)	5 mins
Bideford (cycle)	10 mins
Westward Ho! (cycle)	12 mins
Barnstaple (car)	18 mins
Saunton Sands (car)	30 mins
Taunton (car via A361)	1 hour 15 mins
Exeter (car via A377)	1 hour 20 mins



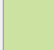


Limers Lane

Open Market House Types

- | | |
|--|---|
|  The Helford
(3 bed) |  The Blenheim
(4 bed) |
|  The Malvern
(3 bed) |  The Camden
(4 bed) |
|  The Wessex
(3 bed) |  The Knowle
(4 bed) |

Discounted Open Market House Types

- | | |
|--|---|
|  The Apartments
(1 or 2 bed) |  The Dunlin
(3 bed) |
|  The Teal
(2 bed) |  The Plover
(3 bed) |



Address:
 Limers Lane
 Northam
 Bideford
 North Devon
 EX39 2RG



This site plan is indicative only of the development.
 It is for general guidance and may be subject to change.



External finishes

The finish of each home at **Limers Lane** is carefully considered. We build using a variety of sympathetic finishes, either individually or in combination, which are paired with a pan or plain tiled roof and complemented by white windows. Please consult with our Sales Advisor for specific plot finishes.



White Light Render



Stone Render



Straw Yellow Render



Red Brick





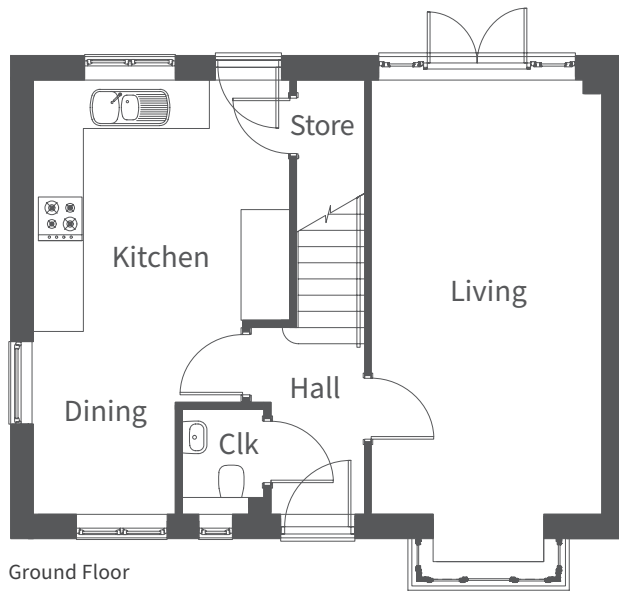
The Helford

Three bedroom home

The Helford has spacious and well-planned accommodation over two floors. The ground floor entrance hall leads to the cloakroom, kitchen/dining room and living room. The living room has French doors opening to the enclosed rear garden. The stairs (with storage), lead to the first floor and master bedroom with en-suite, two further bedrooms and family bathroom. A garage and driveway parking is provided. Interior space is 1,012 sq ft.

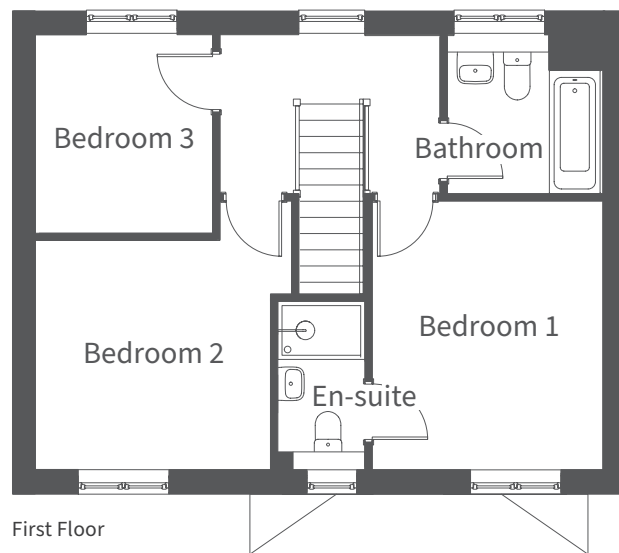
NOTE: Plots 12 and 13 are featured in the above CGI

Ground Floor	Millimetres	Feet / inches
Living	6635 x 3090	21'9" x 10'2"
Kitchen / Dining	5925 x 3475	19'5" x 11'5"



Ground Floor

First Floor	Millimetres	Feet / inches
Bedroom 1	3660 x 3140	12'0" x 10'4"
En-suite	2310 x 1180	7'7" x 3'10"
Bedroom 2	3205 x 3115	10'6" x 10'3"
Bedroom 3	2710 x 2390	8'11" x 7'10"
Bathroom	2165 x 2075	7'1" x 6'10"



First Floor

NOTE: Other floor plans and elevations for each property are available. Sizes are maximums. As each house is built individually, dimensions shown may vary +/- 50mm and the internal finishes may not always be the same. External finishes, materials, landscaping, positions and colours of windows and garages (where applicable) may also vary. Properties can also be constructed as mirror images of that shown. Please ask if you require further details or clarification.



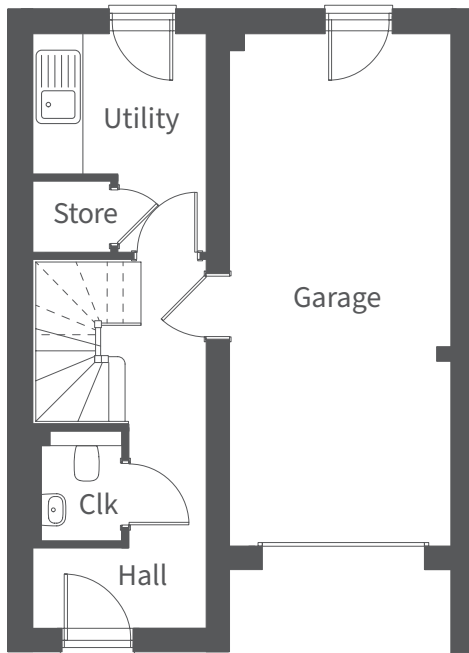
The Malvern

Three bedroom home

A wonderful three bedroom home arranged over three floors. The ground floor hall leads to a cloakroom, storage, a utility room with garden access, and internal garage access. The first floor features an open plan kitchen / dining space with a modern kitchen fitted with high quality stainless steel appliances and French doors with Juliette balcony. The separate living room also includes French doors with a Juliette balcony. Stairs lead to the second floor master bedroom with an en-suite, two further bedrooms, extra storage and a family bathroom. Integral garage and driveway parking space. Interior space is 1,232 sq ft.

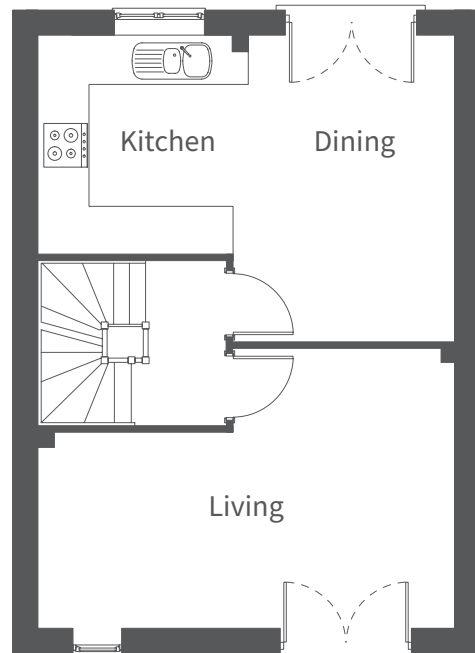
NOTE: Plots 30-34 are featured in the above CGI

Ground Floor	Millimetres	Feet / inches
Utility	2985 x 2325	9'10" x 7'8"
Garage	7045 x 3070	23'1" x 10'1"



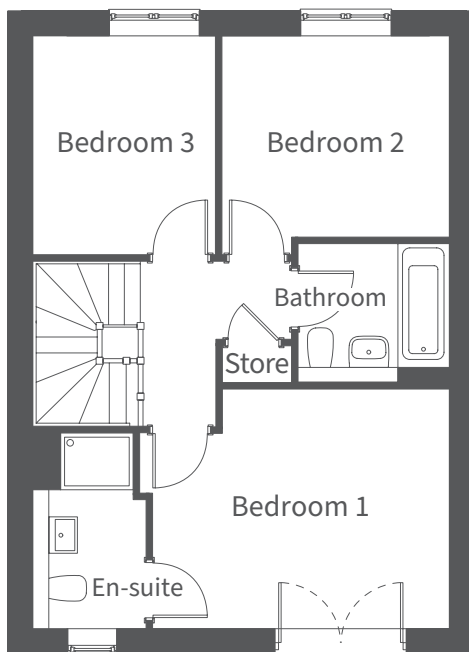
Ground Floor

First Floor	Millimetres	Feet / inches
Kitchen / Dining	5680 x 4190	18'8" x 13'9"
Living	5705 x 3830	18'9" x 12'7"



First Floor

Second Floor	Millimetres	Feet / inches
Bedroom 1	4260 x 3285	13'12" x 10'9"
En-suite	2680 x 1535	8'10" x 5'0"
Bedroom 2	3120 x 2735	10'3" x 8'12"
Bedroom 3	2975 x 2480	9'9" x 8'2"
Bathroom	2070 x 1900	6'9" x 6'3"



Second Floor

NOTE: Other floor plans and elevations for each property are available. Sizes are maximums. As each house is built individually, dimensions shown may vary +/- 50mm and the internal finishes may not always be the same. External finishes, materials, landscaping, positions and colours of windows and garages (where applicable) may also vary. Properties can also be constructed as mirror images of that shown. Please ask if you require further details or clarification.



The Wessex

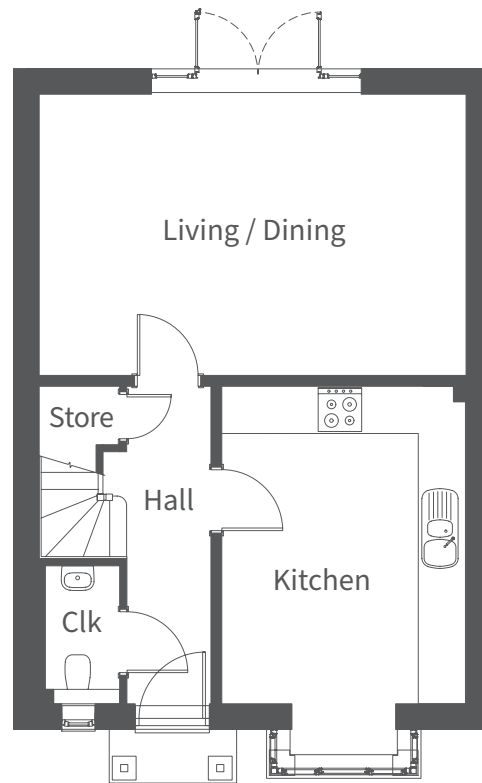
Three bedroom home



The Wessex is a stylish three bedroom home benefiting from well-planned accommodation over two floors. On the ground floor the entrance hall leads to the cloakroom, kitchen and living/dining room with French doors opening to the enclosed rear garden. The stairs (including storage) lead to the first floor and master bedroom with en-suite, two further bedrooms, family bathroom and storage. Garage and two parking spaces (except plot 8 which has two parking spaces only). Interior space is 1,096 sq ft.

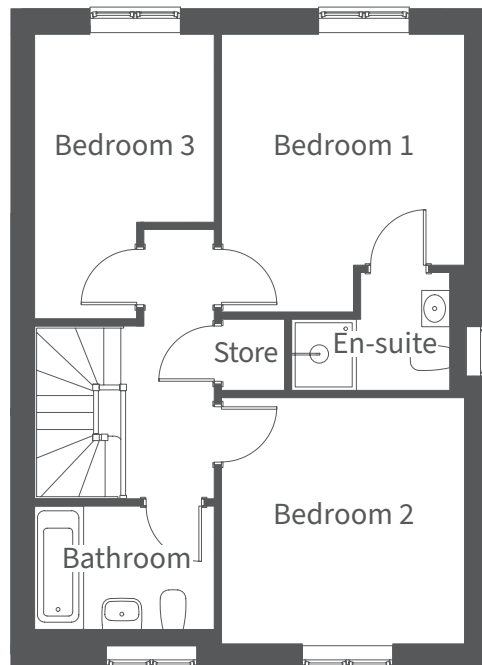
NOTE: Plots 19 and 20 are featured in the above CGI

Ground Floor	Millimetres	Feet / inches
Living / Dining	5920 x 3870	19'5" x 12'8"
Kitchen	5050 x 3405	16'7" x 11'2"



Ground Floor

First Floor	Millimetres	Feet / inches
Bedroom 1	3825 x 3345	12'7" x 10'12"
En-suite	2385 x 1625	7'10" x 5'4"
Bedroom 2	3390 x 3345	11'1" x 10'12"
Bedroom 3	3915 x 2475	12'10" x 8'1"
Bathroom	2475 x 1900	8'1" x 6'3"



First Floor

NOTE: Other floor plans and elevations for each property are available. Sizes are maximums. As each house is built individually, dimensions shown may vary +/- 50mm and the internal finishes may not always be the same. External finishes, materials, landscaping, positions and colours of windows and garages (where applicable) may also vary. Properties can also be constructed as mirror images of that shown. Please ask if you require further details or clarification.



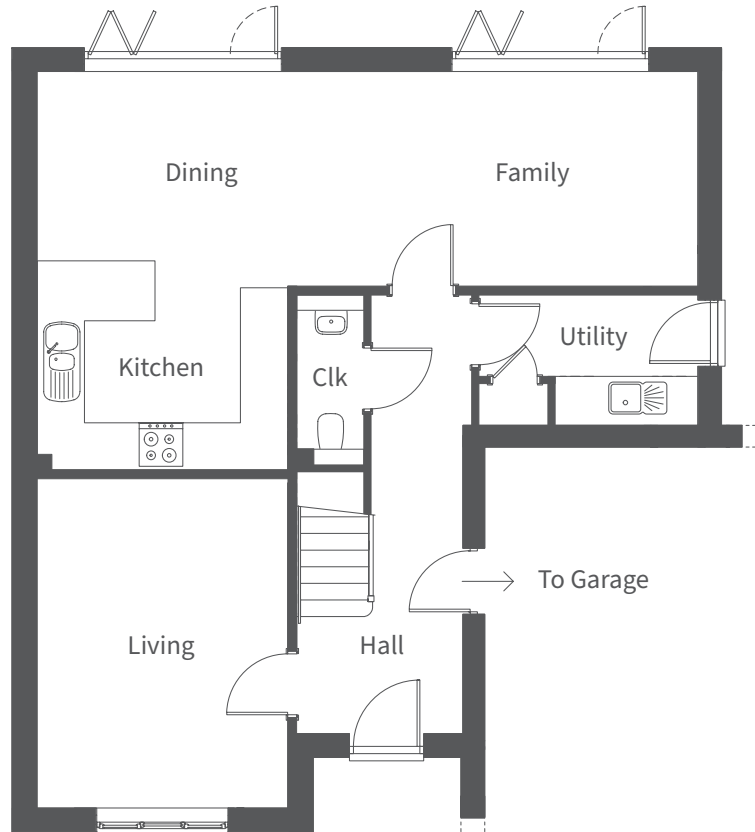
The Blenheim

Four bedroom home

The Blenheim is an imposing four bedroom detached family home, with integral double garage accessible from the hall, which also leads to the living room, cloakroom, utility and the impressive open plan kitchen/ dining and family area, with its two sets of bi-fold doors which lead directly to the rear garden. On the first floor, bedrooms 1 and 2 both have their own en-suite facilities, whilst there are two further good sized bedrooms and the family bathroom. Interior space is 1,774 sq ft.

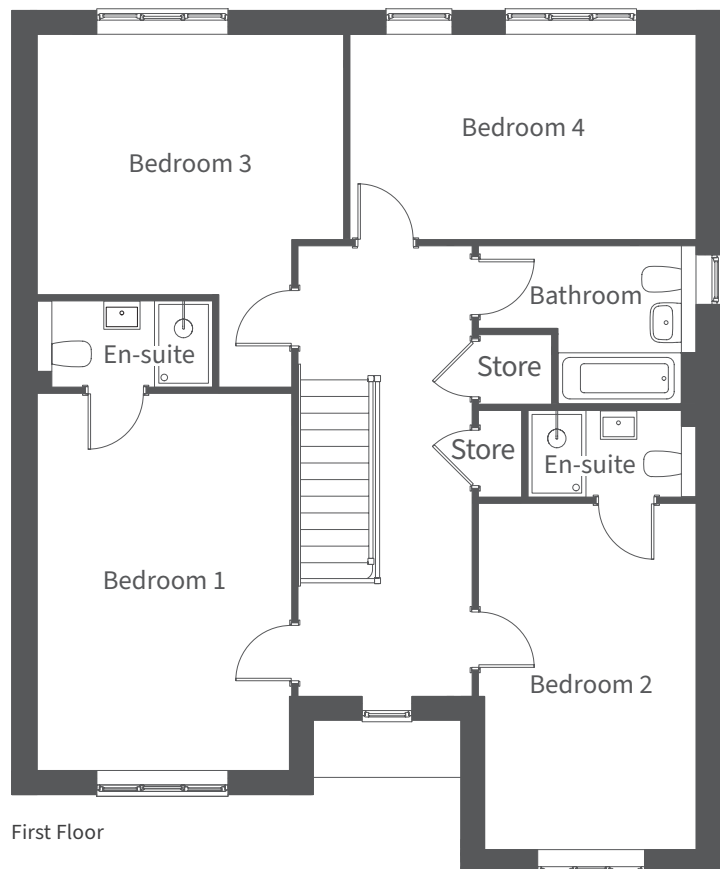
NOTE: Plot 18 is featured in the above CGI

Ground Floor	Millimetres	Feet / inches
Living	4490 x 3445	14'9" x 11'4"
Kitchen / Dining / Family	9070 x 5450	29'9" x 17'11"
Utility	2990 x 1760	9'10" x 5'9"



Ground Floor

First Floor	Millimetres	Feet / inches
Bedroom 1	5155 x 3495	16'11" x 11'6"
En-suite 1	2405 x 1180	7'11" x 3'10"
Bedroom 2	4765 x 2990	15'8" x 9'10"
En-suite 2	2305 x 1180	7'7" x 3'10"
Bedroom 3	4830 x 4210	15'10" x 13'10"
Bedroom 4	4760 x 2800	15'7" x 9'2"
Bathroom	2990 x 2165	9'10" x 7'1"



First Floor

NOTE: Other floor plans and elevations for each property are available. Sizes are maximums. As each house is built individually, dimensions shown may vary +/- 50mm and the internal finishes may not always be the same. External finishes, materials, landscaping, positions and colours of windows and garages (where applicable) may also vary. Properties can also be constructed as mirror images of that shown. Please ask if you require further details or clarification.



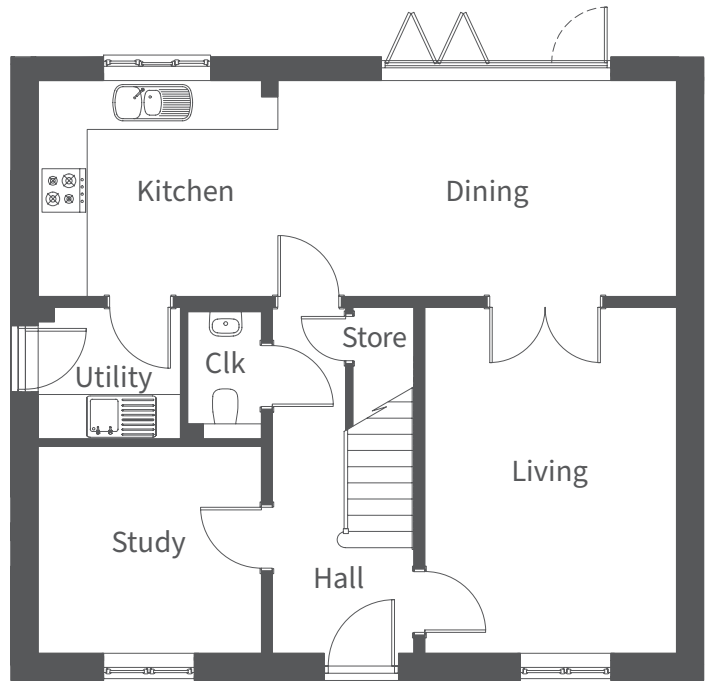
The Camden

Four bedroom home

An impressive detached four bedroom home benefiting from high specification and generous accommodation over two floors. On the ground floor the entrance hall leads to the living room, study, cloakroom, kitchen/dining room and under stairs storage. The living room has double doors through to the impressive kitchen/dining room which has bi-fold doors opening to the enclosed rear garden, as well as access to the utility room and side door. On the first floor there's an en-suite to the master bedroom, three further bedrooms, a family bathroom and an airing cupboard. A double garage and driveway parking are provided. Interior space is 1,493 sq ft.

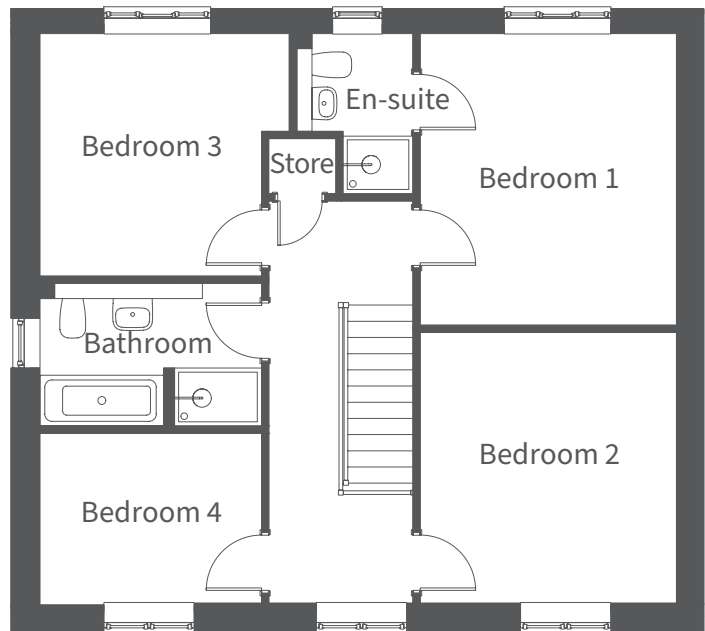
NOTE: Plot 16 is featured in the above CGI

Ground Floor	Millimetres	Feet / inches
Living	4790 x 3440	15'9" x 11'3"
Kitchen / Dining	8740 x 2950	28'8" x 9'8"
Study	3050 x 2825	10'0" x 9'3"
Utility	1935 x 1815	6'4" x 5'11"



Ground Floor

First Floor	Millimetres	Feet / inches
Bedroom 1	4010 x 3505	13'2" x 11'6"
En-suite	2200 x 1600	7'3" x 5'3"
Bedroom 2	3730 x 3505	12'3" x 11'6"
Bedroom 3	3435 x 3335	11'3" x 10'11"
Bedroom 4	3050 x 2340	10'0" x 7'8"
Bathroom	3050 x 1965	10'0" x 6'5"



First Floor

NOTE: Other floor plans and elevations for each property are available. Sizes are maximums. As each house is built individually, dimensions shown may vary +/- 50mm and the internal finishes may not always be the same. External finishes, materials, landscaping, positions and colours of windows and garages (where applicable) may also vary. Properties can also be constructed as mirror images of that shown. Please ask if you require further details or clarification.



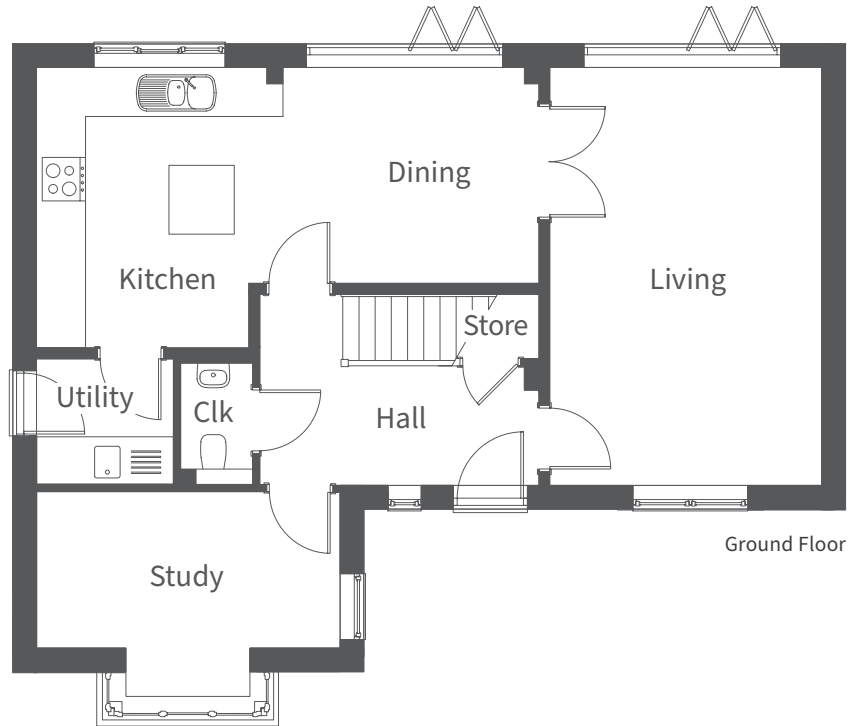
The Knowle

Four bedroom home

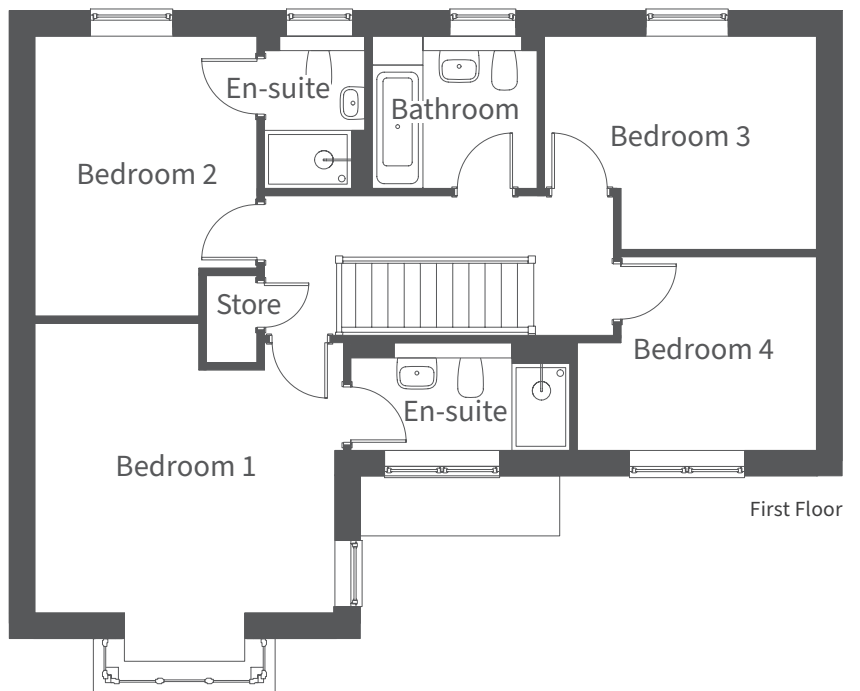
The Knowle is a stunning detached home benefiting from high specification and spacious accommodation over two floors. On the ground floor the entrance hall leads to the living room, study, cloakroom, kitchen/dining room and under stairs storage. The living room has bi-fold doors to the enclosed rear garden and double doors leading to the impressive kitchen/dining room, also with bi-fold doors opening to the garden and access to the utility room with side door. The first floor has en-suites to both the master and second bedrooms, two further bedrooms, a family bathroom and an airing cupboard. A double carport and four parking spaces are provided. Interior space is 1,563 sq ft.

NOTE: Plot 4 is featured in the above CGI

Ground Floor	Millimetres	Feet / inches
Living	5690 x 3710	18'8" x 12'2"
Kitchen / Dining	6890 x 3820	22'7" x 12'6"
Utility	1860 x 1720	6'1" x 5'8"
Study	4120 x 2150	13'6" x 7'1"



First Floor	Millimetres	Feet / inches
Bedroom 1	4120 x 3950	13'6" x 12'12"
En-suite	3020 x 1470	9'11" x 4'10"
Bedroom 2	3890 x 3060	12'9" x 10'0"
En-suite	2090 x 1380	6'10" x 4'6"
Bedroom 3	3740 x 2930	12'3" x 9'7"
Bedroom 4	3290 x 2660	10'10" x 8'9"
Bathroom	2270 x 2090	7'5" x 6'10"



NOTE: Other floor plans and elevations for each property are available. Sizes are maximums. As each house is built individually, dimensions shown may vary +/- 50mm and the internal finishes may not always be the same. External finishes, materials, landscaping, positions and colours of windows and garages (where applicable) may also vary. Properties can also be constructed as mirror images of that shown. Please ask if you require further details or clarification.



Limers Lane Discounted open market housing

Discounted open market housing is being provided by **Strongvox** at a discount to the full market value. The discount will be tied to a legal agreement, known as the *Section 106* and remains on the property for future sales. The buyer owns the whole of the property, there is no third party involved. This form of ownership is aimed at those people who can afford to buy a home of their own but not at the full market value.

Eligibility criteria applies to each property.

Please ask the Strongvox Sales Advisor for more details.



Limers Lane

Discounted open market housing

Discounted Open Market House Types

- | | |
|--|---|
|  The Apartments
(1 or 2 bed) |  The Dunlin
(3 bed) |
|  The Teal
(2 bed) |  The Plover
(3 bed) |



Address:
Limers Lane
Northam
Bideford
North Devon
EX39 2RG


**Strongvox
Homes**

This site plan is indicative only of the development.
It is for general guidance and may be subject to change.



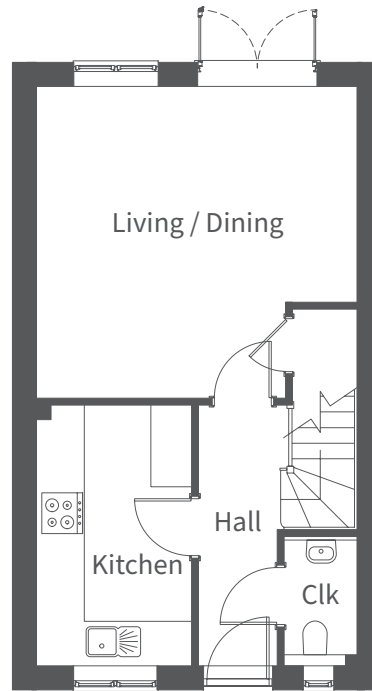
The Teal

Two bedroom discounted open market home

The Teal is a well-planned two bedroom home with accommodation over two floors. On the ground floor the entrance hall provides access to a cloakroom, kitchen, and living/dining room which feature French doors opening to an enclosed rear garden. The stairs (including storage) leads to the first floor master bedroom with en-suite, an additional bedroom, and a family bathroom. Two parking spaces are provided. Interior space is 874 sq ft.

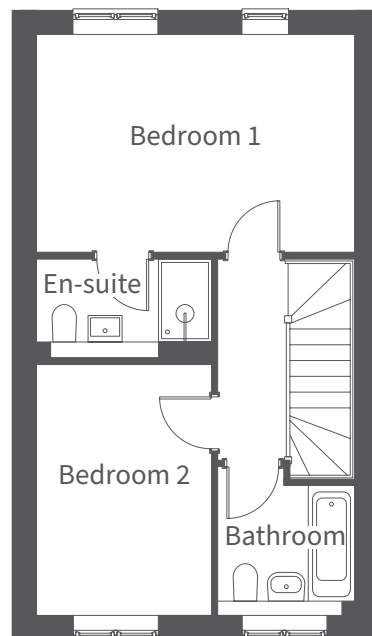
NOTE: Plot 9 (left) is featured in the above CGI

Ground Floor	Millimetres	Feet / inches
Kitchen	3825 x 2280	12'7" x 7'6"
Living / Dining	4685 x 4580	15'4" x 15'0"



Ground Floor

First Floor	Millimetres	Feet / inches
Bedroom 1	4685 x 3185	15'4" x 10'5"
En-suite	2560 x 1440	8'5" x 4'9"
Bedroom 2	3685 x 2560	12'1" x 8'5"
Bathroom	2025 x 1900	6'8" x 6'3"



First Floor

NOTE: Other floor plans and elevations for each property are available. Sizes are maximums. As each house is built individually, dimensions shown may vary +/- 50mm and the internal finishes may not always be the same. External finishes, materials, landscaping, positions and colours of windows and garages (where applicable) may also vary. Properties can also be constructed as mirror images of that shown. Please ask if you require further details or clarification.



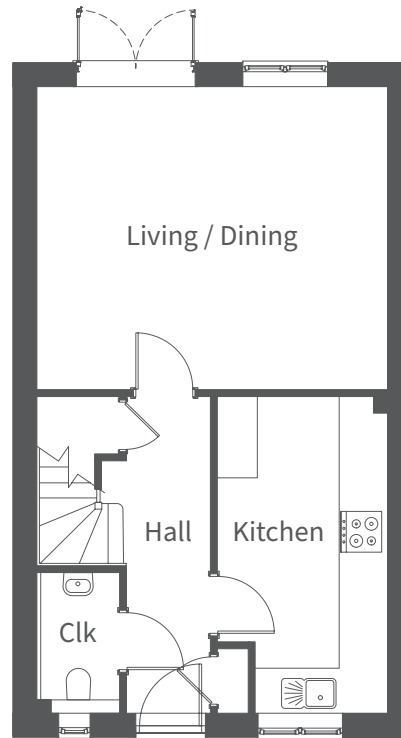
The Dunlin

Three bedroom discounted open market home

The Dunlin is a thoughtfully-planned three bedroom home. On the ground floor the entrance hall provides access to a cloakroom, kitchen, and living/dining room featuring French doors that open to an enclosed rear garden. The stairs (including storage) leads to the first floor master bedroom with en-suite, two additional bedrooms, storage and a family bathroom. Two parking spaces are provided. Interior space is 1,025 sq ft.

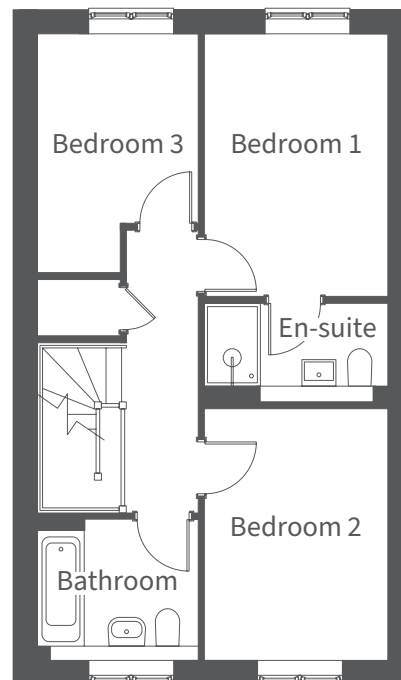
NOTE: Plots 10 (centre) and 11 (right) are featured in the above CGI

Ground Floor	Millimetres	Feet / inches
Kitchen	4640 x 2440	15'3" x 8'0"
Living / Dining	5135 x 4445	16'10" x 14'7"



Ground Floor

First Floor	Millimetres	Feet / inches
Bedroom 1	3860 x 2665	12'8" x 8'9"
En-suite	2665 x 1440	8'9" x 4'9"
Bedroom 2	5225 x 2665	17'2" x 8'9"
Bedroom 3	3500 x 2370	11'6" x 7'9"
Bathroom	2370 x 2050	7'9" x 6'9"



First Floor

NOTE: Other floor plans and elevations for each property are available. Sizes are maximums. As each house is built individually, dimensions shown may vary +/- 50mm and the internal finishes may not always be the same. External finishes, materials, landscaping, positions and colours of windows and garages (where applicable) may also vary. Properties can also be constructed as mirror images of that shown. Please ask if you require further details or clarification.



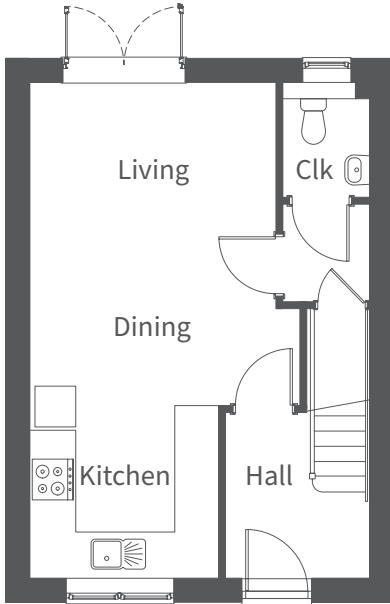
The Plover

Three bedroom discounted open market home

The Plover has well-planned, three bedroom accommodation over three floors. The ground floor hall leads to an open plan kitchen / dining / living space and French doors to an enclosed rear garden, plus cloakroom and understairs storage. The first floor features two bedrooms and a family bathroom with stairs continuing to the second floor master bedroom and storage. Two parking spaces are provided. Interior space is 932 sq ft.

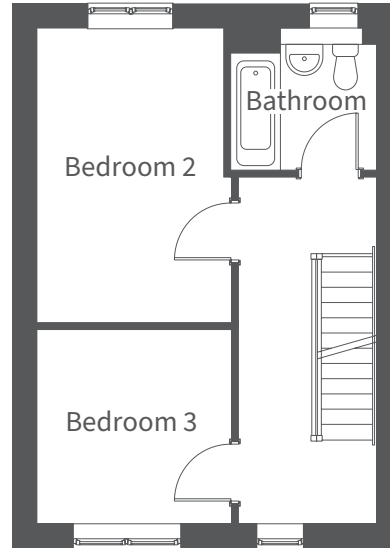
NOTE: Plots 28 (left) and 29 (right) are featured in the above CGI

Ground Floor Millimetres Feet / inches
 Kitchen / Dining / Living 7220 x 3595 23'8" x 11'10"



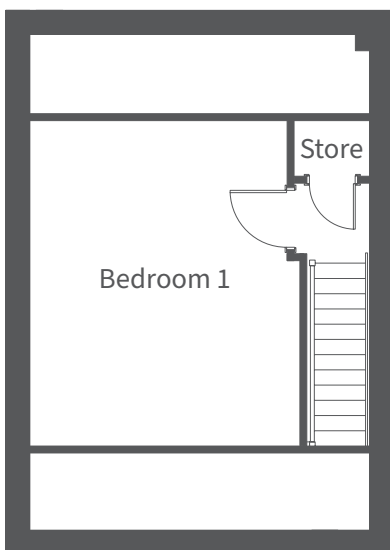
Ground Floor

First Floor Millimetres Feet / inches
 Bedroom 2 4300 x 2845 14'1" x 9'4"
 Bedroom 3 2845 x 2820 9'4" x 9'3"
 Bathroom 2125 x 2050 6'12" x 6'9"



First Floor

Second Floor Millimetres Feet / inches
 Bedroom 1 4230 x 3970 13'11" x 13'0"



Second Floor

NOTE: Other floor plans and elevations for each property are available. Sizes are maximums. As each house is built individually, dimensions shown may vary +/- 50mm and the internal finishes may not always be the same. External finishes, materials, landscaping, positions and colours of windows and garages (where applicable) may also vary. Properties can also be constructed as mirror images of that shown. Please ask if you require further details or clarification.



The Apartments

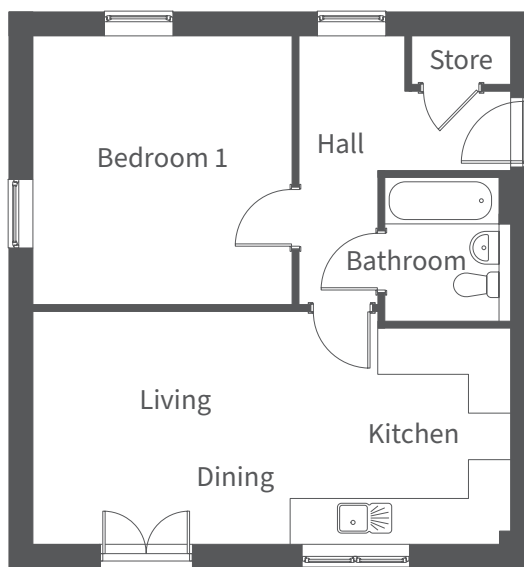
One and two bedroom discounted open market apartments

Our one and two bedroom apartments offer modern living on a single floor in a beautiful coastal location. A spacious entrance hall with storage leads to an open-plan kitchen, dining and living area featuring French doors to a Juliette balcony, one or two bedroom(s) and a bathroom. Apartments come with either one or two parking spaces. Interior space is 562 sq ft (one bedroom) and 775 sq ft (two bedroom).

NOTE: Plots 35 - 40 are featured in the above CGI

One bedroom apartments

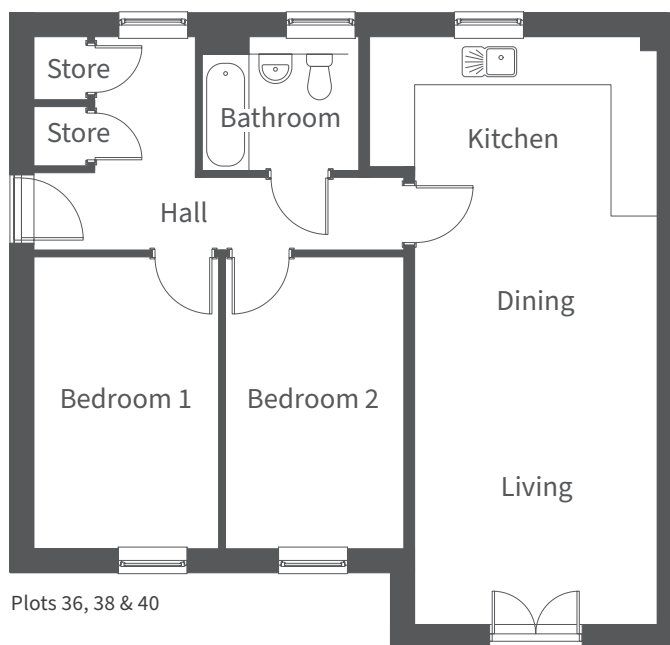
Plots 35, 37, 39	Millimetres	Feet / inches
Kitchen / Dining / Living	7370 x 3410	24'2" x 11'2"
Bedroom 1	3935 x 3805	12'11" x 12'6"
Bathroom	2140 x 1700	7'0" x 5'7"



Plots 35, 37 & 39

Two bedroom apartments

Plots 36, 38, 40	Millimetres	Feet / inches
Kitchen / Dining / Living	8570 x 4185	28'1" x 13'9"
Bedroom 1	4250 x 2725	13'11" x 8'11"
Bedroom 2	4250 x 2610	13'11" x 8'7"
Bathroom	2290 x 1700	7'6" x 5'7"



Plots 36, 38 & 40

NOTE: Other floor plans and elevations for each property are available. Sizes are maximums. As each house is built individually, dimensions shown may vary +/- 50mm and the internal finishes may not always be the same. External finishes, materials, landscaping, positions and colours of windows and garages (where applicable) may also vary. Properties can also be constructed as mirror images of that shown. Please ask if you require further details or clarification.

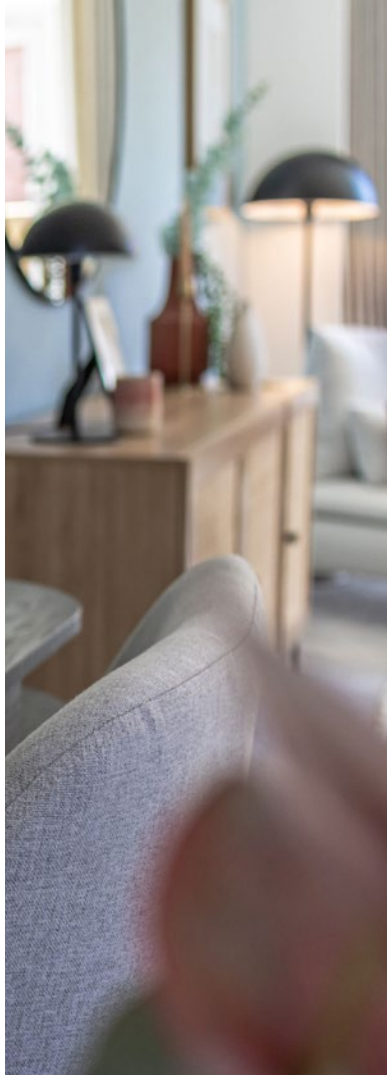




Elegant living. Outstanding quality.

Strongvox has carefully considered every aspect of your new home from location to house design, construction to internal finishing touches using the very best brands. In the process we create homes of outstanding quality and specification ensuring everyday living is as elegant and enjoyable as possible.







High specification

Every aspect of the final specification has been thought about with you in mind, from the traditional design, to the practical benefits of modern living. Duravit taps complete the sanitary ware which is complemented by stylish wall tiling. Every detail has been considered, because we know how important the finishing touches are to making a home.

Kitchen

- Choice* of fully fitted kitchen units with ample wall and floor cupboards
- Choice* of profile worktops with matching up-stands
- Eye level stainless steel single oven (3 beds)/double oven (4 beds) with 4 burner gas hob and hood extractor
- Stainless steel/glass splash back* behind the hob
- Stainless steel bowl sink (3 beds)/1½ bowl sink (4 beds) with chrome monobloc mixer tap
- Integrated fridge/freezer and dishwasher

Utility (4 beds only)

- Complementing fitted kitchen units with profile worktops
- Stainless steel 1 bowl sink with chrome monobloc mixer tap
- Space and plumbing for washing machine, plus space for tumble dryer
- Recessed down lights

Bathroom, En-suite and Cloakroom

- Duravit sanitary ware in white with stylish Duravit taps
- Concealed cisterns together with wall hung toilet
- Full height tiling to en-suite shower, plus a concealed thermostatic shower valve with low profile resin stone shower tray
- Full height around bath, plus shower and bath screen (unless a separate shower is provided - eg Camden)
- Half height tiling to basin and toilet when situated on the same wall (splash back tiling behind basin when not on the same wall, includes cloakroom)
- Saneux Aqua Maison gloss white side panel to bath
- Thermostatically controlled radiators and heated chrome Towelrad 'Pisa' towel rails to en-suite and bathroom

Decoration and Internal Finish

- Smooth white emulsion finish to walls and ceilings
- White cottage style internal doors
- Front door with multi point locking system

Discounted open market home specifications

- Kitchens by The Kitchen Company with space for a dishwasher
- Built-in single oven with gas hob
- Integrated fridge
- Downlights to entrance hall, cloakroom, kitchen and bathrooms
- Duravit sanitary ware as above

Electrical Installation

- BT points fitted to:
 - Cupboard in hall or understairs for broadband router
 - Hall (plus study in Camden and Knowle)
- Power sockets with USB points fitted to living room, kitchen and bedroom 1 (plus study in Camden and Knowle)
- TV points in the living room, bedroom 1, and bedroom 2
- Mains operated smoke alarm with battery backup
- Recessed down lights to kitchen, entrance hall, bathroom, en-suite and cloakroom
- External recessed down light or coach light fitted to front and rear
- Infrastructure to garage (where provided) or parking space - 7KW output for electric vehicle charging point

Energy Efficiency, Heating and Insulation

- Gas fired central heating system with combi boiler to 3 beds and to 4 beds with one en-suite. Condensing boiler with cylinder to 4 beds with two en-suites (Knowle and Blenheim)
- Thermostatically controlled radiators and heated towel rails to en-suite and bathroom
- Mains pressure hot water system with electronic programmer
- Double glazed uPVC windows
- Cavity wall and loft insulation installed to Premier Guarantee standards
- Energy Performance Certificate provided for each home
- Photovoltaic (solar) panels fitted to all plots

External Finishes

- External tap provided
- Front gardens landscaped (finish dependent on planning)
- Rear gardens rotavated, top soiled and fenced
- Patios and paths laid in paving slabs (in line with planning)
- Personnel door to some garages (please enquire)

Premier Guarantee

- Each of our homes are independently surveyed during the course of construction by Premier Guarantee who will issue their 10 year Warranty Certificate upon structural completion of the property

*Subject to build stage.

PLEASE NOTE: Specification is subject to change if product becomes unavailable.

The Key to Fine Living

At Strongvox Homes, we are building a reputation for our beautifully crafted West Country homes. With scrupulous attention to detail – from site planning and individual house design, through to quality craftsmanship and superior finished décor – our houses are places you’ll be proud to call home.

We are a small and highly experienced team who take pride in constructing beautifully designed homes that we each know personally. Founded in Taunton in 2004, we have created just over 40 developments to date and we build about 200 new homes each year. We are small enough to keep our eyes on every aspect of our work and local enough to know and understand each of the communities in which we build. From conception to completion, our approach sets us apart:

Every Strongvox Homes development is sympathetic to its surroundings and considerate to the local architecture and the community.

Every Strongvox home displays individuality in its styling and is constructed using carefully selected naturally weathering materials. You’ll love our variety of exterior finishes that make our homes different and set them apart.

Inside every Strongvox home, to make your buying decision more straightforward, you’ll discover a whole range of features which, unlike the bigger developers, we include as standard: superior fully fitted kitchens with soft close doors and appliances, recessed ceiling down lights, upmarket cottage style doors, high quality bathroom furniture and brassware, chrome heated towel rails, to name but a few.

In short, we provide you with a beautiful home whilst making the whole buying process as simple as possible, plus we’ve various incentives including **PartExchange** and **AssistedMove** to make buying a Strongvox home even easier.



Two further incentives to choose to make buying a Strongvox home easier:



PartExchange

If you’ve seen your perfect home but haven’t sold your existing property, **PartExchange** could allow you to reserve and secure it, with no Estate Agent fees to pay and we’ll buy your current house so you can get moving.*



AssistedMove

Let us do the work! With **AssistedMove** we take away the pressures of moving home. We’ll help you choose a new home that’s right for you and then we handle all aspects of selling your current home.*

*Subject to terms and conditions



Home Builders Federation

Strongvox are proud to be members of the **Home Builders Federation**, the representative body of the house building industry in England and Wales. The HBF member firms account for 80% of all new homes built in England and Wales every year.



Inspirations

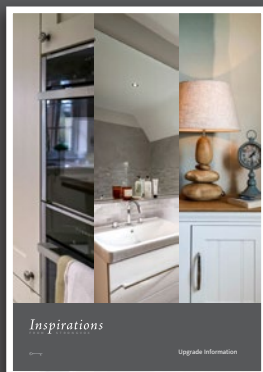
FROM STRONGVOX



Be inspired by our range of extras on offer to personalise your dream home...

Style your home your way with beautiful fixtures and fittings from our *Inspirations* range.

For the full list of *Inspirations* relevant to your home, please speak to your Sales Advisor early in the buying process. All extras are subject to build stage.



Our Customer Charter

At Strongvox, we take pride in delivering exceptional service to all of our customers. We understand that our success is directly linked to the satisfaction of our customers, which is why we have developed a comprehensive Customer Charter. We have three core principles: transparency, communication, and quality. In the unlikely event that things go wrong, you have the reassurance of knowing that we subscribe to the Consumer Code for Home Builders scheme, which sets high standards for its members to adhere to.



Trained and knowledgeable staff will be on hand throughout your purchasing journey to make your move as smooth as possible



We are available to answer any questions and here to help you personalise your new home with selections from our Standard Choices and *Inspirations* ranges



You will be kept fully informed about the progress of your purchase



You will be provided with health and safety advice to minimise the risk of danger during construction of your new home



Your new home is covered by a 10 year structural warranty and we will provide you with information about the cover



You will be provided with information about our after sales service. Our aim is to deal effectively and efficiently with both routine service matters and any emergencies



All aspects of your new home will be fully demonstrated to you before you move in



You will be provided with details of who to contact if you believe we have not fulfilled our Charter commitments.

Strongvox Customer Care

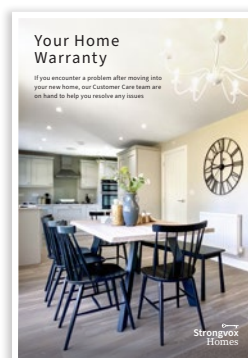
We want you to enjoy your journey and love living in a Strongvox home for many years to come. From the moment you get the keys to your new home, we're on hand to help with any issues you encounter.


Contacting Customer Care

Telephone: 01823 446194

Email: customercare@strongvox.co.uk

www.strongvox.co.uk/customer-care





“I just wanted to say a huge thank you for the goodwill you offered in order for us to secure our home. Now we are in and the realisation has sunk in a little more that we are actual homeowners I wanted to share my gratitude for all those who made it a possible. The flat is everything I could have wished for and more.

All the people who work at Strongvox have made this process easy and enjoyable and I have nothing but good things to say about the whole process.”

Louise – Laurel Hill, Cribbs causeway, September 2023



Limers Lane
Northam, North Devon

Address Limers Lane, Northam, Bideford, North Devon EX39 2RG

Email limerslane@strongvox.co.uk

Telephone 07484 066173

These particulars have been prepared in good faith to give a fair overall view of the property and details may vary from time to time. It should not be assumed that any contents/furnishings/furniture etc photographed or illustrated including the Computer Generated Images in these particulars are included in the sale. Any distances referred to are given as a guide only and are not precise. The information in these particulars does not constitute any part of a contract or warranty.
Design and print production: Harvest Design



**Strongvox
Homes**

STRONGVOX HOUSE
BLACKBROOK BUSINESS PARK
BLACKBROOK PARK AVENUE
TAUNTON, SOMERSET TA1 2PX

WWW.STRONGVOX.CO.UK

TEL: 01823 444055

 @STRONGVOXHOMES

 STRONGVOXHOMESUK