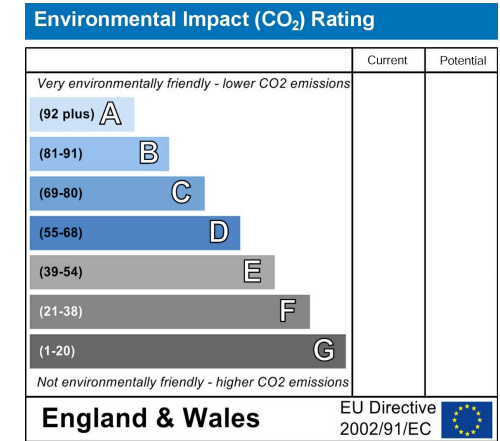
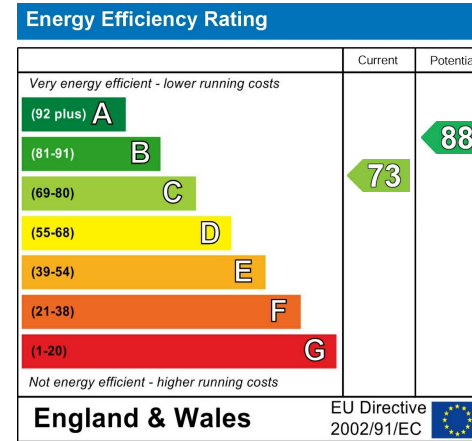


Property Name:
10 Waterford Close
Cardiff
CF11 8JN

Price:
£270,000

Qualifier:
Asking price



The Bullet Points

- Three-bedroom semi-detached
- Spacious living room
- Bright conservatory
- Modern shower room
- Spacious single bedroom
- Indoor porch entrance
- Large kitchen diner
- Low-maintenance sun trap garden
- Two generous double bedrooms
- Convenient location near amenities



The Main Text

Welcome to Waterford Close, Cardiff, CF11 8JN, a delightful three-bedroom semi-detached house offering comfortable and spacious living. As you step inside, you are greeted by an indoor porch, providing a convenient transition into the home. The entrance leads you into the inviting living room, where the staircase to the second floor stands prominently ahead. Moving through, you'll discover the heart of the home—a large kitchen diner at the rear of the property. The kitchen diner offers ample space for cooking and dining, with patio doors leading to a generously sized conservatory, flooding the space with natural light and providing an ideal spot for relaxation or entertaining.

You can access the low-maintenance sun trap garden from the Orangery, which offers a private outdoor retreat perfect for enjoying sunny days or al fresco dining. Upstairs, towards the rear of the house, you'll find a modern shower room complete with a toilet and sink, offering convenience and functionality. A well-proportioned double bedroom is adjacent to the shower room, providing a peaceful sanctuary for rest.

Towards the front of the house, you'll discover another large double bedroom, offering ample space and comfort. A spacious single bedroom awaits, providing versatility to accommodate guests, children, or a home office. Waterford Close offers a comfortable living space but also the convenience of its location, with easy access to local amenities, schools, and transport links. Don't miss the opportunity to make this charming property your new home!

Additional Information

Type of home: Semi Detached House

Tenure: Freehold

Council tax band: E

County: Cardiff

EPC: C

Local Area

Nestled in the heart of Cardiff, Waterford Close offers residents a vibrant and convenient locale to call home. Located within easy reach of bustling city amenities, including shops, restaurants, and entertainment venues, residents enjoy the best

urban living. For outdoor enthusiasts, nearby parks and green spaces provide opportunities for leisurely strolls or picnics with family and friends. With excellent transport links connecting to the city centre and beyond, commuting is a breeze, making exploring all that Cardiff offers easy. Additionally, the area boasts a sense of community, with local events and activities fostering connections among neighbours. Whether you're seeking excitement in the city or tranquillity in nature, Waterford Close provides the perfect balance for a fulfilling lifestyle.

Schools

Waterford Close is surrounded by a selection of top-notch schools, making it an ideal location for families seeking quality education for their children. Various options are available from primary to secondary levels to cater to diverse educational needs. Local primary schools provide a nurturing environment where young learners can thrive and develop essential skills. Additionally, nearby secondary schools offer comprehensive curriculums and excellent facilities to support students' academic journey. With dedicated teaching staff and a focus on holistic development, these schools ensure that students receive the best possible education. Parents can have peace of mind knowing that their children have access to outstanding educational opportunities near their Waterford Close home.

Local Transport

Residents enjoy excellent access to local transport options, making commuting and travelling around the area a breeze. The neighbourhood is well-served by bus routes, providing convenient connections to the city centre and surrounding areas. The nearby train station also offers regular services, allowing for easy access to further destinations. For those who prefer to drive, the property benefits from proximity to major road networks, including the M4 motorway, facilitating swift travel across the region. Whether commuting to work, exploring the vibrant city of Cardiff, or embarking on leisurely day trips, residents of Waterford Close have an array of transportation options at their doorstep.



RE/MAX
PROPERTY HUB

10 Waterford Close, Cardiff, CF11 8JN

The Photographs

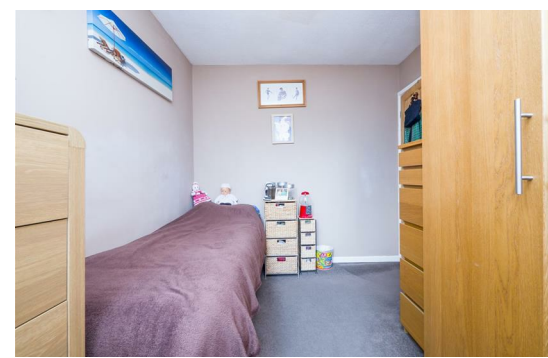
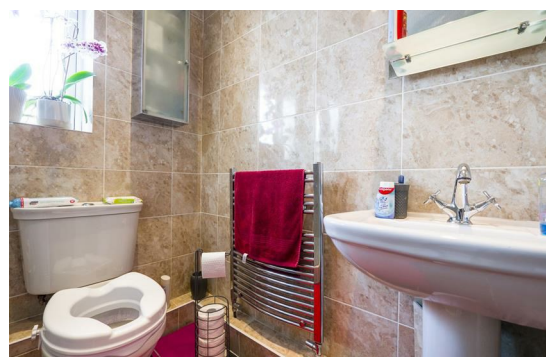
Please note: we have provided space for 48 photographs over the next four pages, but we may not fill all 48 spaces if we don't need to. If there are more than 48 photographs then we will email the remainder to you.



10 Waterford Close, Cardiff, CF11 8JN

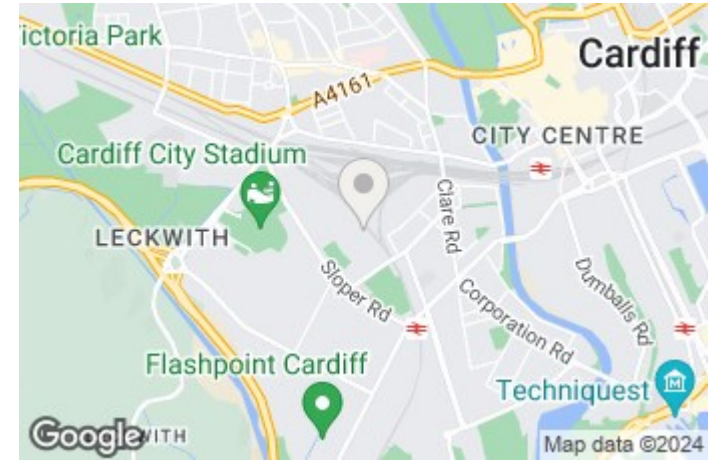
The Photographs

Please note: we have provided space for 48 photographs over the next four pages, but we may not fill all 48 spaces if we don't need to. If there are more than 48 photographs then we will email the remainder to you.



RE/MAX
PROPERTY HUB

10 Waterford Close, Cardiff, CF11 8JN



This floor plan is for illustrative purposes only. It is not drawn to scale. Any measurements, floor areas (including any total floor area), openings and orientations are approximate. No details are guaranteed, they cannot be relied upon for any purpose and do not form any part of any agreement. No liability is taken for any error, omission or misstatement. A party must rely upon its own inspection(s). Powered by www.Propertybox.io



RE/MAX
PROPERTY HUB

10 Waterford Close, Cardiff, CF11 8JN