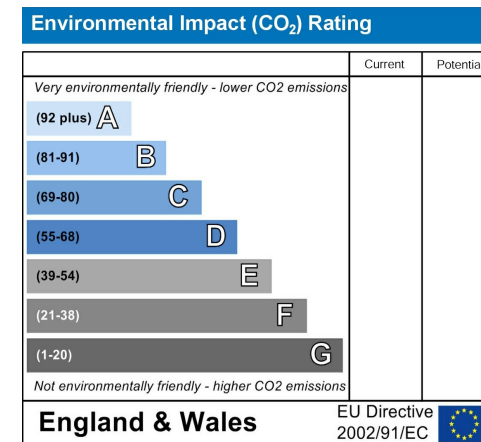
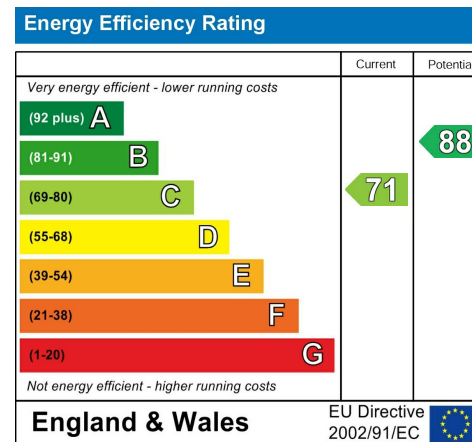


Property Name:
Bungalow
29 St Osyth Court
Barry
CF62 6RT

Price:
£310,000

Qualifier:
Asking price



The Bullet Points

- Located in the prestigious west end of Barry at St Oyth Court, within a luxurious complex
- Allocated parking space within the secure confines of the complex for added convenience
- Low-maintenance artificial grass on the balcony for effortless upkeep. Spacious open-plan living room distinguished by a stylish navy blue wall
- Modern, white kitchen boasting abundant storage cupboards and space for electrical appliances
- Sleek, modern bathroom equipped with a shower
- Rare-to-market two-bedroom bungalow offering exclusive and comfortable living
- Stunning ground-floor balcony overlooking Romily Park and providing unparalleled sea views
- Spacious open-plan living room distinguished by a stylish navy blue wall
- Two substantial double bedrooms offer ample personal space
- Private and serene outdoor decking space and garden perfect for relaxation and entertaining



The Main Text

*** No Chain ***

Nestled in the heart of Barry's prestigious west end, at St Oyth Court, lies an exquisite two-bedroom bungalow, a rare gem that seldom comes to market. The property is situated within a luxurious complex featuring high-end apartments, offering residents unparalleled comfort and exclusivity.

The bungalow has an allocated parking space within the complex's secure confines, ensuring homeowners' peace of mind.

A showstopper of the property is its stunning ground-floor terrace. With magnificent sea views and a picture-perfect overlook of Romily Park, it is a serene retreat to unwind in, come sunrise or sunset. The terrace has been adorned with low-maintenance artificial grass, allowing you to enjoy the aesthetic benefits of green space without the accompanying upkeep.

This bungalow is the epitome of luxury living in Barry's west end, an opportunity not to be missed. Whether you're a first-time buyer or looking for your forever home, St Oyth Court offers an enviable lifestyle. Don't miss out. Contact us to arrange a viewing today!

Ground Floor

Internally, the bungalow offers a generously spacious open-plan living room. The room's defining feature is its stylish navy blue wall, contrasting the contemporary white kitchen beautifully. The kitchen is a culinary enthusiast's dream, with abundant storage cupboards and plenty of space for electrical appliances.

Both bedrooms in the property are of a substantial double size, promising ample personal space. The rooms are bathed in natural light, offering a warm and inviting ambience.

The modern bathroom has a shower and is designed in a sleek style that matches the rest of the property's modern aesthetic.

Externally, the property offers a private decking space and a garden, perfect for hosting BBQs, alfresco dining, or simply soaking up the sun in privacy.

The Local Area

The bungalow is in the heart of Barry's prestigious west end, known for its beautiful surroundings and strong community spirit. Renowned for its stunning coastline and scenic parks, the local area offers many outdoor activities. Romily Park, which the bungalow overlooks, is a local favourite featuring a historic Victorian garden, perfect for strolls and picnics. In addition, the property is within a short distance of various local amenities, including boutique shops, restaurants, cafes and excellent schools. With its unique blend of seaside tranquillity and convenient urban living, Barry provides a beautiful setting for a high-quality lifestyle.

Transport Links

Barry's west end, home to St Oyth Court, is exceptionally well-connected, offering excellent local transport links. For daily commuters, the Barry train station is a short drive away, providing regular services to Cardiff, Bridgend, and beyond, making it easy to travel for work or leisure. The area is also well-served by bus routes connecting Barry to

surrounding towns and the city centre. For those travelling further afield, Cardiff Airport is just a brief journey away, offering national and international flights. Moreover, the area's well-maintained road network provides quick and easy access to the M4 motorway. Whether by rail, road or air, getting around is a breeze when you're based in Barry.

Schools

Barry's west end is privileged to be close to various excellent schools, making it a highly sought-after location for families. Parents can choose from multiple primary and secondary schools, many of which have received high ratings from Ofsted. Romilly Primary School is nearby and enjoys a strong reputation for its nurturing environment and quality teaching. Whitmore High School for secondary education. Commitment to academic excellence and extensive extracurricular programs. Also within reach are numerous nurseries and childcare facilities catering to the needs of the youngest residents. The local area offers a supportive and high-quality education network from the early years to further education.

Additional Information

Tenure: Leasehold

Council tax band: E

EPC: C

Borough: Vale of Glamorgan

Lease Term: 999 years

Lease Left: 986 years

Ground Rent & Service charge: £1,080 PA

Get pre-approved for a mortgage

A pre-approval letter from a lender will give you a better idea of how much you can afford to spend on a property. This will also give you an advantage when making an offer on a property, as the seller will know you have already been approved for a mortgage.

Local Estate Agent - Conrad Binding

RE/MAX Estate Agents Barry is a local estate agency in Barry, Wales. As a self-employed estate agent, the business operates with over a decade of experience in the industry.

RE/MAX Estate Agents Barry specializes in helping clients buy and sell properties in the local area. They offer a range of services to clients, including property valuations, property listings, property management, and negotiating offers.

One unique aspect of RE/MAX Estate Agents Barry is their love for dogs. They understand the importance of pets in the home buying and selling process and welcome furry friends into their office.

Overall, RE/MAX Estate Agents Barry is a reliable and experienced estate agency business that focuses on providing quality service to its clients in the Barry area.

If you are interested in getting any advice, please get in touch with the local agent - Conrad Binding.



RE/MAX
PROPERTY HUB

Bungalow, 29 St Osyth Court, Barry, CF62 6RT

The Photographs

Please note: we have provided space for 48 photographs over the next four pages, but we may not fill all 48 spaces if we don't need to. If there are more than 48 photographs then we will email the remainder to you.



Bungalow, 29 St Osyth Court, Barry, CF62 6RT

The Photographs

Please note: we have provided space for 48 photographs over the next four pages, but we may not fill all 48 spaces if we don't need to. If there are more than 48 photographs then we will email the remainder to you.



RE/MAX
PROPERTY HUB

Bungalow, 29 St Osyth Court, Barry, CF62 6RT

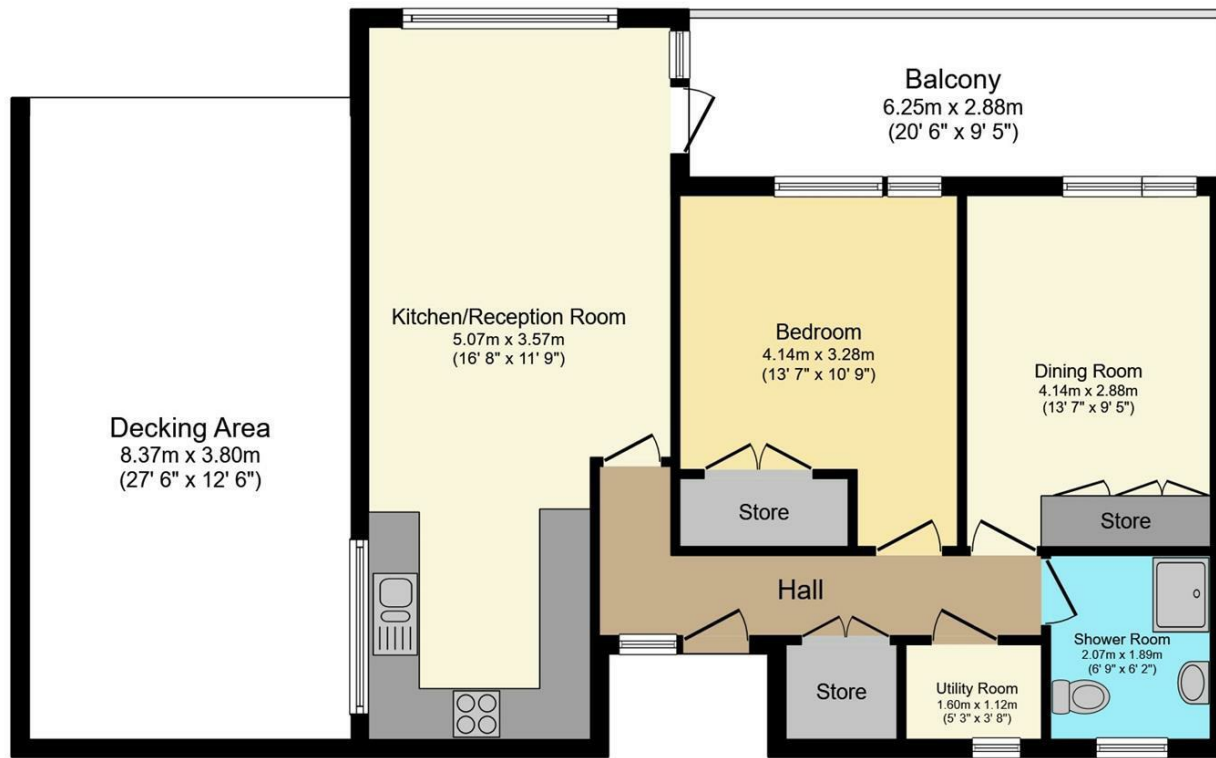
The Photographs

Please note: we have provided space for 48 photographs over the next four pages, but we may not fill all 48 spaces if we don't need to. If there are more than 48 photographs then we will email the remainder to you.



RE/MAX
PROPERTY HUB

Bungalow, 29 St Osyth Court, Barry, CF62 6RT



Floor Plan



Total floor area 67.9 sq.m. (731 sq.ft.) approx

This plan is for illustration purposes only and may not be representative of the property. Plan not to scale. Powered by PropertyBox



RE/MAX
PROPERTY HUB