

**Rowe
& Co.**



63 Ashdown Road, Chandler's Ford

Hampshire

£550,000

Rowe
& Co.

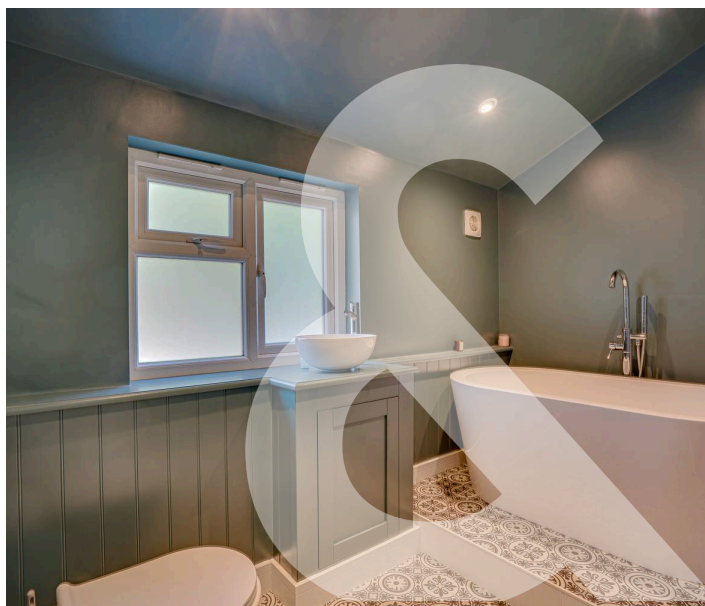


63 Ashdown Road

Chandler's Ford, Hampshire

This stunning four-bedroom family home has been thoughtfully extended and beautifully finished to a high standard throughout by the current owners. Ideally located in the ever-popular area of Hiltingbury, the property falls within the sought-after catchment areas for both Thornden and Hiltingbury schools. The ground floor offers spacious and versatile accommodation, comprising a welcoming entrance hall, a comfortable lounge, a family /study, and an impressive open-plan kitchen/dining/family room — perfect for modern living. There is also a practical utility room and a contemporary shower room. Upstairs, you'll find four generously sized bedrooms, including a luxurious principal suite with a walk-in wardrobe, and two well-appointed bathrooms. Outside, the property boasts a large driveway providing ample off-road parking and a secluded rear garden — ideal for entertaining or family relaxation. This is a rare opportunity to acquire a high-quality home in one of the area's most desirable locations.

Chandler's Ford is a highly sought-after Hampshire town offering a wide range of amenities, including shops, restaurants, and traditional public houses. The property falls within the catchment area for the well-regarded Scantabout Primary School and Thornden Secondary School, with several respected private schools also nearby. The town is ideally positioned for commuters and families alike, with Winchester just a 15-minute drive away and Southampton reachable in approximately 20 minutes—both cities offering extensive shopping, dining, and cultural facilities. Transport links are excellent, with easy access to the M3 and M27 motorways. Chandler's Ford railway station provides regular services to Winchester and Southampton, with London Waterloo accessible in approximately 57 minutes from Winchester and around 65 minutes from Southampton Parkway.



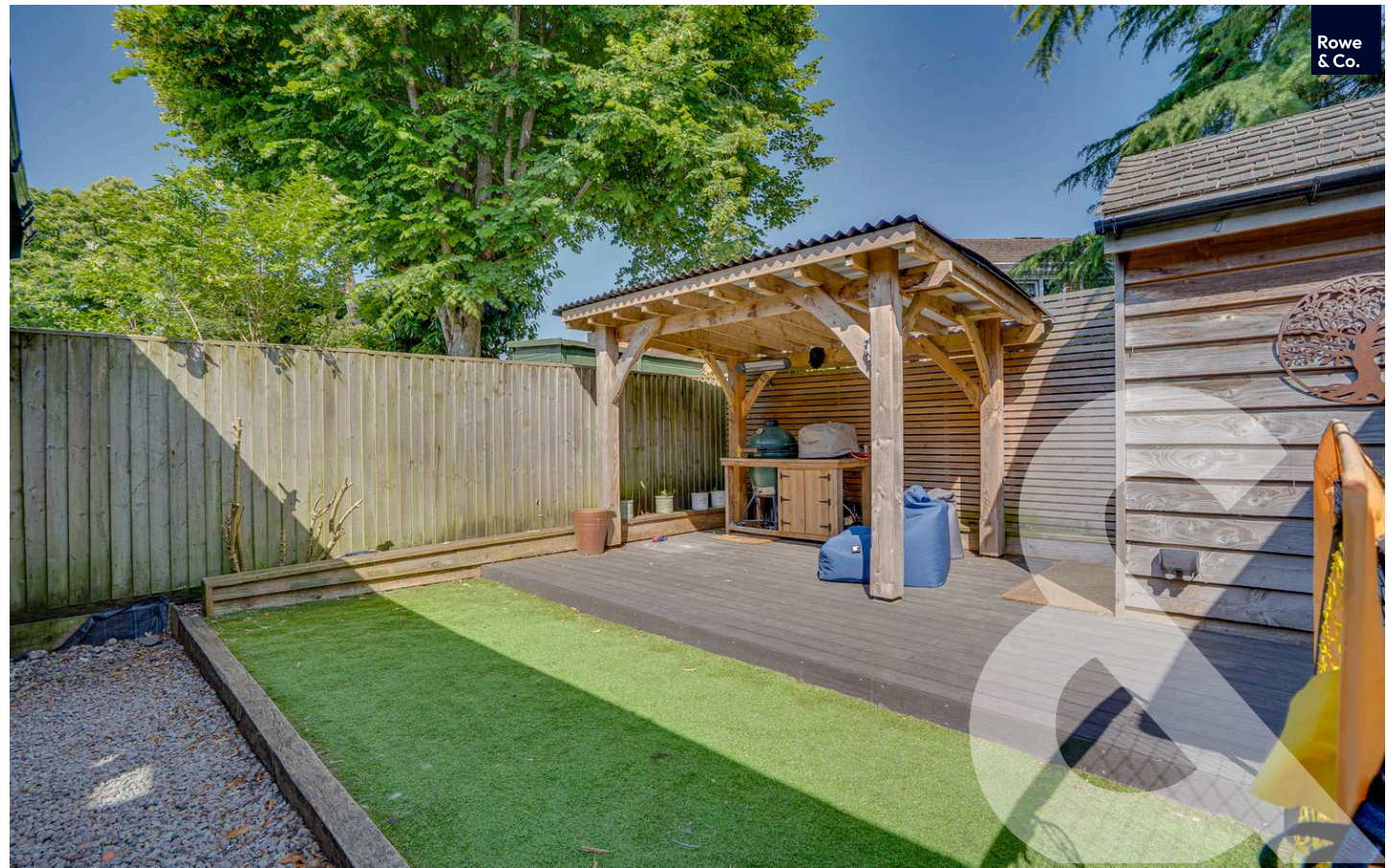
63 Ashdown Road

Chandler's Ford, Hampshire

Upon entering the property, you are welcomed into a spacious entrance hall featuring oak doors leading to all principal rooms and stairs rising to the first floor. To one side, a door opens into the family room/study, which benefits from a window to the front aspect, making it a bright and versatile space. Another door from the hallway leads into the lounge, a generously sized room with ample space for free-standing furniture, a front-facing window, and a connecting door through to the kitchen. The stunning 23ft kitchen is truly the heart of the home. Beautifully fitted with a contemporary grey shaker-style design and a central island, this impressive space offers both style and practicality. To one end, there is ample room for a large dining table and chairs, ideal for family gatherings or entertaining with bi folding doors leading to the rear garden. Additional doors lead to a useful utility room and a modern downstairs shower room. Upstairs, the property offers four well-proportioned bedrooms. The master bedroom benefits from an adjoining walk-in wardrobe and an en-suite bathroom. The remaining bedrooms are served by a stylish family bathroom, completing the first-floor accommodation.

To the front of the property, a large gravelled driveway provides ample parking for multiple vehicles. There is also an attractive area laid to lawn, complemented by a variety of planted shrubs, adding kerb appeal. The secluded rear garden is designed for low maintenance and enjoyment, featuring an artificial lawn, a decked seating area with a pergola — perfect for outdoor entertaining — as well as a large shed and a garden room, offering additional storage or flexible use.

- Four Bedrooms
- Large Driveway
- Three Bathrooms
- Two Reception Rooms
- Stunning Kitchen / Dining / Family Room
- Thornden & Hiltingbury School Catchment



63 Ashdown Road

Approximate Gross Internal Area
1658 sq ft - 154 sq m



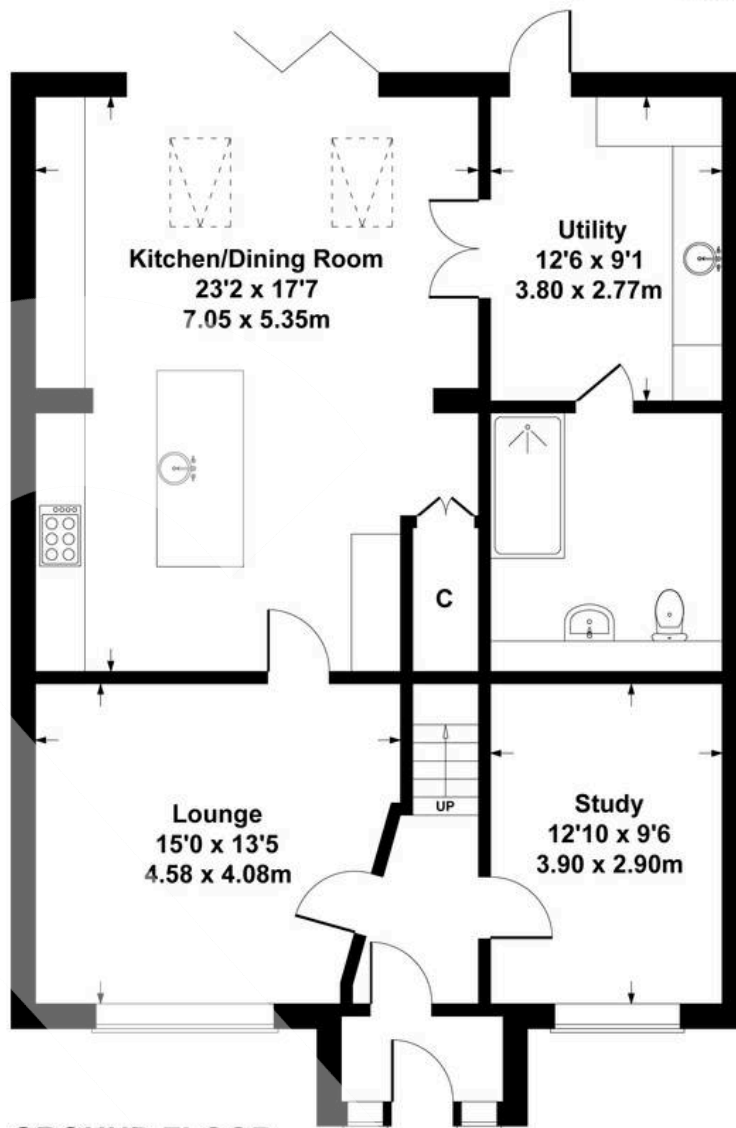
1 Rufus Court, 103 Winchester Road
Chandlers Ford,
SO53 2GG



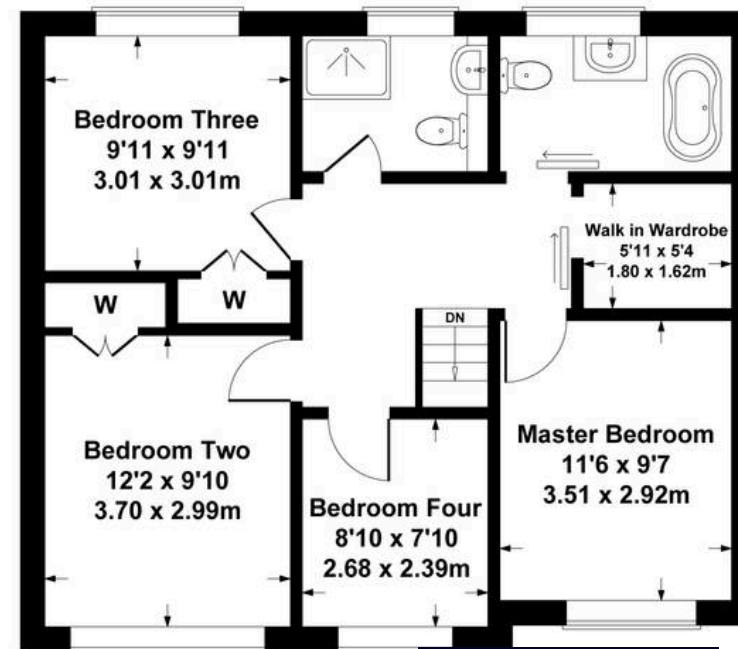
02381 102221



chandlersford@rowehomes.co.uk



GROUND FLOOR



FIRST FLOOR

Whilst every attempt has been made to ensure the accuracy of the floor plans measurements of doors windows rooms are approximate and no responsibility is taken for an error omission or mis-statement. These plans are for representation purposes only and should be used as such. The services systems and appliances listed in this specification have not been tested by Agency Assist and no guarantee as to their operating efficiency can be given.

**REQUEST
VIEWING**

(GOTTA BE QUICK!)

