

A three-story red brick house with white window frames and a large tree in the front garden. The house has a gabled roof with dormer windows. The front garden is green with a paved path and a small table and chairs. A large, leafless tree stands in the center of the garden. The sky is blue with some clouds.

**Rowe  
& Co.**

**4 Oaklands House 237 Hursley Road, Chandler's Ford**

Hampshire

**£215,000**



Rowe  
& Co.



## 4 Oaklands House 237 Hursley Road

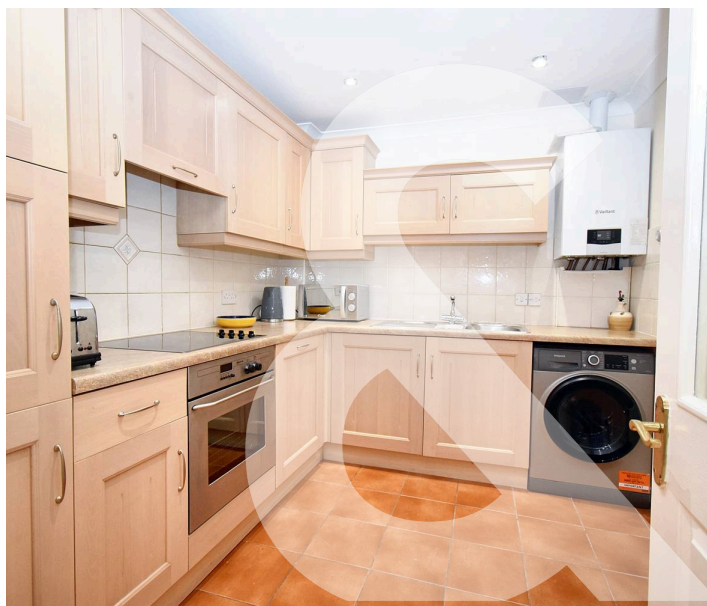
Hampshire

Offered with no forward chain is this ground floor two-bedroom apartment located centrally in Chandlers Ford. The accommodation comprises an entrance hall, kitchen, lounge / dining room, two bedrooms with en-suite to master and a modern shower room. Outside benefits two allocated parking spaces with a car port, mature communal grounds and a bin store. LOCATION Chandler's Ford is a popular Hampshire town with a variety of shops, restaurants, traditional inns and with Chilworth golf course also within easy reach. Schooling is typically excellent celebrating some of the best Ofsted ratings in the country and include Thornden & Toynbee secondary school alongside a selection of private schools. It is approximately a 15-minute drive to Winchester and a 17-minute drive to Southampton. Communications are excellent with the M3 and M27 nearby and the railway station has links to Winchester and Southampton; London Waterloo is 57 minutes from Winchester.

Council Tax band: C

Tenure: Leasehold

- No Forward Chain
- Two Allocated Parking Spaces
- Car Port
- Modern Shower Room & En-Suite
- Two Bedrooms
- Ground Floor





## 4 Oaklands House 237 Hursley Road

Hampshire

Offered with no forward chain is this ground floor two-bedroom apartment located centrally in Chandlers Ford. The accommodation comprises an entrance hall, kitchen, lounge / dining room, two bedrooms with en-suite to master and a modern shower room. Outside benefits two allocated parking spaces with a car port, mature communal grounds and a bin store. LOCATION Chandler's Ford is a popular Hampshire town with a variety of shops, restaurants, traditional inns and with Chilworth golf course also within easy reach. Schooling is typically excellent celebrating some of the best Ofsted ratings in the country and include Thornden & Toynbee secondary school alongside a selection of private schools. It is approximately a 15-minute drive to Winchester and a 17-minute drive to Southampton. Communications are excellent with the M3 and M27 nearby and the railway station has links to Winchester and Southampton; London Waterloo is 57 minutes from Winchester. Council Tax band: C

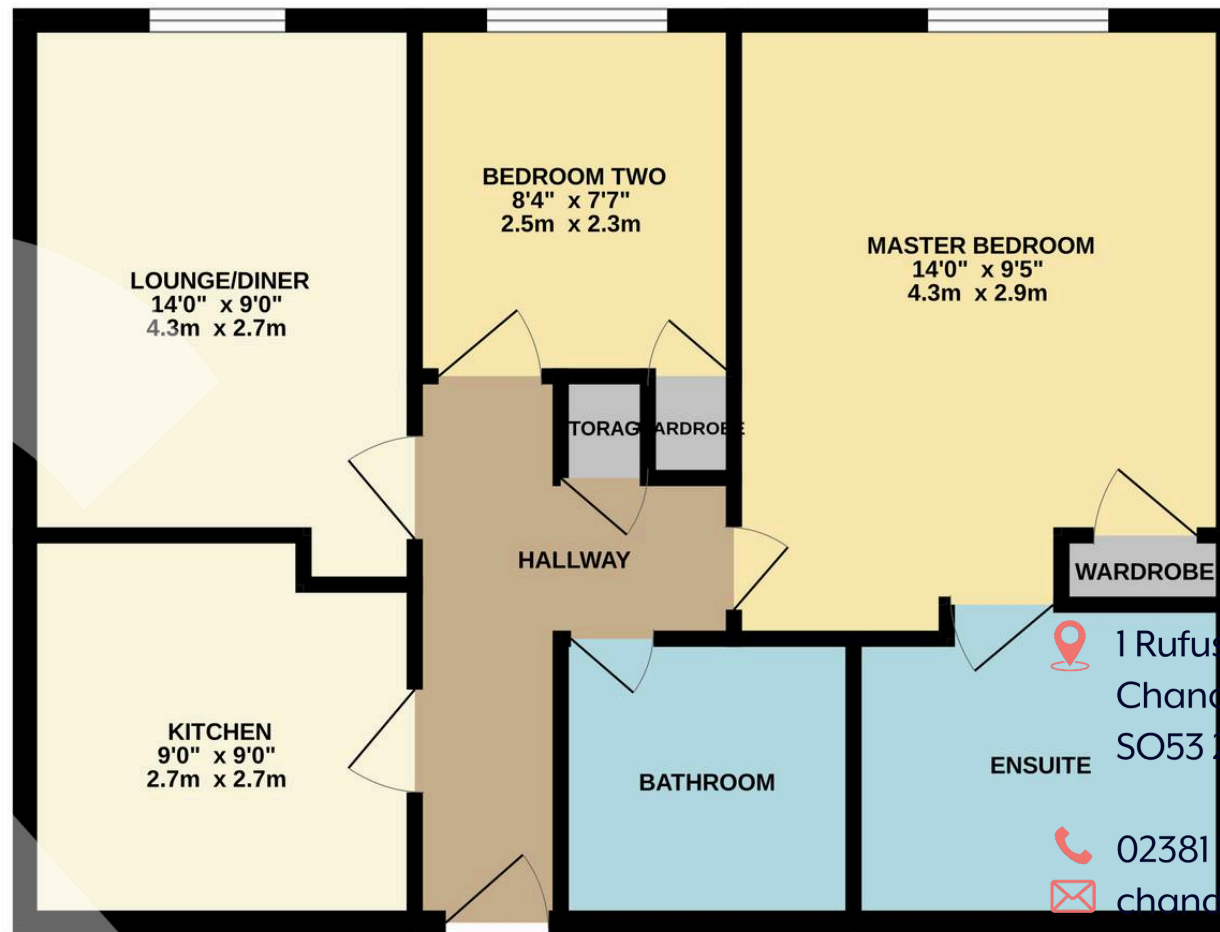
Tenure: Leasehold

- No Forward Chain
- Two Allocated Parking Spaces
- Car Port
- Modern Shower Room & En-Suite
- Two Bedrooms
- Ground Floor





## GROUND FLOOR



1 Rufus Court, 103 Winchester Road  
Chandlers Ford,  
SO53 2GG

02381 102221

chandlersford@rowehomes.co.uk

**REQUEST  
VIEWING**

(GOTTA BE QUICK!)

Whilst every attempt has been made to ensure the accuracy of the floorplan contained here, measurements of doors, windows, rooms and any other items are approximate and no responsibility is taken for any error, omission or mis-statement. This plan is for illustrative purposes only and should be used as such by any prospective purchaser. The services, systems and appliances shown have not been tested and no guarantee as to their operability or efficiency can be given.  
Made with Metropix ©2025

