



**Rowe  
& Co.**

**34 Kingsway, Chandler's Ford**

Eastleigh

In Excess of **£750,000**

Rowe  
& Co.



## 34 Kingsway

Chandler's Ford, Eastleigh

This deceptively spacious four bedroom detached home is situated in a convenient and highly desirable location within Hiltingbury and falls within Thornden school catchment. The property is located a short walk from Chander's Ford centre which provides pubs and shops including Waitrose. The property has been extended to provide accommodation including, on the ground floor a large entrance hall, sitting room, dining room, re-fitted kitchen, separate utility and a WC. On the first floor four good size double bedrooms and the master bedroom with e-suite along with the family bathroom. LOCATION Chandler's Ford is a popular Hampshire town with a variety of shops, restaurants and traditional public houses. Excellent local schools, alongside several well-regarded private schools. Approximately a 15-minute drive to Winchester and Southampton, both cities have an extensive range of facilities. Communications are excellent with the M3 and M27 nearby and the railway station has links to Winchester and Southampton; London Waterloo is 57 minutes from Winchester and 65 minutes from Southampton Parkway.

Council Tax band: E

Tenure: Freehold

EPC Energy Efficiency Rating: C

EPC Environmental Impact Rating: D

- Extended Detached Home
- Thornden School Catchment
- Desirable Hiltingbury location
- Established Location
- En-suite to Master bedroom
- Three further double bedrooms
- Kitchen with separate utility room



# 34 Kingsway

Chandler's Ford, Eastleigh

This deceptively spacious four bedroom detached home is situated in a convenient and highly desirable location within Hiltingbury and falls within Thornden school catchment. The property is located a short walk from Chander's Ford centre which provides pubs and shops including Waitrose. The property has been extended to provide accommodation including, on the ground floor a large entrance hall, sitting room, dining room, re-fitted kitchen, separate utility and a WC. On the first floor four good size double bedrooms and the master bedroom with e-suite along with the family bathroom. LOCATION Chandler's Ford is a popular Hampshire town with a variety of shops, restaurants and traditional public houses. Excellent local schools, alongside several well-regarded private schools. Approximately a 15-minute drive to Winchester and Southampton, both cities have an extensive range of facilities. Communications are excellent with the M3 and M27 nearby and the railway station has links to Winchester and Southampton; London Waterloo is 57 minutes from Winchester and 65 minutes from Southampton Parkway.

Council Tax band: E

Tenure: Freehold

EPC Energy Efficiency Rating: C

EPC Environmental Impact Rating: D

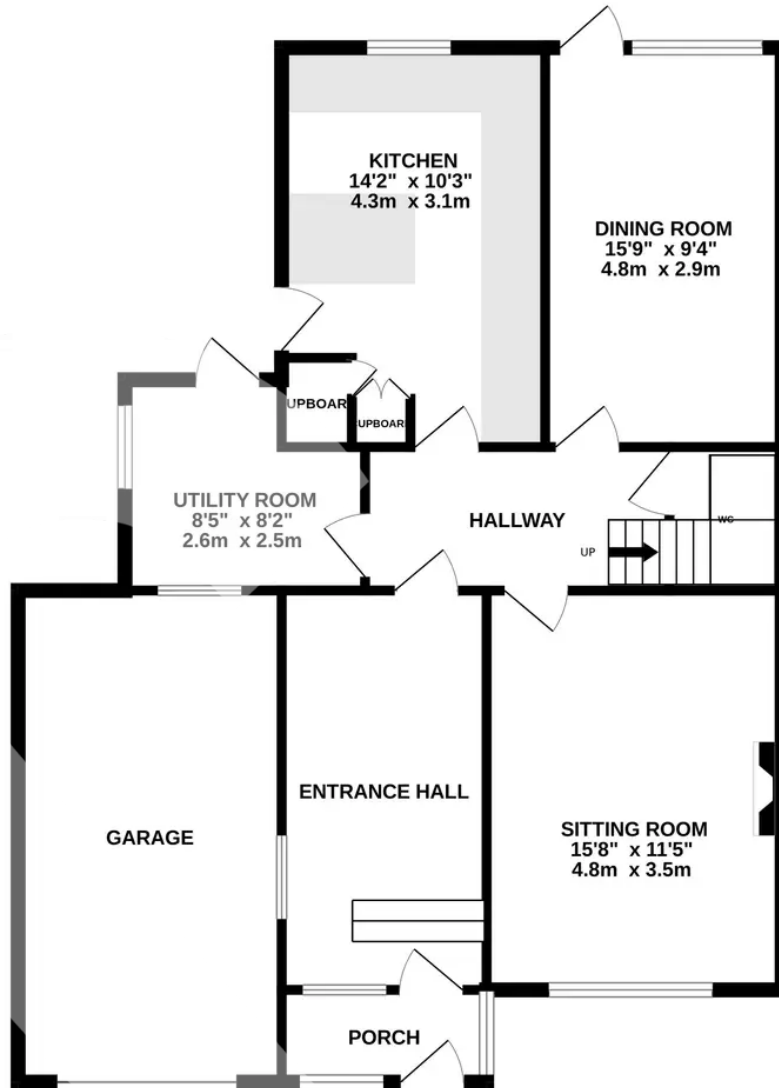
- Extended Detached Home
- Thornden School Catchment
- Desirable Hiltingbury location
- Established Location
- En-suite to Master bedroom
- Three further double bedrooms
- Kitchen with separate utility room
- Garage and large driveway



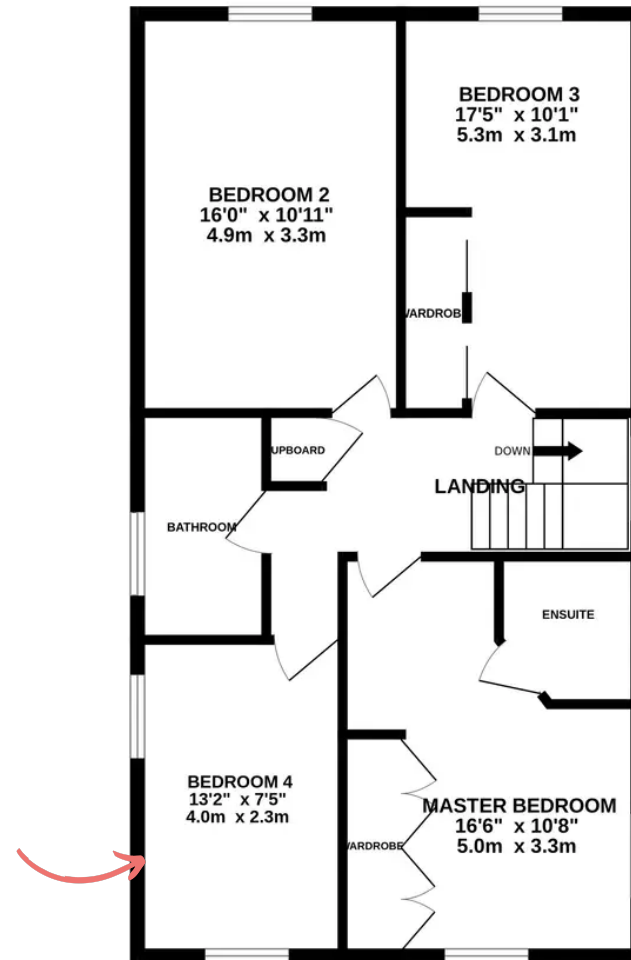
Rowe & Co.



GROUND FLOOR



1ST FLOOR



Whilst every attempt has been made to ensure the accuracy of the floorplan contained here, measurements of doors, windows, rooms and any other items are approximate and no responsibility is taken for any error, omission or mis-statement. This plan is for illustrative purposes only and should be used as such by any prospective purchaser. The services, systems and appliances shown have not been tested and no guarantee as to their operability or efficiency can be given.  
Made with Metropix ©2024

**REQUEST  
VIEWING**

(GOTTA BE QUICK!)

