



**Rowe
& Co.**

Meadow Lodge Telegraph Road, West End

Southampton

In Excess of **£780,000**



Meadow Lodge Telegraph Road

West End, Southampton

This truly stunning, five bedroom detached family home is situated on an established plot with a large frontage in one of West end's prime locations. The property offers spacious accommodation throughout and on the ground floor comprises a large entrance hall, 22ft sitting room, spacious dining room, stunning 23ft kitchen breakfast/family room, utility and cloakroom. On the first floor there are five double bedrooms, with en-suite to the Master bedroom, and a modern shower room. The property benefits from a detached double garage which has been converted to provide storage and there is a beautiful rear garden.

LOCATION The property is located in West End and benefits from being close to local shops and amenities. The Ageas Bowl, David Lloyd Leisure Centre and the M27 motorway links are also close by. The high street hosts an excellent variety of local shops and there is a good choice of popular schools for all ages. Itchen Valley Country Park, whilst Manor Farm Country Park enjoys walks along the Hamble River. The nearby retail park offers superb "out of town" shopping and the nearby Ageas Bowl is the home of Hampshire cricket, hosting international matches and live music events.

Council Tax band: F

Tenure: Freehold

- Five Double Bedrooms
- EPC - Ordered
- En-Suite To Master
- Telegraph Wood Location
- 22ft Sitting Room
- Modern Kitchen / Dining / Family Room
- Detached Double Garage
- Large Established Plot
- Large Frontage With Gated Driveway



Meadow Lodge Telegraph Road

West End, Southampton

This truly stunning, five bedroom detached family home is situated on an established plot with a large frontage in one of West end's prime locations. The property offers spacious accommodation throughout and on the ground floor comprises a large entrance hall, 22ft sitting room, spacious dining room, stunning 23ft kitchen breakfast/family room, utility and cloakroom. On the first floor there are five double bedrooms, with en-suite to the Master bedroom, and a modern shower room. The property benefits from a detached double garage which has been converted to provide storage and there is a beautiful rear garden. LOCATION The property is located in West End and benefits from being close to local shops and amenities. The Ageas Bowl, David Lloyd Leisure Centre and the M27 motorway links are also close by. The high street hosts an excellent variety of local shops and there is a good choice of popular schools for all ages. Itchen Valley Country Park, whilst Manor Farm Country Park enjoys walks along the Hamble River. The nearby retail park offers superb "out of town" shopping and the nearby Ageas Bowl is the home of Hampshire cricket, hosting international matches and live music events.

Council Tax band: F

Tenure: Freehold

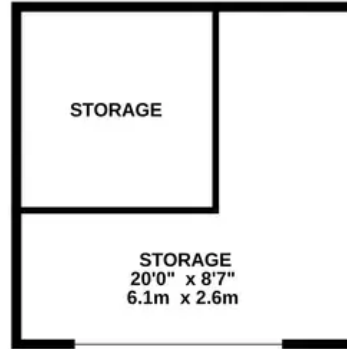
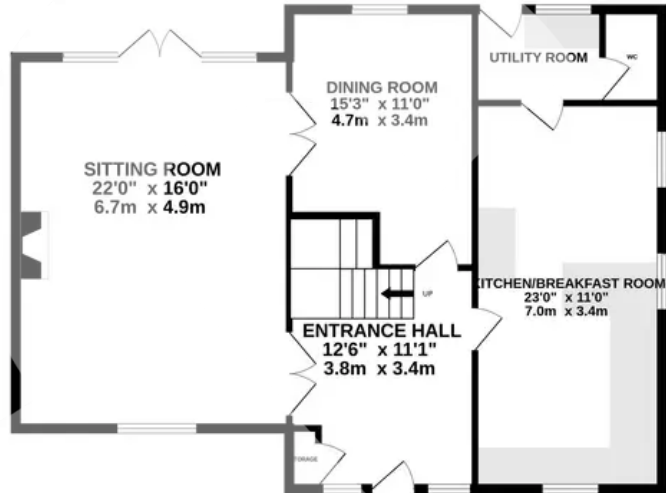
- Five Double Bedrooms
- EPC - Ordered
- En-Suite To Master
- Telegraph Wood Location
- 22ft Sitting Room
- Modern Kitchen / Dining / Family Room
- Detached Double Garage
- Large Established Plot
- Large Frontage With Gated Driveway



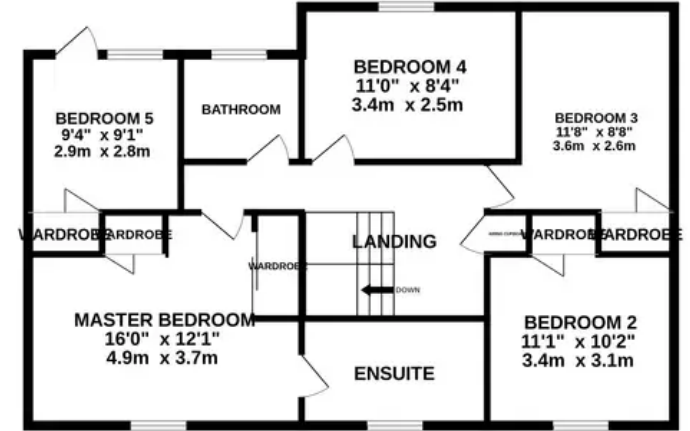
Rowe
& Co.



GROUND FLOOR



1ST FLOOR



Whilst every attempt has been made to ensure the accuracy of the floorplan contained here, measurements of doors, windows, rooms and any other items are approximate and no responsibility is taken for any error, omission or mis-statement. This plan is for illustrative purposes only and should be used as such by any prospective purchaser. The services, systems and appliances shown have not been tested and no guarantee as to their operability or efficiency can be given.
Made with Metropix ©2024

**REQUEST
VIEWING**

(GOTTA BE QUICK!)

