



**Rowe
& Co.**

42 Carlyn Drive, Chandler's Ford
Eastleigh

£539,000

Rowe
& Co.



42 Carlyn Drive

Chandler's Ford, Eastleigh

This wonderful four-bedroom detached home is set in a quiet cul-de-sac and only a short distance to the centre of Chandlers Ford. Accommodation to the ground floor comprises an entrance hall, lounge, 26ft kitchen / dining room, store/study and W/C. On the first floor are four well-proportioned bedrooms with en-suite to master and family bathroom. Outside has a large frontage with driveway and a secluded south facing rear garden. LOCATION Chandler's Ford is a popular Hampshire town with a variety of shops, restaurants and traditional public houses. The local catchment schools are Fryern Infant & Junior and Toyne Secondary school, alongside several well-regarded private schools. Approximately a 15-minute drive to Winchester and a 17-minute drive to Southampton, both cities have an extensive range of facilities. Communications are excellent with the M3 and M27 nearby and the railway station has links to Winchester and Southampton; London Waterloo is 57 minutes from Winchester and 65 minutes from Southampton Parkway. Council Tax band: E

Tenure: Freehold

EPC Energy Efficiency Rating: C

EPC Environmental Impact Rating: D

- Catchment To Popular Local Schools
- South Facing Rear Garden
- En-Suite To Master
- Garage & Driveway
- Four Well Proportioned Bedrooms
- 26ft Kitchen / Dining Room
- Ground Floor W/C
- Close To Local Amenities



42 Carlyn Drive

Chandler's Ford, Eastleigh

This wonderful four-bedroom detached home is set in a quiet cul-de-sac and only a short distance to the centre of Chandlers Ford. Accommodation to the ground floor comprises an entrance hall, lounge, 26ft kitchen / dining room, store/study and W/C. On the first floor are four well-proportioned bedrooms with en-suite to master and family bathroom. Outside has a large frontage with driveway and a secluded south facing rear garden. LOCATION Chandler's Ford is a popular Hampshire town with a variety of shops, restaurants and traditional public houses. The local catchment schools are Fryern Infant & Junior and Toynbee Secondary school, alongside several well-regarded private schools. Approximately a 15-minute drive to Winchester and a 17-minute drive to Southampton, both cities have an extensive range of facilities. Communications are excellent with the M3 and M27 nearby and the railway station has links to Winchester and Southampton; London Waterloo is 57 minutes from Winchester and 65 minutes from Southampton Parkway. Council Tax band: E

Tenure: Freehold

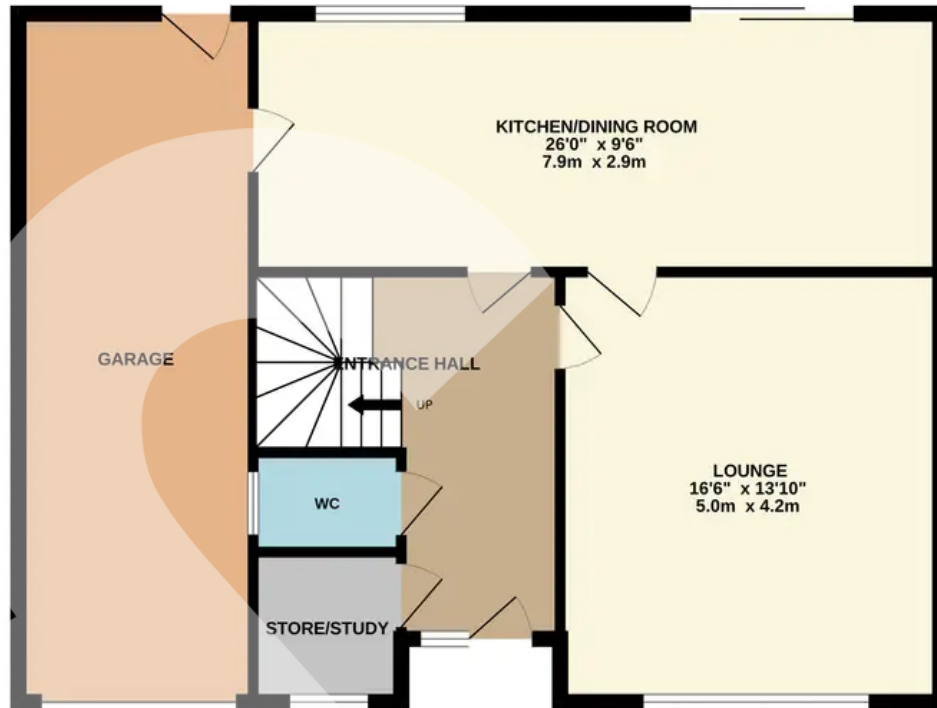
EPC Energy Efficiency Rating: C

EPC Environmental Impact Rating: D

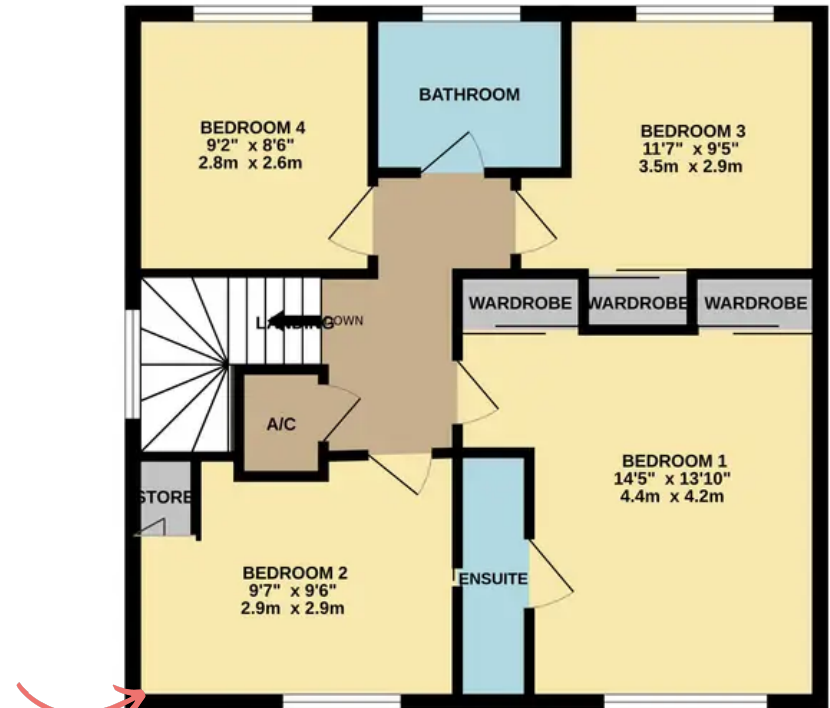
- Catchment To Popular Local Schools
- South Facing Rear Garden
- En-Suite To Master
- Garage & Driveway
- Four Well Proportioned Bedrooms
- 26ft Kitchen / Dining Room
- Ground Floor W/C
- Close To Local Amenities



GROUND FLOOR



1ST FLOOR



Whilst every attempt has been made to ensure the accuracy of the floorplan contained here, measurements of doors, windows, rooms and any other items are approximate and no responsibility is taken for any error, omission or mis-statement. This plan is for illustrative purposes only and should be used as such by any prospective purchaser. The services, systems and appliances shown have not been tested and no guarantee as to their operability or efficiency can be given.
Made with Metropix ©2024

**REQUEST
VIEWING**

(GOTTA BE QUICK!)

