



**Rowe
& Co.**

15 Lakewood Road, Chandler's Ford

Eastleigh

Guide Price **£1,250,000**

Rowe
& Co.



15 Lakewood Road

Chandler's Ford, Eastleigh

****NO FORWARD CHAIN**** An exquisite example of a substantial four bedroom detached home, situated on a prestigious road within Hiltingbury. The property boasts high-quality fixtures and fittings, with modern interiors which are a showcase of refined craftsmanship and offers a blend of elegance, comfort, and practicality, creating an idyllic residence for a family. Ground floor accommodation comprises a spacious entrance hall, 29ft lounge, family room, study, modern kitchen / dining room, utility and cloakroom. On the first floor are four well-proportioned double bedrooms including a wonderful master suite and three bathrooms featuring two en-suites. Outside benefits a spacious driveway accommodating parking for multiple vehicles with a secluded mature garden to the rear. We anticipate a high level of interest and early viewing comes highly recommended. LOCATION Chandler's Ford is a popular Hampshire town with a variety of shops, restaurants and traditional public houses. The local catchment schools are Hiltingbury Infant and Junior and the sought-after Thornden Secondary school, alongside several well-regarded private schools. Approximately a 15-minute drive to Winchester and a 17-minute drive to Southampton, both cities have an extensive range of facilities. Communications are excellent with the M3 and M27 nearby and the railway station has links to Winchester and Southampton; London Waterloo is 57 minutes from Winchester and 65 minutes from Southampton Parkway. Council Tax band: G

Tenure: Freehold

EPC Energy Efficiency Rating: C

EPC Environmental Impact Rating: C

- Thornden School Catchment



15 Lakewood Road

Chandler's Ford, Eastleigh

****NO FORWARD CHAIN**** An exquisite example of a substantial four bedroom detached home, situated on a prestigious road within Hiltingbury. The property boasts high-quality fixtures and fittings, with modern interiors which are a showcase of refined craftsmanship and offers a blend of elegance, comfort, and practicality, creating an idyllic residence for a family. Ground floor accommodation comprises a spacious entrance hall, 29ft lounge, family room, study, modern kitchen / dining room, utility and cloakroom. On the first floor are four well-proportioned double bedrooms including a wonderful master suite and three bathrooms featuring two en-suites. Outside benefits a spacious driveway accommodating parking for multiple vehicles with a secluded mature garden to the rear. We anticipate a high level of interest and early viewing comes highly recommended. LOCATION Chandler's Ford is a popular Hampshire town with a variety of shops, restaurants and traditional public houses. The local catchment schools are Hiltingbury Infant and Junior and the sought-after Thornden Secondary school, alongside several well-regarded private schools. Approximately a 15-minute drive to Winchester and a 17-minute drive to Southampton, both cities have an extensive range of facilities. Communications are excellent with the M3 and M27 nearby and the railway station has links to Winchester and Southampton; London Waterloo is 57 minutes from Winchester and 65 minutes from Southampton Parkway. Council Tax band: G

Tenure: Freehold

EPC Energy Efficiency Rating: C

EPC Environmental Impact Rating: C

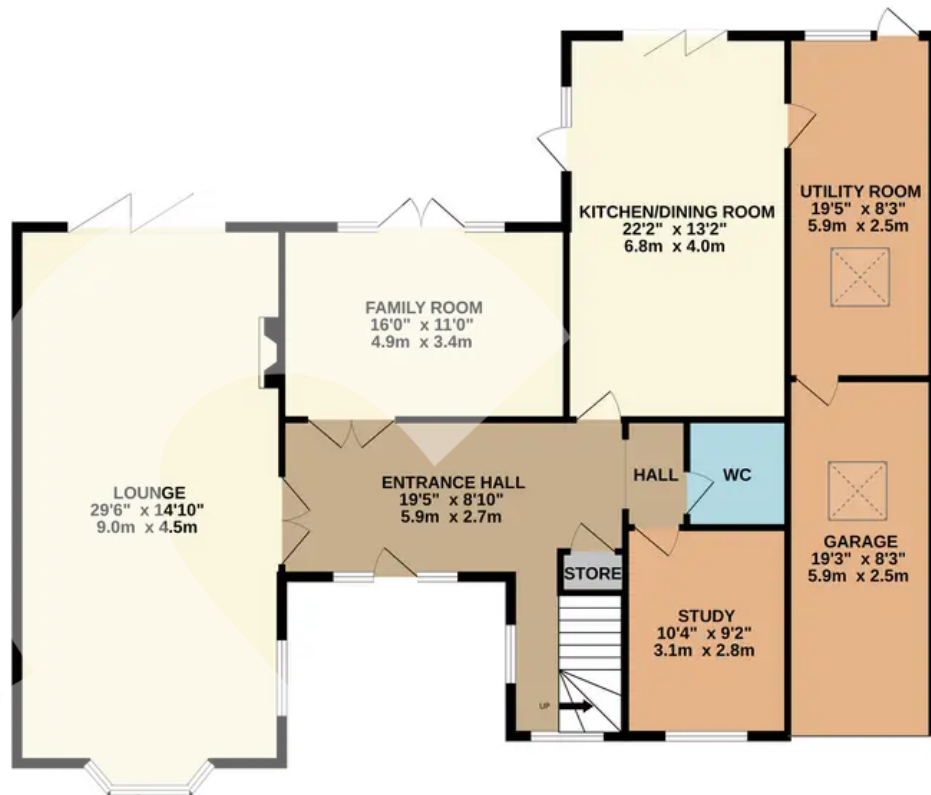
- Thornden School Catchment
- Secluded Mature Gardens
- Incredible Four Bedroom Family Residence
- Sought-After Location
- Incredible Master Suite



Rowe
& Co.



GROUND FLOOR



1ST FLOOR



Whilst every attempt has been made to ensure the accuracy of the floorplan contained here, measurements of doors, windows, rooms and any other items are approximate and no responsibility is taken for any error, omission or mis-statement. This plan is for illustrative purposes only and should be used as such by any prospective purchaser. The services, systems and appliances shown have not been tested and no guarantee as to their operability or efficiency can be given.
Made with Metropix ©2024

**REQUEST
VIEWING**

(GOTTA BE QUICK!)

