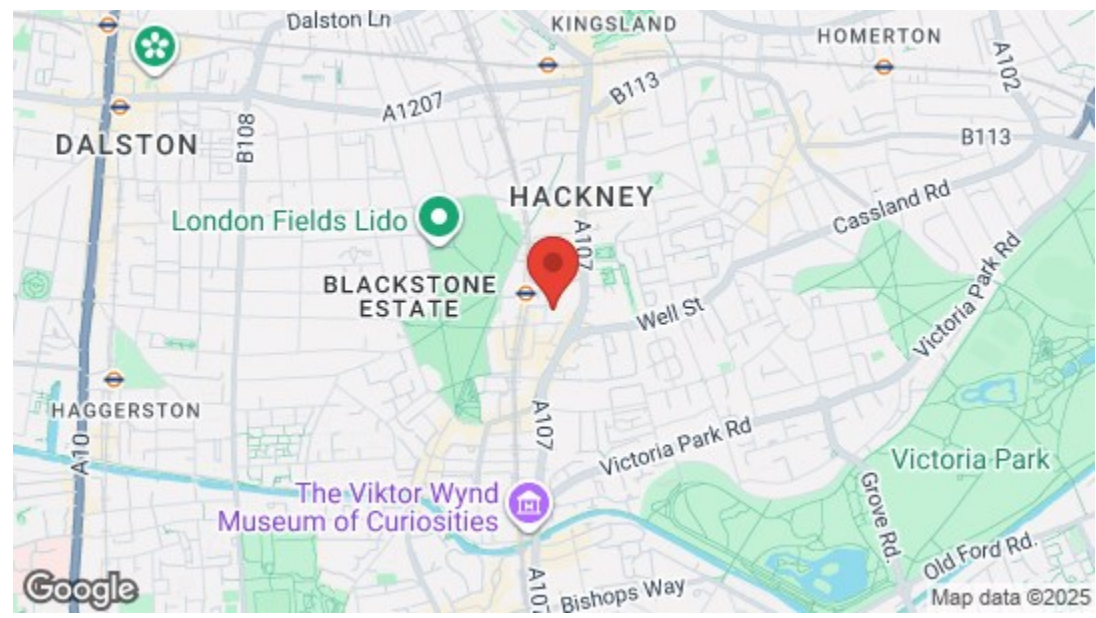


Third Floor

Total Area: 53.4 m<sup>2</sup> ... 574 ft<sup>2</sup> (excluding balcony)  
All measurements are approximate and for display purposes only.



Energy Efficiency Rating		
	Current	Potential
Very energy efficient - lower running costs		
(92-plus) A		
(81-91) B	81	81
(69-80) C		
(55-68) D		
(39-54) E		
(21-38) F		
(1-20) G		
Not energy efficient - higher running costs		
England & Wales	EU Directive 2002/91/EC	



Gransden Avenue, Hackney  
£3,500 Per Month  
1 bed, Flat

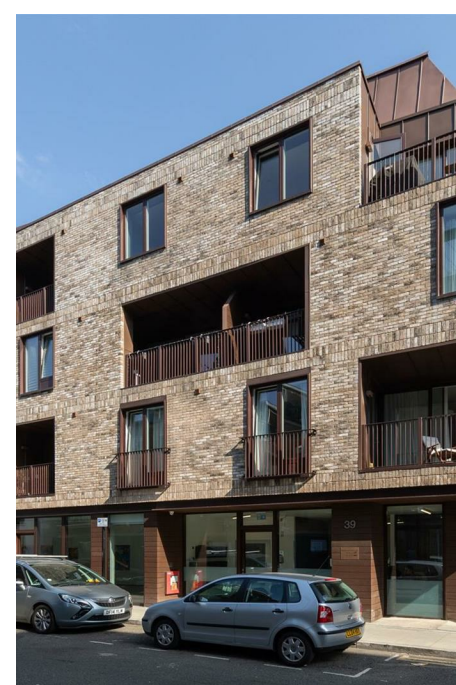
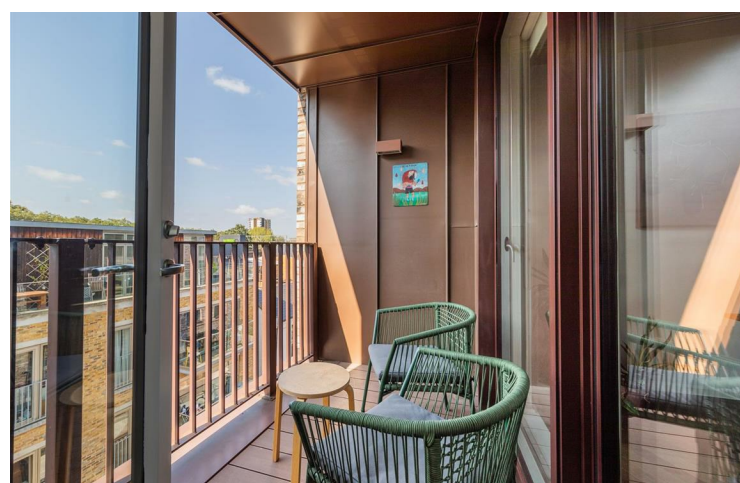
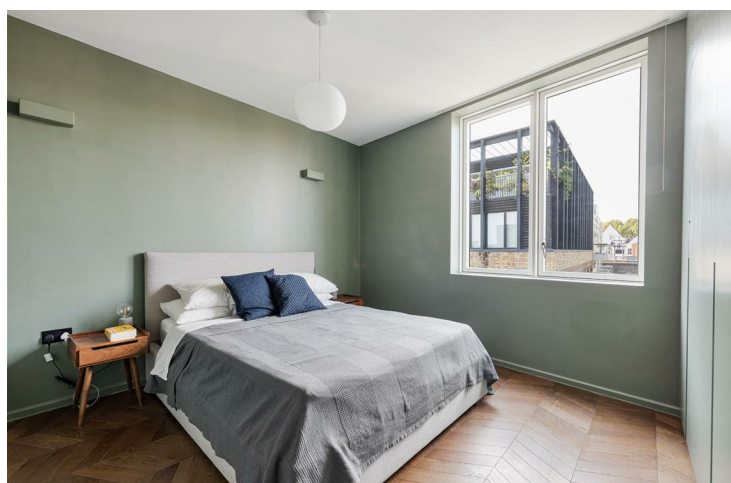






## Features

- Short Let
- Elegant Modern One Bedroom Apartment
- Private balcony
- Concierge
- Amongst Popular Restaurants & Cafes
- Moments From London Fields



## WHAT ELSE?

- Keep fit at Flow and the Dane, a friendly Pilates and tango studio, four minutes from your home.
- Catch a performance at Hackney Empire, a restored theatre, hosting a wide array of unique shows from pantomime to comedy.
- You're only a seven minute walk from Netil House, a vibrant coworking space featuring a lively rooftop lounge with weekend live music and a great atmosphere.









## ➡ IF YOU LIVED HERE:

Upon entering your third floor apartment, you'll appreciate the seamless flow between rooms. To your right, the kitchen and reception area, finished in pristine white, stretch across 275 square feet of versatile open space, perfect for both daily living and entertaining. The rich walnut herringbone flooring creates a striking contrast with the walls, while pendant lighting adds an elegant touch. The kitchen features ample panelled white cabinetry, an integrated fridge and freezer, and smart storage solutions. There's also that private balcony, an ideal retreat for relaxing outdoors in the comfort of home.

Just across the hall, the generous bathroom showcases a sleek black and white theme with grey porcelain metro tiles. Industrial brass fixtures add a touch of modernity, and the chessboard black and white floor tiles add some artistic flair. Unwind in the spacious tub or enjoy a refreshing rainfall shower overhead. Your bedroom, surrounded by sage green, is flooded with natural light through a spacious window and features three attached and integrated wardrobes, as well as integrated shelving.

Step outside to discover an abundance of green spaces, various wineries and eateries, and independent cafes. For your morning coffee or brunch, head to Finch Cafe or Restaurant, just a five minute walk away. In the evening, enjoy modern European small plates at Papi Restaurant, also within easy reach. The London Fields arches offer a range of options, including The Snarpery East bakery and Brat x Climpson's Arch for seasonal dishes. For a quick and tasty sandwich, Bread and Truffle is the perfect spot. Enjoy evening runs and dog walks at London Fields, just five minutes away, or explore expansive Victoria Park, a fifteen minute walk from your door.

