

Kitchen/ Lounge/ Diner
20'10" x 14'9"

Balcony

Bedroom
12'5" x 9'8"

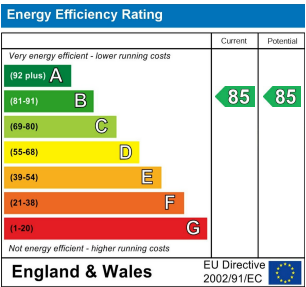
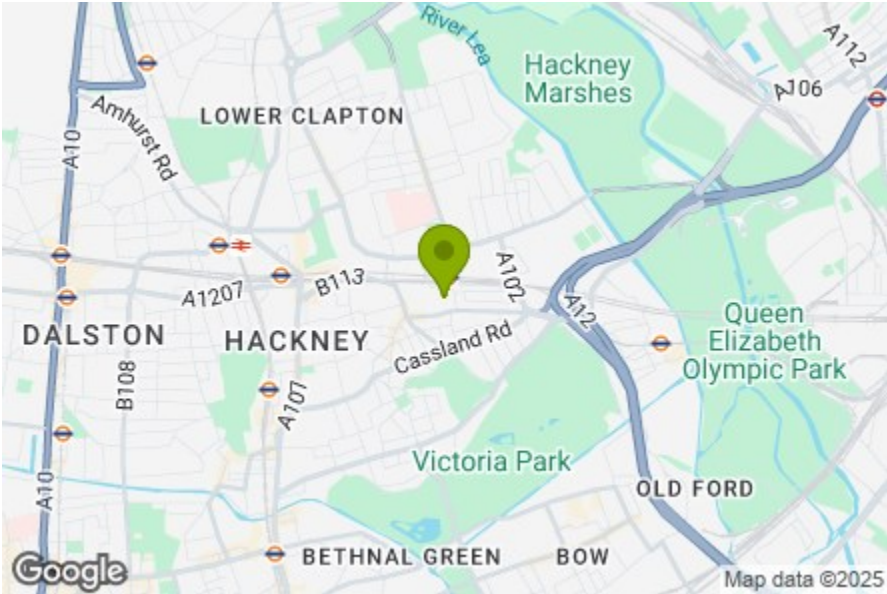
Balcony

Bedroom
10'7" x 14'9"

Bathroom
7'11" x 9'8"

Total Area (Excluding Balcony): 77.2 m² ... 831 ft²

Whilst every attempt has been made to ensure the accuracy of the floor plan contained here, measurements of doors, windows, rooms and any other items are approximate and no responsibility is taken for any error, omission, or mis-statement. This plan is for illustrative purposes only and should be used as such by any prospective purchaser. The services, systems and appliances shown have not been tested and no guarantee as to their operability or efficiency can be given.



DALEY STREET, HOMERTON

Offers In Excess Of £600,000 Leasehold
2 Bed Apartment - Purpose Built



Features:

- Two Bedroom Apartment
- First Floor
- Just Under 850 sq.ft
- Two South Facing Balconies
- Beautifully Presented Throughout
- Moments Away from Homerton Station

A bright and beautifully finished two-bedroom apartment set on the first floor of a modern development, which is perfectly positioned between Homerton, with Hackney Central as short hop further. This enviable location places an exceptional range of amenities and excellent transport links right on your doorstep.

Inside, the apartment is thoughtfully designed and immaculately presented. The spacious open-plan living area is flooded with natural light, while two private south-facing balconies offer the perfect spots to relax. Additional highlights include generous built-in storage, immaculate decor, and access to a well-maintained communal terrace. It's all beautifully finished and ready to be enjoyed.

REQUEST A VIEWING
0208 520 3077

E11, E7, E12 & E15
hello11@stowbrothers.com
0203 397 2222

E4 & N17
hello4@stowbrothers.com
0203 369 6444

E17 & E10
hello17@stowbrothers.com
0203 397 9797

E18 & IG8
hello18@stowbrothers.com
0203 369 1818

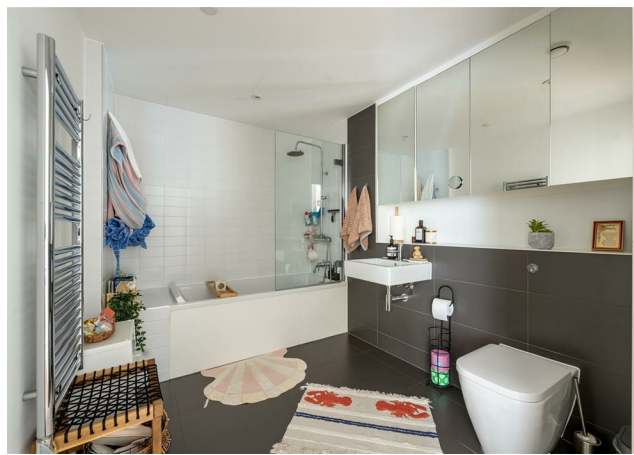
E8, E9, E5, N16, E3 & E2
hellohackney@stowbrothers.com
0208 520 3077

New Homes
newhomes@stowbrothers.com
0203 325 7227

Investment & Development
id@stowbrothers.com
0208 520 6220

Property Maintenance
propertymanagement@stowbrothers.com
0203 325 7228

STOWBROTHERS.COM
@STOWBROTHERS



REQUEST A VIEWING
0208 520 3077

IF YOU LIVED HERE...

Offering nearly 850 square feet of living space, this generously proportioned apartment combines size, style, and a superb East London location. With thoughtful finishes throughout, moving in will feel instantly effortless.

The dual-aspect open-plan living space is bathed in natural light, thanks to large windows that show off the warm timber floors and sleek decor. There's ample room here to both relax and entertain, while the contemporary kitchen - complete with integrated appliances and smart units - makes cooking a joy.

Both bedrooms are well-sized and immaculately presented, with soft carpeting and modern design. The bathroom is equally impressive, featuring a roomy over-tub shower and excellent built-in storage - ideal for busy mornings.

Step outside and you're in the heart of a lively and well-connected area. From the energy of Hackney Central to the buzzing spots along Chatsworth Road and Lower Clapton Road, everything you need is close at hand.

Transport is plentiful in this area with some excellent bus routes nearby, as well

as Homerton station, which is served by the Mildmay Overground route, where you can easily access the tube at Stratford or Highbury & Islington. Hackney Central station is just 18 minutes on foot for even more options.

WHAT ELSE?

- You're spoilt for choice when it comes to movie nights. The Hackney Picturehouse is just 15 minutes away on foot and has a brilliant selection of blockbusters and indies alike, as well as a great cafe bar, while the much-loved Castle Cinema is 10 minutes in the other direction.
- Despite all the urban buzz, this area has a surprisingly large amount of green space. Hackney Marshes, London Fields and Victoria Park are all strolling distance, with the latter home to some internationally renowned festivals including All Points East Festival and Field Day.
- If you want to ramp up your nightlife, you'll be delighted to find that MOTH club and Oslo are close by - two excellent live music venues.



A WORD FROM THE OWNER...

"Living here has been an absolute joy—it's perfectly placed to enjoy the best of East London while being surrounded by green spaces. Victoria Park is just around the corner, along with the charming Victoria Park Village, which offers a great mix of pubs, independent cafes, and boutique shops. Homerton High Street has become a hub for exciting new openings, adding a fresh and trendy vibe to the neighbourhood. Hackney Central, London Fields, and Broadway Market are all within a 15-minute walk, offering everything from vibrant markets to a buzzing food and nightlife scene. Hackney Marshes and Millfields Park are also nearby, perfect for morning runs, dog walks, or just unwinding in nature. What makes this area truly special is its balance—it's ideal for young professionals, creatives, and new families alike. The neighbourhood offers something for every taste, with a genuine sense of community and plenty of opportunities to connect. The Overground (Mildmay line) is just a 2-minute walk away, making commuting easy. Hackney Wick is close by for nights out, and Queen Elizabeth Olympic Park is only two stops away, giving access to the Olympic pool and a range of other top-class facilities."

FOLLOW US ➡ @STOWBROTHERS
STOWBROTHERS.COM