



DALSTON SQUARE, DALSTON JUNCTION

Offers In Excess Of £550,000 Leasehold
2 Bed Flat

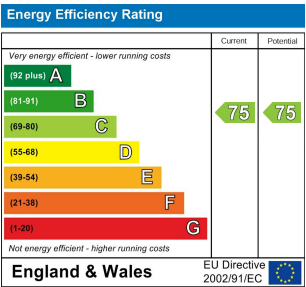
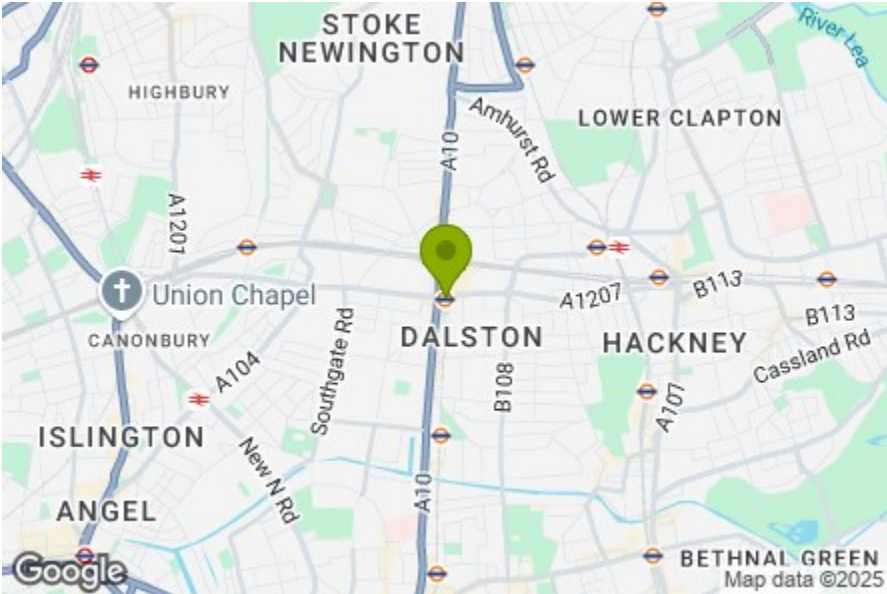


Features:

- Dalston Square
- Two Bedroom Apartment
- Two Bathrooms
- Just under 700 sq.ft
- Concierge
- Residents' Gym

If you thrive on the buzz of city living, this fantastic two-bedroom apartment puts you right in the thick of it, in one of London's most vibrant neighbourhoods. Just a stone's throw from Dalston Station and with buses on your doorstep, you'll have easy access to Shoreditch, Islington, the City, and all the cafes, bars, and shops along Kingsland Road. Spanning 691 sq ft, the apartment offers bright, flexible living space with two bedrooms and two bathrooms, all presented in good decorative order. Residents also benefit from a 24-hour concierge, a private gym, and a large communal rooftop — perfect for catching up with neighbours or watching the sun set over the City skyline.

REQUEST A VIEWING
0208 520 3077



E11, E7, E12 & E15
hello11@stowbrothers.com
0203 397 2222

E4 & N17
hello4@stowbrothers.com
0203 369 6444

E17 & E10
hello17@stowbrothers.com
0203 397 9797

E18 & IG8
hello18@stowbrothers.com
0203 369 1818

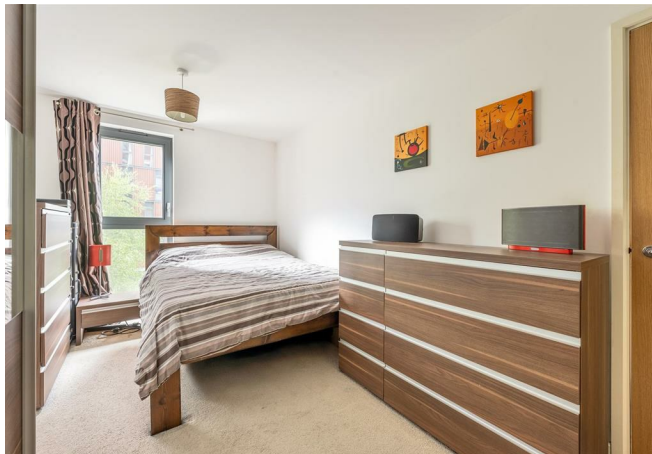
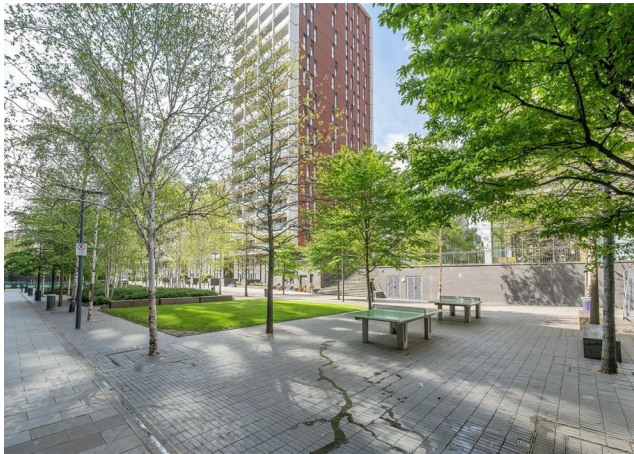
E8, E9, E5, N16, E3 & E2
hellohackney@stowbrothers.com
0208 520 3077

New Homes
newhomes@stowbrothers.com
0203 325 7227

Investment & Development
id@stowbrothers.com
0208 520 6220

Property Maintenance
propertymanagement@stowbrothers.com
0203 325 7228

STOWBROTHERS.COM
@STOWBROTHERS



REQUEST A VIEWING
0208 520 3077

IF YOU LIVED HERE...

Part of the sought-after Dalston Square development in Hackney, E8, Thomas Tower offers an unbeatable location right in the heart of one of London's most exciting neighbourhoods.

Step inside and you're welcomed by two generous storage cupboards – perfect for keeping coats, shoes, and everyday essentials neatly out of sight. To your right, the first bathroom features a full-length bath, a smart white suite, a wide mirror, and a built-in cupboard to help keep surfaces clutter-free.

Follow the flow of pale engineered wood flooring down the hallway and into your reception room, where there's plenty of space to stretch out on a comfy sofa or gather around a dining table with family and friends. Thanks to two large windows and a sunny southwesterly aspect, the room is bathed in natural light all day long.

The kitchen, tucked neatly to one side but open enough to feel part of the space, is fitted with streamlined charcoal cabinetry and quality integrated appliances, including a microwave, all arranged in a smart U-shape for easy cooking and entertaining.

There are two double bedrooms, both softly carpeted and filled with light from their large windows. The main bedroom also benefits from an en suite with a walk-in

shower for extra convenience.

As a resident, you'll also have access to a large communal rooftop terrace – an amazing spot edged with flowers and shrubs in which to unwind, take in sweeping City views, and enjoy a sunset drink with neighbours or envious guests.

WHAT ELSE?

- Dalston is a vibrant and well-connected hub in East London, brimming with standout places of interest. Hackney Downs and Dalston Kingsland stations are both less than a 10-minute walk away, offering swift Overground links to central London and beyond, while an array of bus routes ensures accessible travel day and night.
- Ridley Road Market is a bustling destination for fresh produce, international street food, and eclectic shopping finds. Kingsland High Street, nearby, boasts a diverse range of eateries and entertainment options. Highlights include Café Route, renowned for its hearty brunches, and Jones & Sons, a go-to spot for sophisticated evening dining. Residents also enjoy the convenience of local supermarkets like Tesco Express and Sainsbury's Local.
- For outdoor enthusiasts, Hackney Downs Park is the closest green space, perfect for sports, picnics, or a leisurely stroll. Slightly further afield, London Fields offers an expansive area for relaxation, complete with its popular lido for summer swims and sunbathing.



A WORD FROM THE OWNER...

"The location is brilliant for transport to any part of London, including commuting to the city. Great Overground and Bus links which allow for quick access to the tube as well. Locally there are lots of great restaurants, bars, and shops, and the Curve Garden nearby is great to relax in some greenery."

FOLLOW US ➔ @STOWBROTHERS
STOWBROTHERS.COM