

DUNLACE ROAD, HACKNEY

Offers In Excess Of £950,000 Freehold 3 Bed House



Features:

- Three Bedroom Mews House
- Two Bathrooms
- Beautifully Presented
- Private Courtyard
- Chatsworth Road Location
- Complete Chain

Spread out over two floors, this stylish and unique three-bedroom mews home is perfectly positioned between the buzz of Chatsworth Road and the vast greenery of Hackney Marshes. It's all beautifully finished, with two bathrooms, a bright open plan living area and an internal courtyard. Homerton station is a short ten minute walk away, putting you within easy reach of the whole capital.

REQUEST A VIEWING
0208 520 3077

E11, E7, E12 & E15
hello11@stowbrothers.com
0203 397 2222

E4 & N17
hello4@stowbrothers.com
0203 369 6444

E17 & E10
hello17@stowbrothers.com
0203 397 9797

E18 & IG8
hello18@stowbrothers.com
0203 369 1818

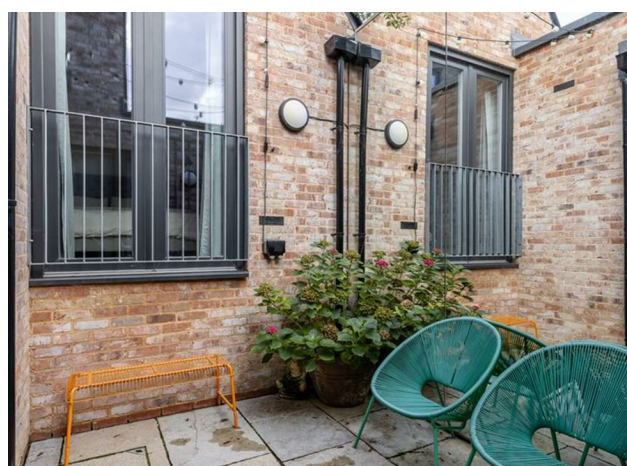
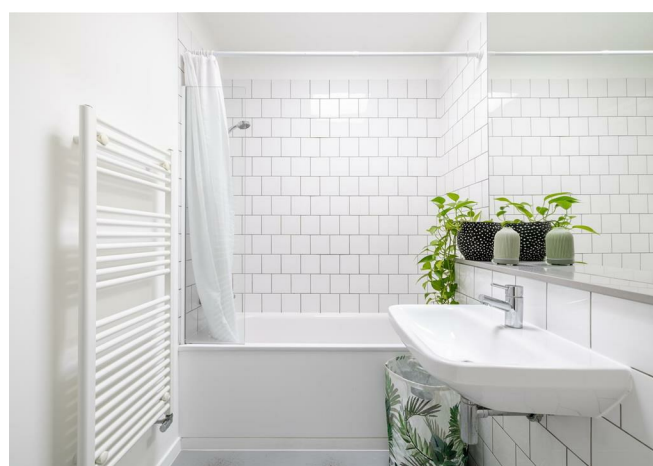
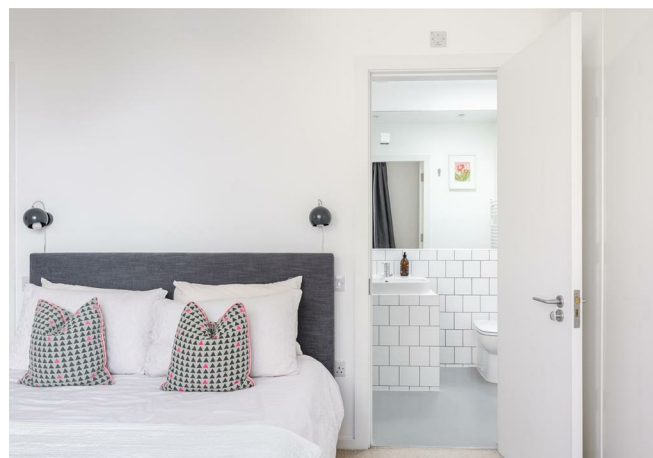
E8, E9, E5, N16, E3 & E2
hellohackney@stowbrothers.com
0208 520 3077

New Homes
newhomes@stowbrothers.com
0203 325 7227

Investment & Development
id@stowbrothers.com
0208 520 6220

Property Maintenance
propertymanagement@stowbrothers.com
0203 325 7228

STOWBROTHERS.COM
@STOWBROTHERS



IF YOU LIVED HERE...

If you've only ever admired this area from afar, you're in for a fantastic surprise. You've got the kind of amenities on your doorstep that people would willingly travel across London for. That doesn't mean you have to go out every night though, as staying in will also be a treat...

Beyond your charmingly unique front door, a spacious entrance hallway leads to your open plan living space. This vast room is brilliantly bright thanks to the generous patio doors and skylight, while the kitchen area is sleek and contemporary, with smart units, glossy metro-brick tiles and a handy peninsula breakfast bar which cleverly divides the space without impacting on the flow. The decor is pristine, and you'll really appreciate your sweeping engineered oak flooring. During warmer months, you'll love stepping into your stylish courtyard, which is fantastically low maintenance but offers bags of potential if you want to add potted blooms or a BBQ.

The ground floor bathroom has more immaculate design, with an over-tub shower and glossy tiling. Your first bedroom could make a fantastic home office if preferred, while the one at the rear is conveniently accessed via a five-step staircase, giving it a sense of seclusion. Of course, your master is tucked away on the first floor, so there's even more opportunity to spread out. This one also has a stylishly design ensuite and smart, generous storage.

Just beyond the development's front gates, you'll find some of East London's finest perks... You've got one of London's loveliest movie theatres, the Castle Cinema, mere minutes away - grab a drink at the bar there and enjoy one of the latest flicks without worrying about the schlep home. Right next to it, you'll find the Hackney branch of beloved grocery store, Eat 17. Or take a short stroll to Lower Clapton Road, where you'll find even more action, from the dim sum institution My Neighbours the Dumplings to the popular Vietnamese Hai Cafe. As well as these much-loved haunts, you'll find exciting new ventures constantly popping up and keeping you on your toes, so exploring will never get boring.

WHAT ELSE?

- Despite all the urban buzz, this area has a surprisingly large amount of green space. As well as Hackney Marshes, Victoria Park is accessible on foot, and home to some internationally renowned festivals including All Points East Festival and Field Day.
- Transport is plentiful in this area with some excellent bus routes nearby, as well as Homerton station, which is served by the Overground route, where you can easily access the tube at Stratford or Highbury and Islington.
- You've got a brilliant choice of local takeouts, but surely unpacking calls for a delivery from Yard Sale Pizza - one of our favourites.



A WORD FROM THE EXPERT...

"Living in Thyme Walk is an oasis of calm adjacent to fashionable Chatsworth Road with many restaurants, coffee shops, Eat 17 Supermarket, and Sunday market. Hackney Central, London Fields, and Victoria Park Village are an easy walking or short cycle distance away. Outdoor spaces and parks nearby include Hackney Marshes, Hackney Downs, Wick Woodland, Queen Elizabeth Park and Walthamstow Wetlands, making dog walking convenient as well as connecting with the friendly dog owner community. The Castle Cinema, Leo's restaurant & bar, Lucky & Joy, and The Spread Eagle pub have all been favourite hangouts during my years living in the area."

REQUEST A VIEWING
0208 520 3077

FOLLOW US → @STOWBROTHERS
STOWBROTHERS.COM



REQUEST A VIEWING
0208 520 3077

FOLLOW US → @STOWBROTHERS
STOWBROTHERS.COM



Kitchen / Dining / Reception Room
17'5" x 19'7"

Bathroom
11'9" x 5'5"

Bedroom
11'3" x 11'8"

Bedroom
7'10" x 10'9"

Bedroom
15'0" x 10'4"

Ensuite
8'11" x 5'11"

Internal Courtyard
7'8" x 12'1"



REQUEST A VIEWING
0208 520 3077

FOLLOW US → @STOWBROTHERS
STOWBROTHERS.COM