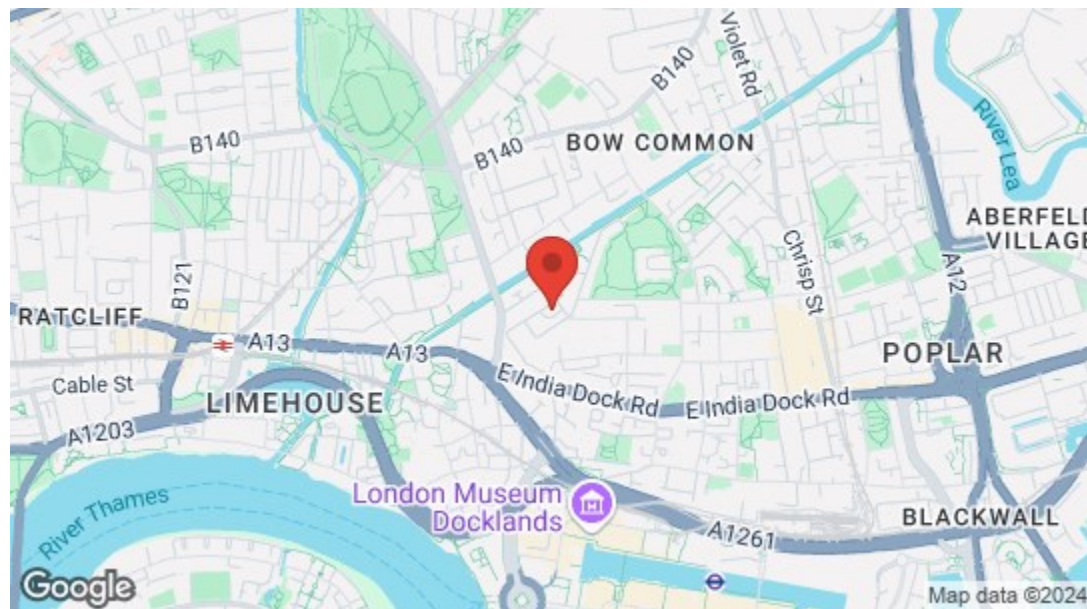


Total Area: 54.9 m² ... 591 ft² (excluding void)
 All measurements are approximate and for display purposes only



Old School Square, London
£2,700 Per Calendar Month
 1 bed, Flat



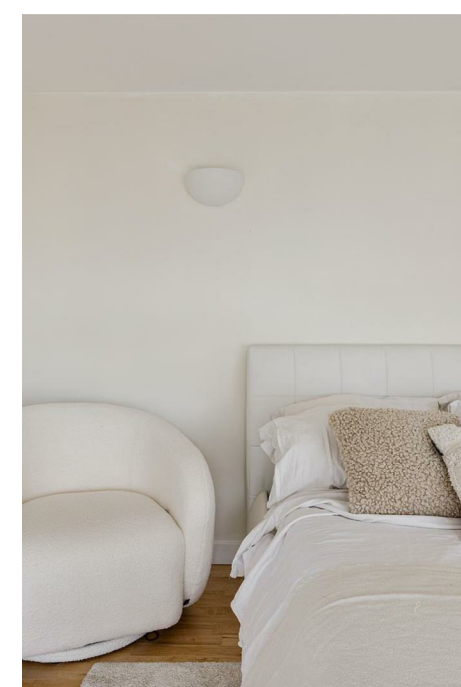
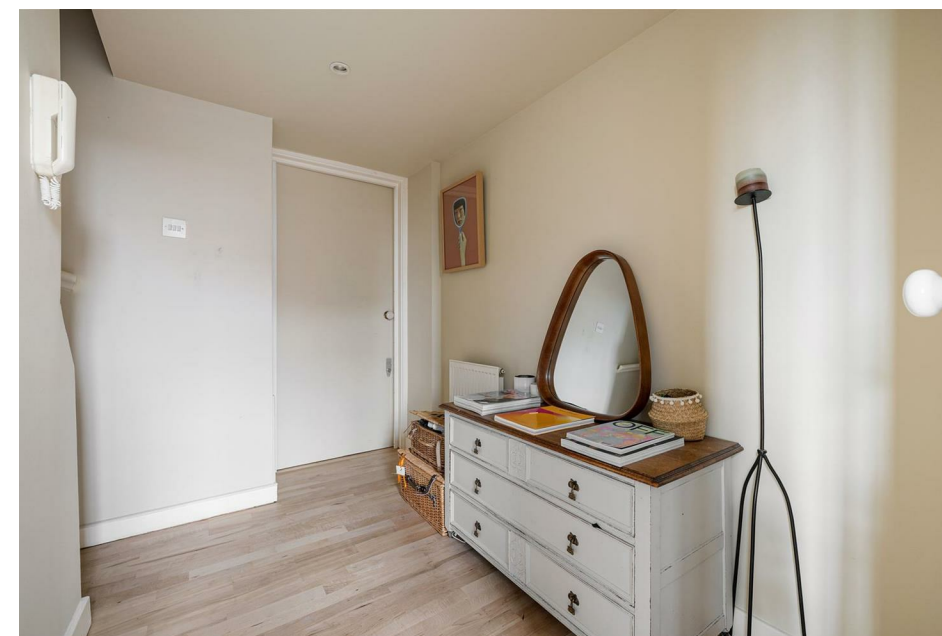
Energy Efficiency Rating		
	Current	Potential
Very energy efficient - lower running costs		
(92 plus) A		
(81-91) B		
(69-80) C		
(55-68) D		
(39-54) E		
(21-38) F		
(1-20) G		
Not energy efficient - higher running costs		
England & Wales	EU Directive 2002/91/EC	





Features

- Short Let
- One Bedroom Apartment
- Victorian School Conversion
- Double Height Reception
- Neutral Decor
- Excellently Located For The City
- Close To The River Thames



A pristine one bedroom mezzanine apartment on the second and third floors of a handsome red brick Victorian school building conversion, in the heart of Poplar. Offering classic loft living, all within walking distance of Canary Wharf.

As well as having the City on your doorstep, the Docklands Light Railway puts you twenty minutes from Bank station, door to door.



WHAT ELSE?

- Your new local is The Star of the East, a huge 1800s character pub with great food and a friendly welcome.
- Bartlett Park is a few moments away, whenever you feel like a breath of fresh air.
- Refuel with a mega breakfast at the nearby Beans & Beyond cafe.





➤➤ IF YOU LIVED HERE...

Through your entrance porch is a square hallway, with storage and staircase. This gives on to your spectacular double height reception. Huge dual aspect wood framed sash windows ensure the space is flooded with natural light. Engineered flooring stretches underfoot. On the right is your bathroom, tiled in a soft peachy shade. There's a modern white suite with concealed WC and bowl sink integrated into attractive storage, and shower over the tub.

Next to that you'll find your understated kitchen, with pale grey units and white square tiled splashbacks. Back through your hallway and upstairs is your secluded bedroom, overlooking your reception, with wood and glass balustrade and floor to ceiling drapes. Retro uplighters dot the walls, and the same easily maintained engineered flooring lies underfoot.

Less than twenty minutes on foot takes you to Canary Wharf, or jump on the DLR at Westferry, two stops from Heron Quays. Stratford is four stops away from nearby Langdon Park, another twenty minute journey door to door. All your amenities are close at hand on Commercial Road, and a short stroll takes you to the banks of the River Thames.

