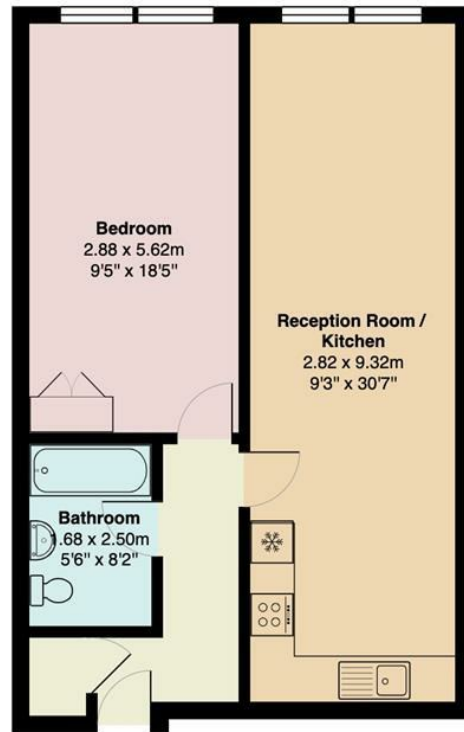
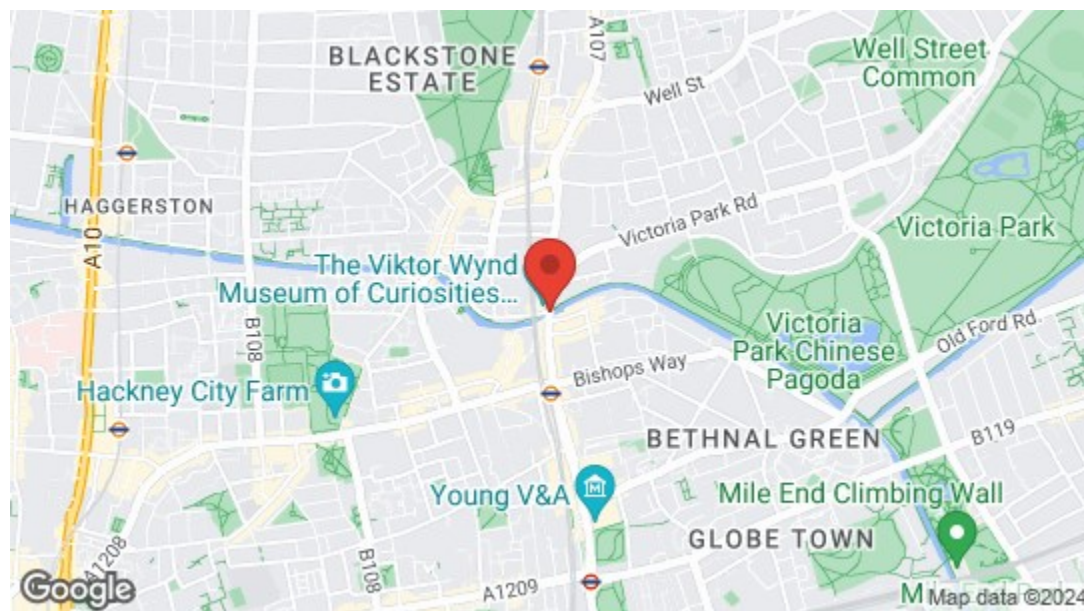


Mare Street, E8



Total Area: 54.9 m² ... 591 ft²

All measurements are approximate and for display purposes only



Energy Efficiency Rating		
	Current	Potential
Very energy efficient - lower running costs		
(92 plus) A		
(81-91) B		
(69-80) C		
(55-68) D		
(39-54) E		
(21-38) F		
(1-20) G		
Not energy efficient - higher running costs		
England & Wales	EU Directive 2002/91/EC	



Mare Street, Hackney
£2,100 Per Calendar Month
 1 bed, Apartment - Purpose Built



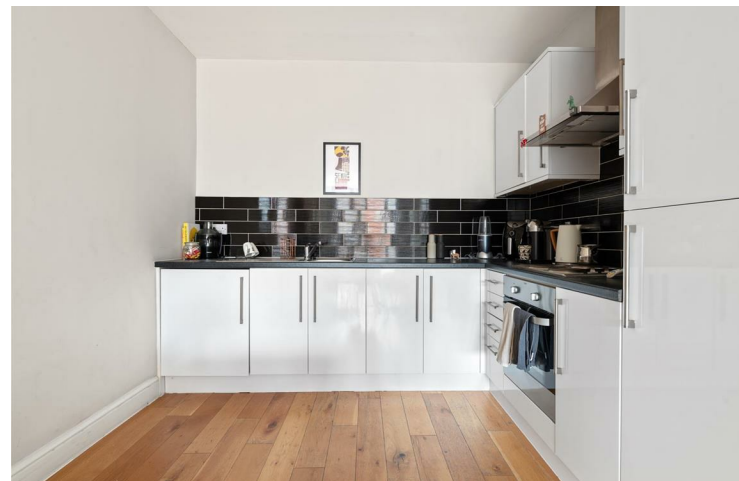


Features

- Communal Roof Terrace
- Hackney Central Location
- One Bedroom Apartment
- Open Plan Living Room
- Neutral Decor Throughout
- Wood Flooring Throughout



An immaculately finished, one bedroom, contemporary apartment located in the heart of Hackney and set among the hustle and bustle of which East London is known for.



WHAT ELSE?

- Hackney Central overground is just a five minute walk away, and serves as the central hub for London's overground. From here it's just ten minutes direct to Stratford, thirteen to Camden or twenty to Hampstead.

- London Fields, one of East London's most celebrated open green spaces, is just three minutes' walk to the south and ideal for morning jogs and evening strolls.





➤➤ IF YOU LIVED HERE...

You'll be enjoying Hackney living at its finest.

You'll be benefitting from a vast open planned kitchen/living room that is finished to a high specification, with a mixture of integrated appliances, nestled under spotless silicone composite worktops for a flawless culinary experience. Bedroom is a large double, flooded with yet more light thanks to large floor to ceiling windows.

Outside and the beating heart of Hackney is right on your doorstep. Long since matured from its hipster hangout days, East London's most vibrant borough has nonetheless lost none of its unique charm and character. Esoteric local favourites like Paper Dress Vintage (classic dress boutique and cafe by day, independent performance space and bar by night) rub shoulders with countless legendary vintage gastropubs - The Cock Tavern is your closest - and timeless institutions like The Hackney Empire and Hackney Picturehouse, all just moments from your front door.

