

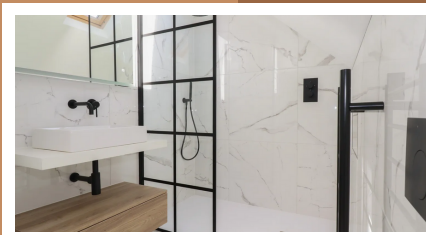
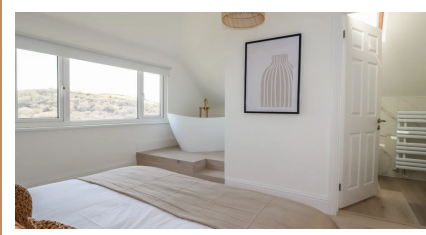
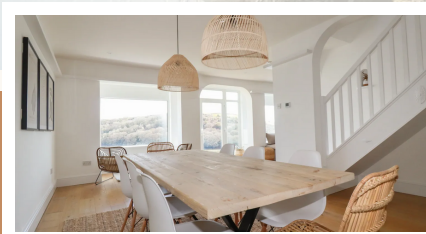


PROPERTY FOR SALE



EXCLUSIVE  
FAMILY  
RESIDENCE

FOR  
SALE



### ABOUT THE PROPERTY

An extremely stylish four bedroom detached home with glorious, panoramic Fowey Estuary views. Elevated position with gardens and off road parking. Positioned in an elevated location, one will find the most breathtaking, wide-ranging views over the Fowey estuary and the surrounding countryside. Situated at the end of School Lane, this residence enjoys a calm and tranquil ambiance.

### PROPERTY DETAIL



4 BEDROOMS



3 BATHROOMS



PANORAMIC VIEW

GET IN TOUCH

+01872 392150

www.morcornwall.com

Newham Road,  
Truro,  
Cornwall  
TR1 2XW

# EXCLUSIVE FAMILY RESIDENCE

FOR  
SALE



## KEY FACTS

- The Shaker-style kitchen has ample base-level storage units, thanks to most of the appliances being accommodated in the very convenient utility room, which also boasts generous storage cupboards.
- A twin bedroom is adjacent to a walk-in shower room with WC and washbasin.
- An oak-tread staircase ascends to the first floor onto a landing flooded with light from the Velux windows and light-colored decor. Storage cupboards line the hallway, eliminating the need for wardrobes in the bedrooms and providing more space. To the rear are two double bedrooms, one currently configured as a twin, and a very modern and impressive family bathroom with a double shower cubicle, washbasin, freestanding bath, and heated towel rail.
- The generously sized primary bedroom is exceptional. The elevated views over the river make this a room where you'd never want to depart. A freestanding bath on a raised step offers the ultimate spot to unwind while observing life on the river.



# EXCLUSIVE FAMILY RESIDENCE

FOR  
SALE



## KEY FACTS

- A beautifully designed en-suite bathroom comprises a double shower, WC, heated towel rail, and twin washbasins on a vanity unit.
- The house features a wet underfloor heating system on the ground floor and electric underfloor heating on the first floor.
- Exterior – At the front of the residence, there's an off-road parking spot with steps leading to a lawned area.
- Additional steps lead to the entrance of the open-plan living area, with a path circling around the side of the residence. Underneath, there's a storage area that's quite useful for garden tools and bins.
- Steps continue around the left side of the house to the rear, where the property extends over a sheltered area, suitable for storage, plus entrance. Further steps lead to a lawned area. At the top of the garden, there's a decked seating area for outdoor dining and enjoying estuary views.