

Room 3 1a North Street, Heavitree, EX1 2RH
To Let £720 PCM

robson
lettings
Dedicated Lettings & Property Advisers

- Double Ensuite Bedrom
- Located in the heart of Heavitree
- First Floor
- Brand New Facilities

THE PROPERTY

Robson Lettings are delighted to offer a choice of 2 bedrooms in this modern house. Situated in the heart of Heavitree this bustling community offers a wide range of amenities and fantastic transport links. Both the RD&E Hospital and Heavitree Hospital are within easy walking distance.

The property has a the use of shared communal kitchen / dining space. There is a double bedroom ensuite bedroom is located on the first floor of the house (Room 3)

There is also another smaller double bedroom also located on the first floor, with private shower room (not ensuite) and a private balcony for use of the room only (Room 2)

Each room is for single occupancy only.
Furnished for convenience
Single occupancy only

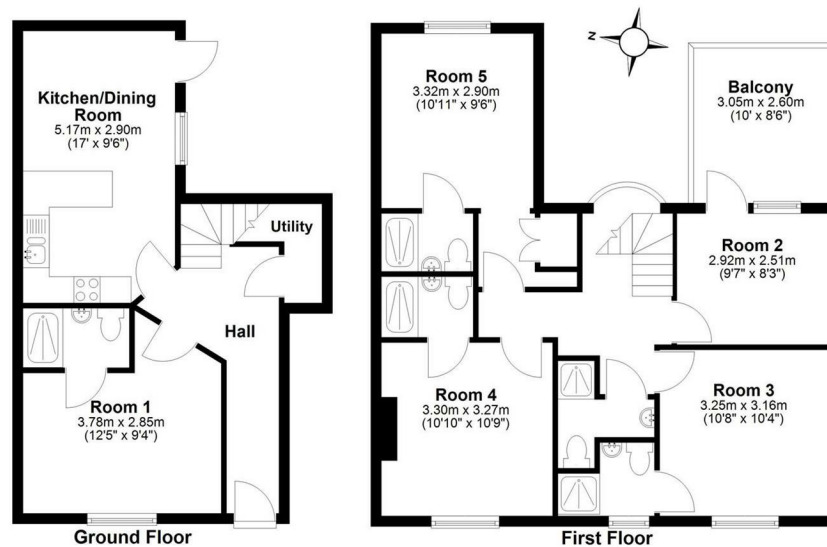
Included in the Rent:

All utility bills (gas, electricity, water rates, council tax) — subject to a fair usage policy
Superfast broadband
Regular cleaning of communal areas

The property will be let on a HMO licence for a maximum of 5 people. EER 'D'

Room 3 - £720 per month

Room 2 - £695 per month



Total area: approx. 99.1 sq. metres (1066.9 sq. feet)

1A North Street, Heavitree, Exeter