



Room 5 1a North Street, Heavitree, EX1 2RH
To Let £725 PCM

robson
lettings
Dedicated Lettings & Property Advisers

THE PROPERTY

Robson Lettings are delighted to offer this spacious double bedroom in this well presented house. Situated in the heart of Heavitree this bustling community offers a wide range of amenities and fantastic transport links. Both the RD&E Hospital and Heavitree Hospital are within easy walking distance.

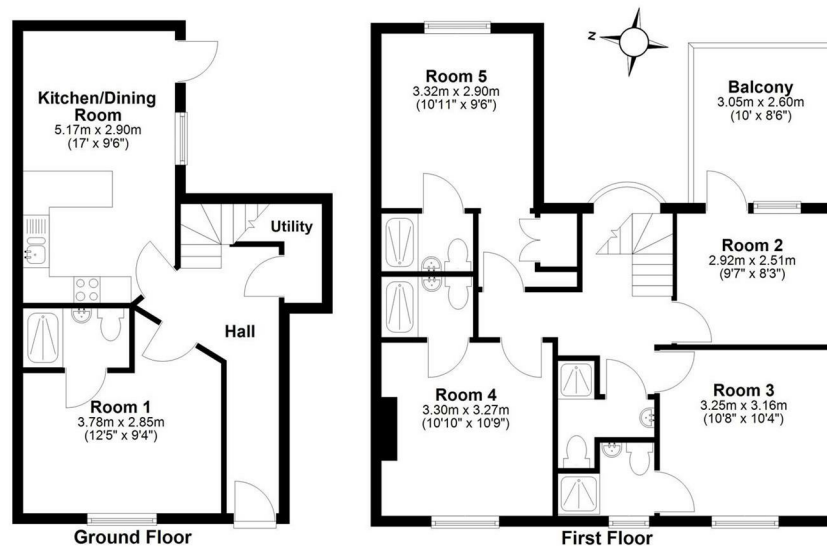
The property has a the use of shared communal kitchen / dining space.

This double ensuite bedroom is located on the first floor of the property and has a large wardrobe / dressing area in addition to the bedroom space.

Each room is for single occupancy only. Rent is inclusive of all utility bills to include gas, electricity, water rates and council tax based on a fair usage policy. There is also superfast broadband. A cleaner will attend to clean the communal areas on a regular basis.

The property will be let on a HMO licence for a maximum of 5 people. EER 'D'

Room 5 on the Floorplan.



Total area: approx. 99.1 sq. metres (1066.9 sq. feet)

1A North Street, Heavitree, Exeter