

Great Oldbury

Stonehouse

CONSUMER
CODE FOR
HOME BUILDERS

www.consumercode.co.uk

Bovis
Homes 

Great Oldbury

Stonehouse

3 bedroom homes

- The Apple
- The Hazel
- The Spruce
- The Cypress
- The Beech
- Sage Home

4 bedroom homes

- The Juniper
- The Chestnut
- The Aspen
- The Alder
- The Orchard
- Sage Home

Pre-sold homes

- Pre-sold homes / apartments

- bcp bin collection point
- bs bin store
- cs cycle store
- v visitor space

Sage Homes
built by Bovis Homes





The Beech

3 bedroom home

bovishomes.co.uk

**Bovis
Homes** 

The Beech

3 bedroom home

Ground floor	metres	feet / inches
Kitchen / dining room	4.74 x 2.91	15' 6" x 9' 7"
Sitting room	4.00 x 3.72	13' 1" x 12' 2"

First floor	metres	feet / inches
Bedroom 2	4.74 x 2.62	15' 7" x 8' 7"
Bedroom 3	3.39 x 2.49	11' 1" x 8' 2"

Second floor	metres	feet / inches
Bedroom 1	3.62 x 3.02	11' 11" x 9' 11"

ovn	oven	ffzs	fridge freezer space
h	hob	cup'd	cupboard
ds	dishwasher space	◀ ▶	measuring points
ws	washing machine space		

The floorplan has been produced for illustrative purposes only. Room sizes shown are between arrow points as indicated on plan. The dimensions have tolerances of + or -50mm and should not be used other than for general guidance. If specific dimensions are required, enquiries should be made to the sales consultant. The floor plans shown are not to scale. Measurements are based on the original drawings. Slight variations may occur during construction.

The illustrations shown are computer generated impressions of how the property may look and are indicative only. External details or finishes may vary on individual plots and homes may be built in either detached or attached styles depending on the development layout. Exact specifications, window styles and whether a property is left or right handed may differ from plot to plot. Please speak to our sales consultant for specific plot details.

* Windows apply to selected plots only. Please see sales consultant for further details.

** Solar panel service access. Please see sales consultant for further details.

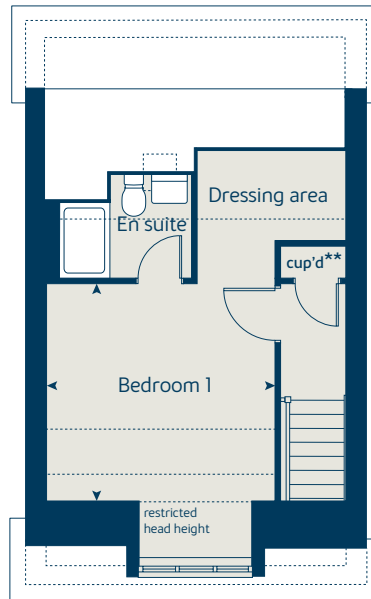
The Beech | X309 Stonehouse

Produced by the Vistry Group Design Studio.

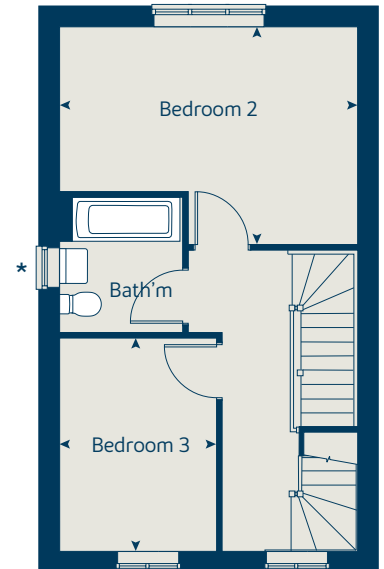
When you have finished with this leaflet please recycle it.

130-HSTN2 DS08288 / 02.24

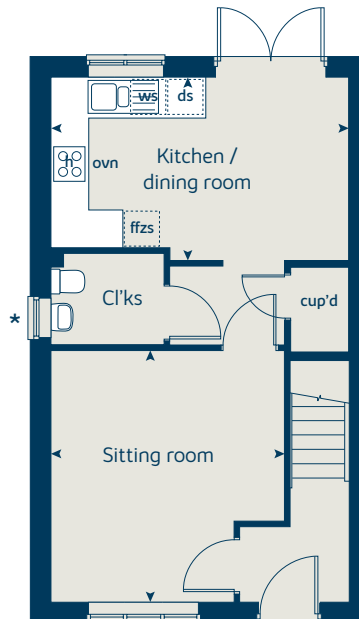
Second floor



First floor



Ground floor





The Chestnut

4 bedroom home

bovishomes.co.uk

**Bovis
Homes** 

The Chestnut

4 bedroom home

Ground floor	metres	feet / inches
Kitchen	4.05 x 3.05	13' 3" x 10' 0"
Dining / family area	4.60 x 2.83	15' 1" x 9' 3"
Sitting room	4.98 x 3.41	16' 4" x 11' 2"
Study	3.41 x 1.81	11' 2" x 5' 11"

First floor

Bedroom 1	3.24 x 2.98	10' 7" x 9' 8"
Bedroom 2	3.44 x 3.37	11' 3" x 11' 1"
Bedroom 3	3.42 x 2.31	11' 3" x 7' 7"
Bedroom 4	3.21 x 2.35	10' 6" x 7' 9"

ovn	oven	ffzr	fridge freezer
h	hob	ldr	larder
ds	dishwasher space	cup'd	cupboard
ws	washing machine space	◀ ▶	measuring points

The floorplan has been produced for illustrative purposes only. Room sizes shown are between arrow points as indicated on plan. The dimensions have tolerances of + or -50mm and should not be used other than for general guidance. If specific dimensions are required, enquiries should be made to the sales consultant. The floor plans shown are not to scale. Measurements are based on the original drawings. Slight variations may occur during construction.

The illustrations shown are computer generated impressions of how the property may look and are indicative only. External details or finishes may vary on individual plots and homes may be built in either detached or attached styles depending on the development layout. Exact specifications, window styles and whether a property is left or right handed may differ from plot to plot. Please speak to our sales consultant for specific plot details.

* Windows apply to selected plots only. Please see sales consultant for further details.

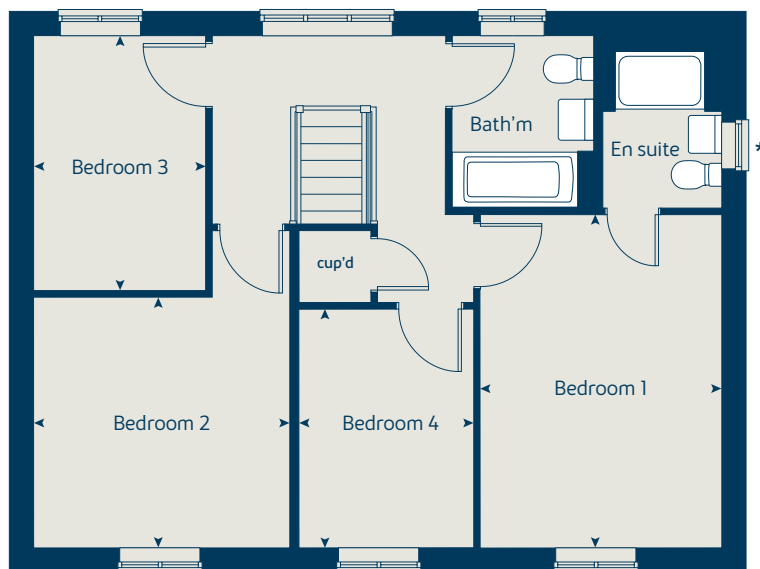
The Chestnut | X413 Stonehouse

Produced by the Vistry Group Design Studio.

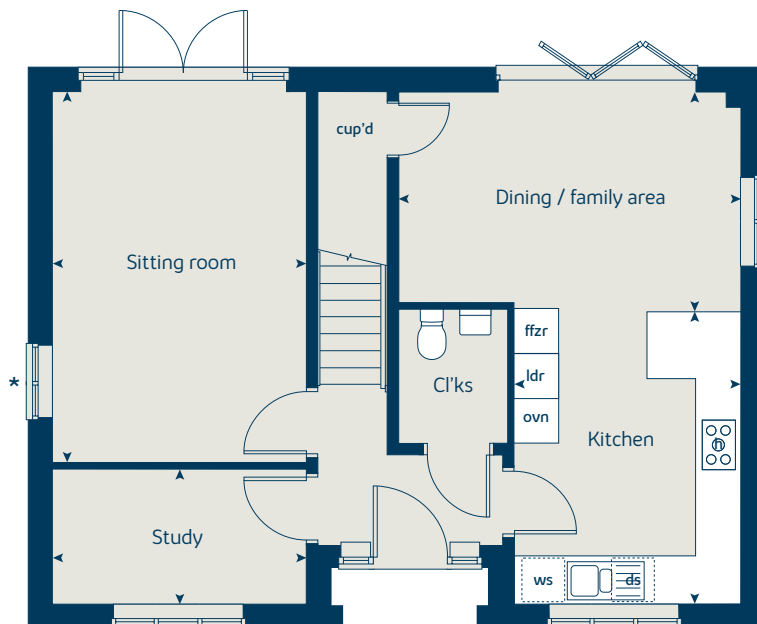
When you have finished with this leaflet please recycle it.

130-HSTN2 DS08288 / 02.24

First floor



Ground floor





The Aspen

4 bedroom home

bovishomes.co.uk

**Bovis
Homes** 

The Aspen

4 bedroom home

Ground floor	metres	feet / inches
Kitchen / dining area	7.77 x 3.37	25' 6" x 11' 1"
Sitting room	5.04 x 3.39	16' 6" x 11' 1"
Study	2.01 x 2.01	6' 7" x 6' 7"

First floor

Bedroom 1	4.52 x 3.81	14' 10" x 12' 6"
Bedroom 2	3.87 x 3.11	12' 8" x 10' 2"
Bedroom 3	4.07 x 2.42	13' 4" x 7' 11"
Bedroom 4	3.61 x 2.45	11' 10" x 8' 1"

ovn	oven	ffzr	fridge freezer
h	hob	ldr	larder
ds	dishwasher space	cup'd	cupboard
ws	washing machine space	< >	measuring points

The floorplan has been produced for illustrative purposes only. Room sizes shown are between arrow points as indicated on plan. The dimensions have tolerances of + or -50mm and should not be used other than for general guidance. If specific dimensions are required, enquiries should be made to the sales consultant. The floor plans shown are not to scale. Measurements are based on the original drawings. Slight variations may occur during construction.

The illustrations shown are computer generated impressions of how the property may look and are indicative only. External details or finishes may vary on individual plots and homes may be built in either detached or attached styles depending on the development layout. Exact specifications, window styles and whether a property is left or right handed may differ from plot to plot. Please speak to our sales consultant for specific plot details.

- * Windows apply to selected plots only. Please see sales consultant for further details.

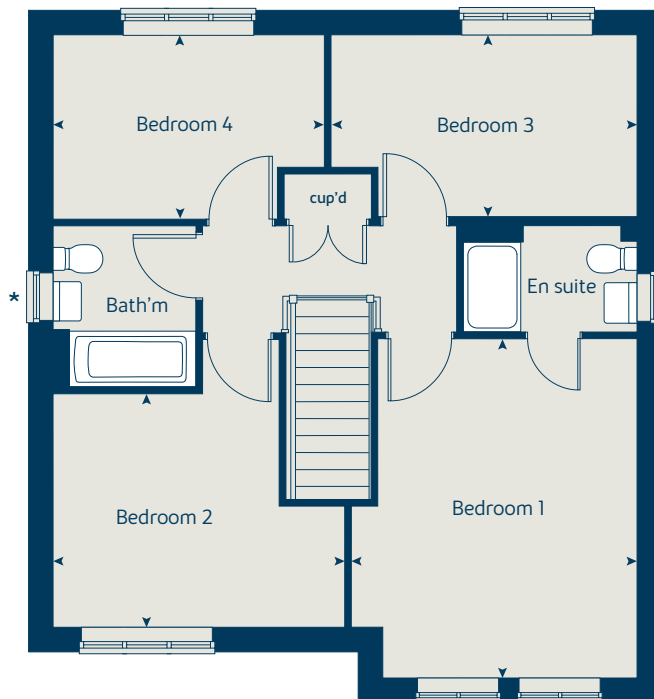
The Aspen | X414 (F) Stonehouse

Produced by the Vistry Group Design Studio.

When you have finished with this leaflet please recycle it.

130-HSTN2 DS08288 / 02.24

First floor



Ground floor





The Orchard

4 bedroom home

bovishomes.co.uk

**Bovis
Homes** 

The Orchard

4 bedroom home

Ground floor	metres	feet / inches
Kitchen / family / dining	8.00 x 3.55	26' 3" x 11' 8"
Sitting room	4.32 x 4.29	14' 2" x 14' 1"
Study	3.13 x 1.84	10' 3" x 6' 1"

First floor	metres	feet / inches
Bedroom 1	4.28 x 3.80	14' 1" x 12' 6"
Bedroom 2	4.71 x 3.57	15' 5" x 11' 9"
Bedroom 3	3.62 x 3.13	11' 11" x 10' 3"
Bedroom 4	3.58 x 3.20	11' 9" x 10' 6"

ovn	oven	ffzr	fridge freezer
h	hob	ldr	larder
ws	washing machine space	cup'd	cupboard
ds	dishwasher space	◀ ▶	measuring points

The floorplan has been produced for illustrative purposes only. Room sizes shown are between arrow points as indicated on plan. The dimensions have tolerances of + or -50mm and should not be used other than for general guidance. If specific dimensions are required, enquiries should be made to the sales consultant. The floor plans shown are not to scale. Measurements are based on the original drawings. Slight variations may occur during construction.

The illustrations shown are computer generated impressions of how the property may look and are indicative only. External details or finishes may vary on individual plots and homes may be built in either detached or attached styles depending on the development layout. Exact specifications, window styles and whether a property is left or right handed may differ from plot to plot. Please speak to our sales consultant for specific plot details.

* Door applies to selected plots only.
Please see sales consultant for further details.

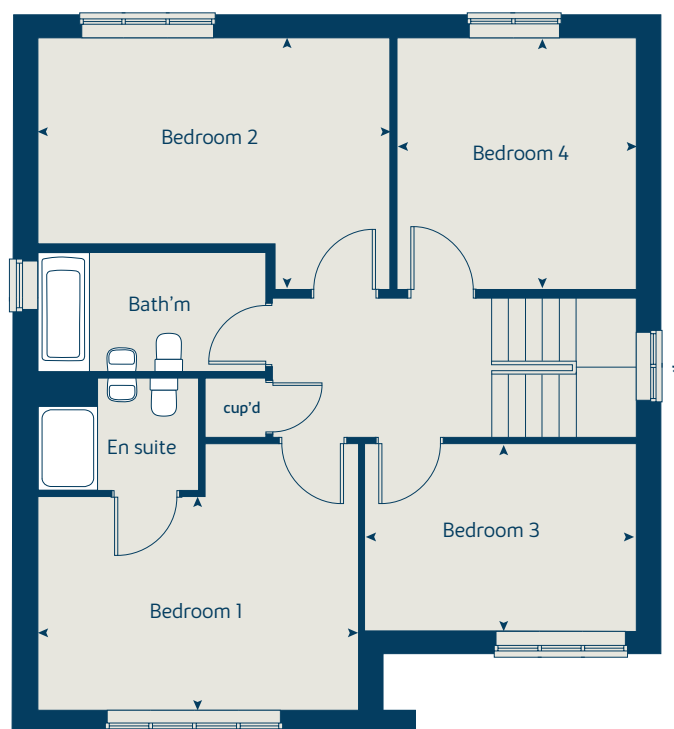
The Orchard | W4025 Stonehouse

Produced by the Vistry Group Design Studio.

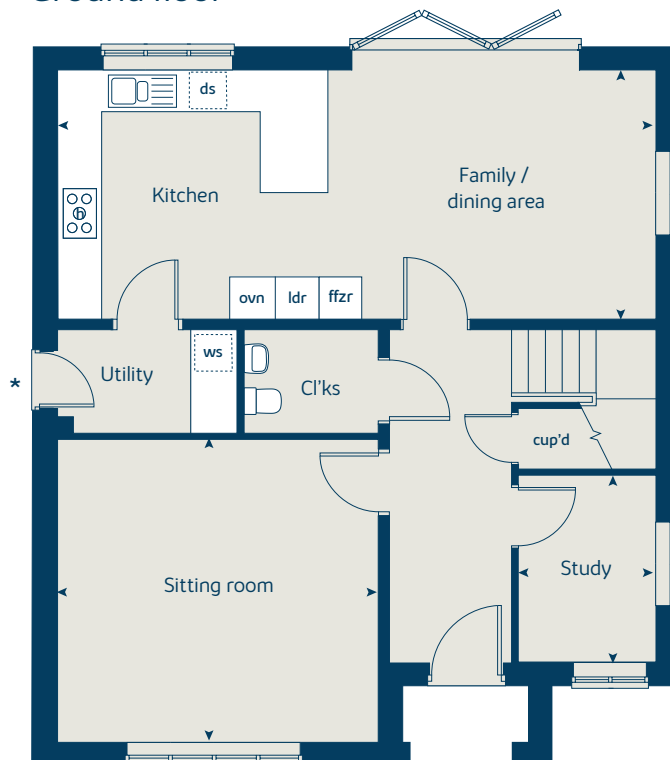
When you have finished with this leaflet please recycle it.

130-HSTN2 DS08288 / 02.24

First floor



Ground floor





The Orchard II

4 bedroom home

bovishomes.co.uk

**Bovis
Homes** 

The Orchard II

4 bedroom home

Ground floor	metres	feet / inches
Kitchen / family / dining	8.00 x 3.55	26' 3" x 11' 8"
Sitting room	4.32 x 4.29	14' 2" x 14' 1"
Study	3.13 x 1.84	10' 3" x 6' 1"

First floor

Bedroom 1	4.28 x 3.80	14' 1" x 12' 6"
Bedroom 2	4.71 x 3.57	15' 5" x 11' 9"
Bedroom 3	3.62 x 3.13	11' 11" x 10' 3"
Bedroom 4	3.58 x 3.20	11' 9" x 10' 6"

ovn	oven	ffzr	fridge freezer
h	hob	ldr	larder
ws	washing machine space	cup'd	cupboard
ds	dishwasher space	◀ ▶	measuring points

The floorplan has been produced for illustrative purposes only. Room sizes shown are between arrow points as indicated on plan. The dimensions have tolerances of + or -50mm and should not be used other than for general guidance. If specific dimensions are required, enquiries should be made to the sales consultant. The floor plans shown are not to scale. Measurements are based on the original drawings. Slight variations may occur during construction.

The illustrations shown are computer generated impressions of how the property may look and are indicative only. External details or finishes may vary on individual plots and homes may be built in either detached or attached styles depending on the development layout. Exact specifications, window styles and whether a property is left or right handed may differ from plot to plot. Please speak to our sales consultant for specific plot details.

* Door and window applies to selected plots only. Please see sales consultant for further details.

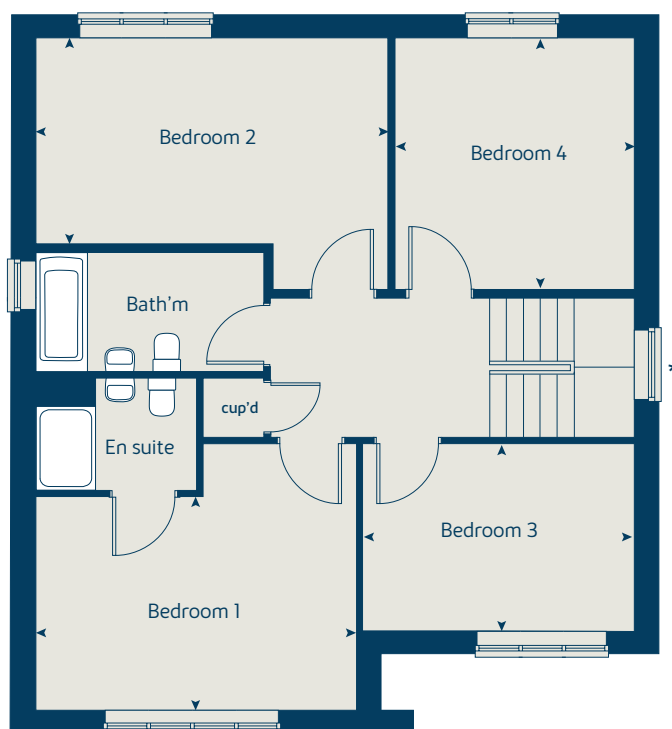
The Orchard II | W4025 Stonehouse

Produced by the Vistry Group Design Studio.

When you have finished with this leaflet please recycle it.

130-HSTN2 DS08288 / 02.24

First floor



Ground floor

