



Flat 3, Georgian House, 1 New Road
£150,000



Flat 3

Kirkby Lonsdale

A well proportioned town apartment located in the delightful market town of Kirkby Lonsdale. This property access easy access to the towns amenities, road links to the M6 Motorway, Lake District National Park and the Yorkshire National Park.

This well-kept town centre apartment offers a wonderful opportunity for those seeking a comfortable and convenient urban lifestyle.

Located in the heart of town, this one-bedroom apartment boasts a light and airy sitting room, providing a welcoming space to relax and entertain. The double glazing in part ensures a peaceful environment, while the electric heating system provides efficient warmth throughout.

A key highlight of this property is the kitchen, which offers not only amenities but also additional storage space, catering to the practical needs of daily living. The apartment features one double bedroom, providing a comfortable and private retreat at the end of the day. The en-suite bathroom adds a touch of luxury and convenience, completing the bedroom suite.

Residents of this apartment will benefit from easy access to a wide range of amenities including shops, restaurants, cafes, and other essential services, all just a stone's throw away. The central location also ensures excellent transport links, with road connections to the M6 Motorway nearby, allowing for convenient travel to surrounding areas.

Whether you are a first-time buyer looking to step onto the property ladder, a professional seeking a convenient urban base, or an investor looking for a prime rental opportunity, this apartment offers a versatile and attractive option. The town centre location ensures a vibrant and dynamic lifestyle, with a host of entertainment options and cultural attractions within easy reach.

- Well kept town centre apartment
- Double glazing to part
- Light and airy sitting room
- In the centre of town
- Kitchen with extra storage
- Electric heating
- One double bedroom
- Easy access to amenities
- En-suite bathroom
- Road links to M6 Motorway

EPC RATING D

SERVICES

Mains electric, mains water, mains drainage

COUNCIL TAX: BAND A

TENURE: LEASEHOLD

DIRECTIONS

Flat 3 is located across the street from the Thomson Hayton Winkley office in Kirkby Lonsdale.

WHAT3WORDS:blown.unite.drifter

ENTRANCE HALL

5' 1" x 3' 3" (1.54m x 0.98m)

SITTING ROOM

14' 9" x 11' 9" (4.49m x 3.58m)

KITCHEN

21' 8" x 6' 6" (6.61m x 1.99m)

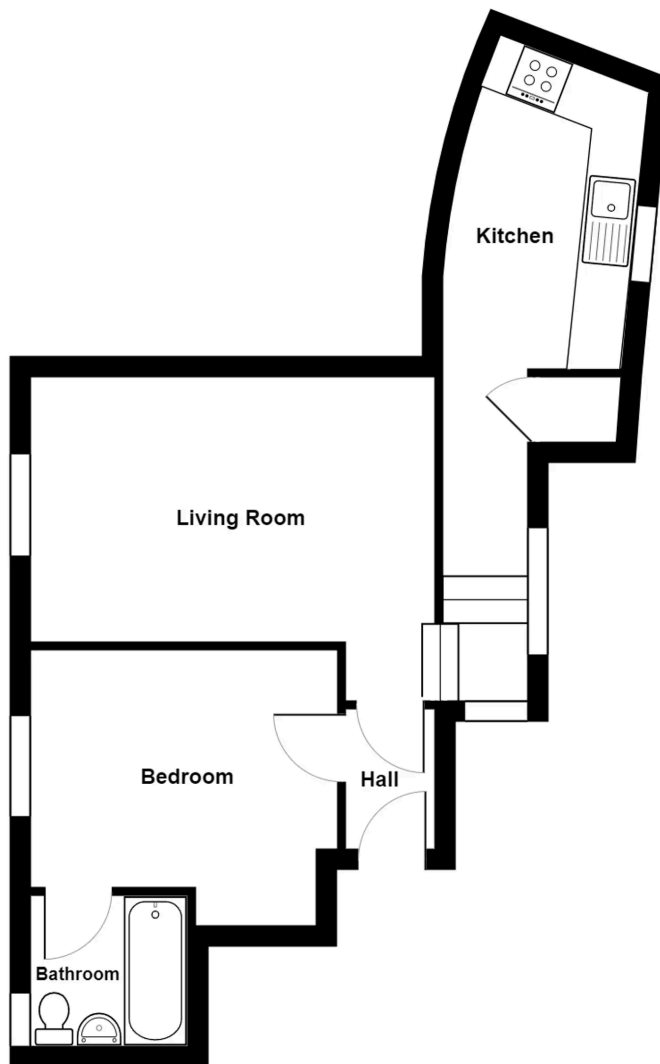
BEDROOM

10' 8" x 9' 11" (3.26m x 3.01m)

BATHROOM

6' 10" x 5' 5" (2.08m x 1.66m)





Apartment 3, Georgian House, 1 New Road, Kirkby Lonsdale

For illustrative purposes only - not to scale. The position and size of features are approximate only.
© North West Inspector.

THW Estate Agents

29 Main Street, Kirkby Lonsdale - LA6 2AH

015242 71999 • kirkby@thwestestateagents.co.uk • www.thwestestateagents.co.uk

Please note that descriptions, photographs and plans are for guidance only. Services and appliances have not been tested, measurements are approximate and alterations may not have necessary consents. Contact us for property availability and important details before travelling or viewing properties. THW Estate Agents Ltd is a separate legal entity to the solicitor firm of THW Legal Ltd which has different ownership and clients of THW Estate Agents Ltd do not have the same protection as those of THW Legal Ltd.