



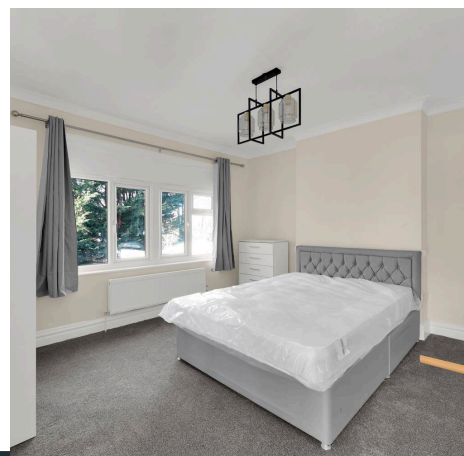
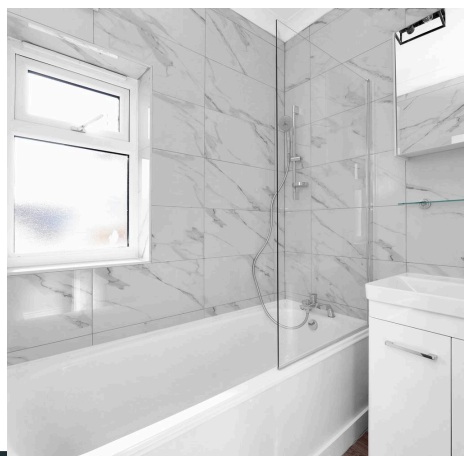
Pearl & Chance

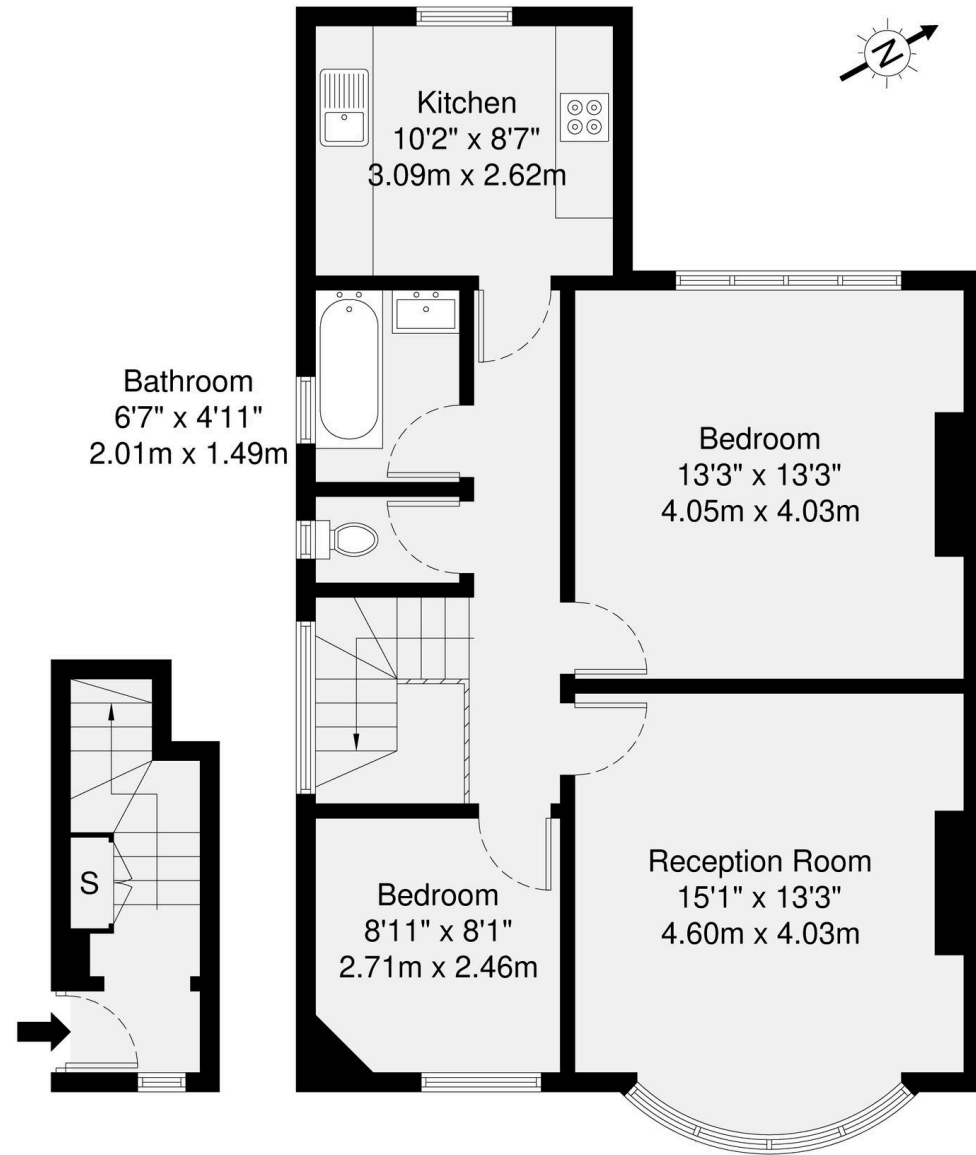
Russell Gardens, London, NW11
£1,900 pcm

Russell Gardens, London, NW11


This newly refurbished first-floor flat offers a fresh and modern living space. It features two well-proportioned bedrooms, a bright living area, and a well-equipped kitchen. The property is fully furnished and ready to move into. Located within easy reach of Golders Green and Brent Cross Underground Stations, as well as local shops, coffee shops, and restaurants, this flat is well positioned for access to transport links and amenities. Viewings are highly recommended.

- Deposit £2,192
- Council Tax band: G
- Available Immediately
- Two Bedrooms
- Newly Refurbished
- First Floor Flat
- Close to Golders Green and Brent Cross Tube
- Close to Local Amenities





Energy Efficiency Rating

	Current	Potential
Very energy efficient - lower running costs		
(92+) A		
(81-91) B		
(69-80) C		75
(55-68) D	63	
(39-54) E		
(21-38) F		
(1-20) G		
Not energy efficient - higher running costs		
England, Scotland & Wales		EU Directive 2002/91/EC 

GROSS INTERNAL AREA (GIA)
The footprint of the property
69.8 sq m / 751 sq ft

TOTAL STORAGE SPACE
Storage and wardrobe total area
0.4 sq m / 4 sq ft

EXTERNAL FEATURES
Garden, Balcony, Terrace, Verandah etc.
0.0 sq m / 0.0 sq ft

RESTRICTED HEAD HEIGHT
Limited use area under 1.5m
0.0 sq m / 0.0 sq ft

Disclaimer : Floorplan measurements are approximate and are for illustrative purposes only. While we do not doubt the floorplan accuracy and completeness, you or your advisors should conduct a careful, independent investigation of the property in respect of monetary valuation.

Maison
VUE



Pearl & Chance

1 Hoop Lane, Golders Green - NW11 8JR

0208 059 5559

info@pearlandchance.co.uk

<http://pearlandchance.co.uk>



IMPORTANT: These sales particulars have been prepared as a general guide only. A detailed survey has not been carried out, nor the services, appliances and fittings tested. Room sizes should not be relied upon for furnishing purposes and are approximate. If floor plans are included, they are for guidance only and illustration purposes only and may not be to scale. If there are any important matters likely to affect your decision to buy, please contact us before viewing the property.