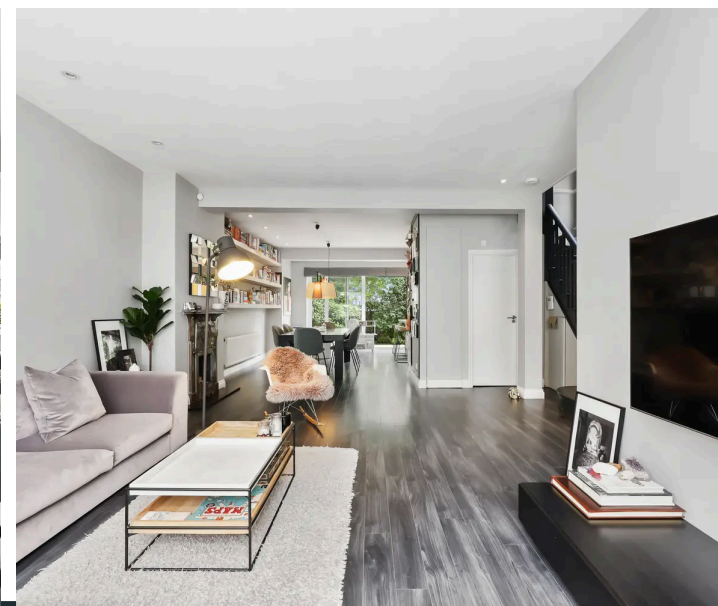


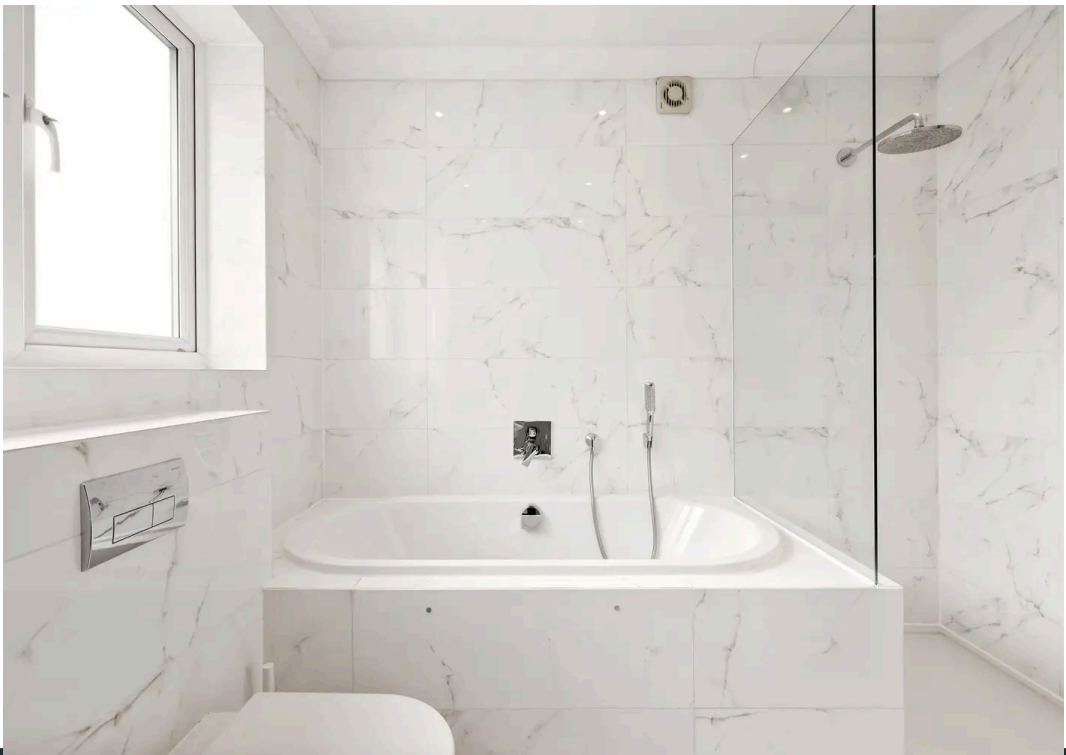


Powis Gardens, London, NW11

This impressive four bedroom, two bathroom semi detached family home located on a prime residential road, just off Golders Green Road, is perfect for those who value convenience and accessibility. The spacious open-plan reception area offers a modern, versatile living space ideal for entertaining guests. The property includes new high-spec kitchen appliances, a downstairs WC and four bedrooms, three of which are double bedrooms, making it suitable for a growing family or those who require a home office. Both bathrooms feature walk-in showers, and the main bedroom offers ample eaves storage for extra practicality.

Nestled in a quiet cul-de-sac, this extended family home is conveniently located within walking distance of Golders Green Tube Station and moments away from the shops, restaurants, and coffee shops of Golders Green Road. Commuting is made easy with excellent transport links to Central London and motorway roads to take you further afield. This property presents a fantastic opportunity for buyers looking for a well-connected, stylish, and comfortable family home in the heart of Golders Green. Contact us today to arrange a viewing.








Disclaimer : Floorplan measurements are approximate and are for illustrative purposes only. While we do not doubt the floorplan accuracy and completeness, you or your advisors should conduct a careful, independent investigation of the property in respect of monetary valuation.

Maison
VUE

Energy Efficiency Rating

	Current	Potential
Very energy efficient - lower running costs		
(92+) A		
(81-91) B		83
(69-80) C	69	
(55-68) D		
(39-54) E		
(21-38) F		
(1-20) G		
Not energy efficient - higher running costs		
England, Scotland & Wales		EU Directive 2002/91/EC 



Pearl & Chance

1 Hoop Lane, Golders Green – NW11 8JR

0208 059 5559

info@pearlandchance.co.uk

<http://pearlandchance.co.uk>

IMPORTANT: These sales particulars have been prepared as a general guide only. A detailed survey has not been carried out, nor the services, appliances and fittings tested. Room sizes should not be relied upon for furnishing purposes and are approximate. If floor plans are included, they are for guidance only and illustration purposes only and may not be to scale. If there are any important matters likely to affect your decision to buy, please contact us before viewing the property.