



Pearl & Chance

The Vale, London, NW11

£715,000

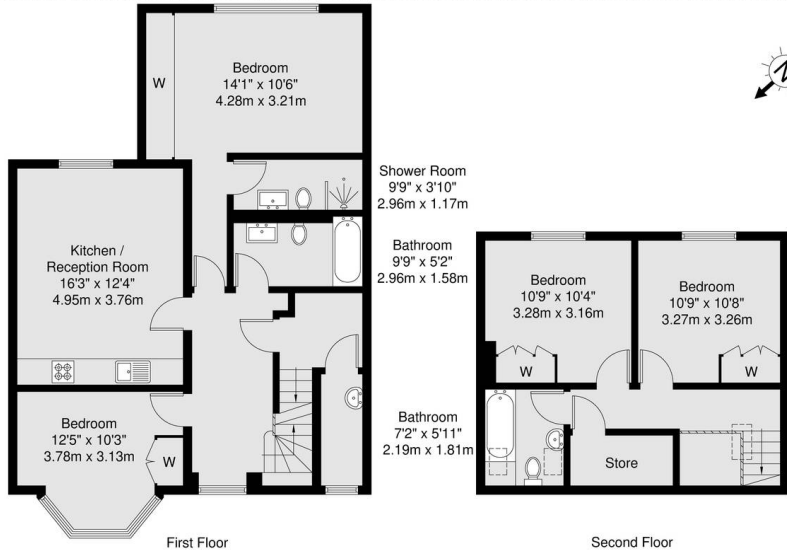
## The Vale, London, NW11

This beautifully refurbished first and second-floor duplex flat, offered with a share of the freehold, features four spacious double bedrooms and three modern bathrooms. The main bedroom includes fitted wardrobes and an en suite shower room. The property boasts a modern open-plan kitchen and reception room, equipped with high-end integrated appliances. Ideally located to enjoy all that Golders Green has to offer, the flat is just moments from Brent Cross Shopping Centre, Golders Green High Street, and West Hampstead, providing a variety of shopping, dining, and entertainment options. It also benefits from excellent transport links, being close to the Northern Line, Cricklewood Overground Station, and key roadways such as the A40, A406, and M1—making it perfect for commuters.

- Share of Freehold
- Four Double Bedrooms
- Three Bathrooms
- Duplex Flat
- 1233 Sq Ft
- Good Transport Links
- Easy Access to Major Roads







GROSS INTERNAL AREA (GIA)  
The footprint of the property  
114.6 sq m / 1233 sq ft

TOTAL STORAGE SPACE  
Storage and wardrobe total area  
4.3 sq m / 46 sq ft

EXTERNAL STRUCTURAL FEATURES  
Garden, Balcony, Terrace, Verandah etc.  
0.0 sq m / 0.0 sq ft

RESTRICTED HEAD HEIGHT  
Limited use area under 1.5m  
0.0 sq m / 0.0 sq ft

Disclaimer : Floorplan measurements are approximate and are for illustrative purposes only. While we do not doubt the floorplan accuracy and completeness, you or your advisors should conduct a careful, independent investigation of the property in respect of monetary valuation.



## Pearl & Chance

136-144 Golders Green Road, London - NW11 8HB

0208 059 5559

[info@pearlandchance.co.uk](mailto:info@pearlandchance.co.uk)

<http://pearlandchance.co.uk>

IMPORTANT: These sales particulars have been prepared as a general guide only. A detailed survey has not been carried out, nor the services, appliances and fittings tested. Room sizes should not be relied upon for furnishing purposes and are approximate. If floor plans are included, they are for guidance only and illustration purposes only and may not be to scale. If there are any important matters likely to affect your decision to buy, please contact us before viewing the property.