

STONE



Beverley Heights RH2

£1,750,000

*“At Stone, we’re passionate about
the unique and awe-inspiring
architectural elements that transform
houses into dream homes.”*

The Stone Family



Step inside this perfectly positioned four-bedroom home in the highly sought-after Beverley Heights in Reigate, where contemporary sophistication meets family-friendly comfort. Built in 2021, this modern residence combines architectural elegance with practical design, offering generous proportions, exceptional craftsmanship, and a layout tailored to the needs of modern living.

From the moment you enter, you're greeted by a bright and spacious hallway that sets the tone for the rest of the home, light-filled, stylish, and meticulously maintained. The heart of the property is undoubtedly the stunning open-plan kitchen, featuring striking white cabinetry complemented by luxurious marble worktops and high quality integrated appliances. A large central island provides the perfect gathering point for family breakfasts or evening entertaining, while the clever design ensures plenty of storage and workspace.

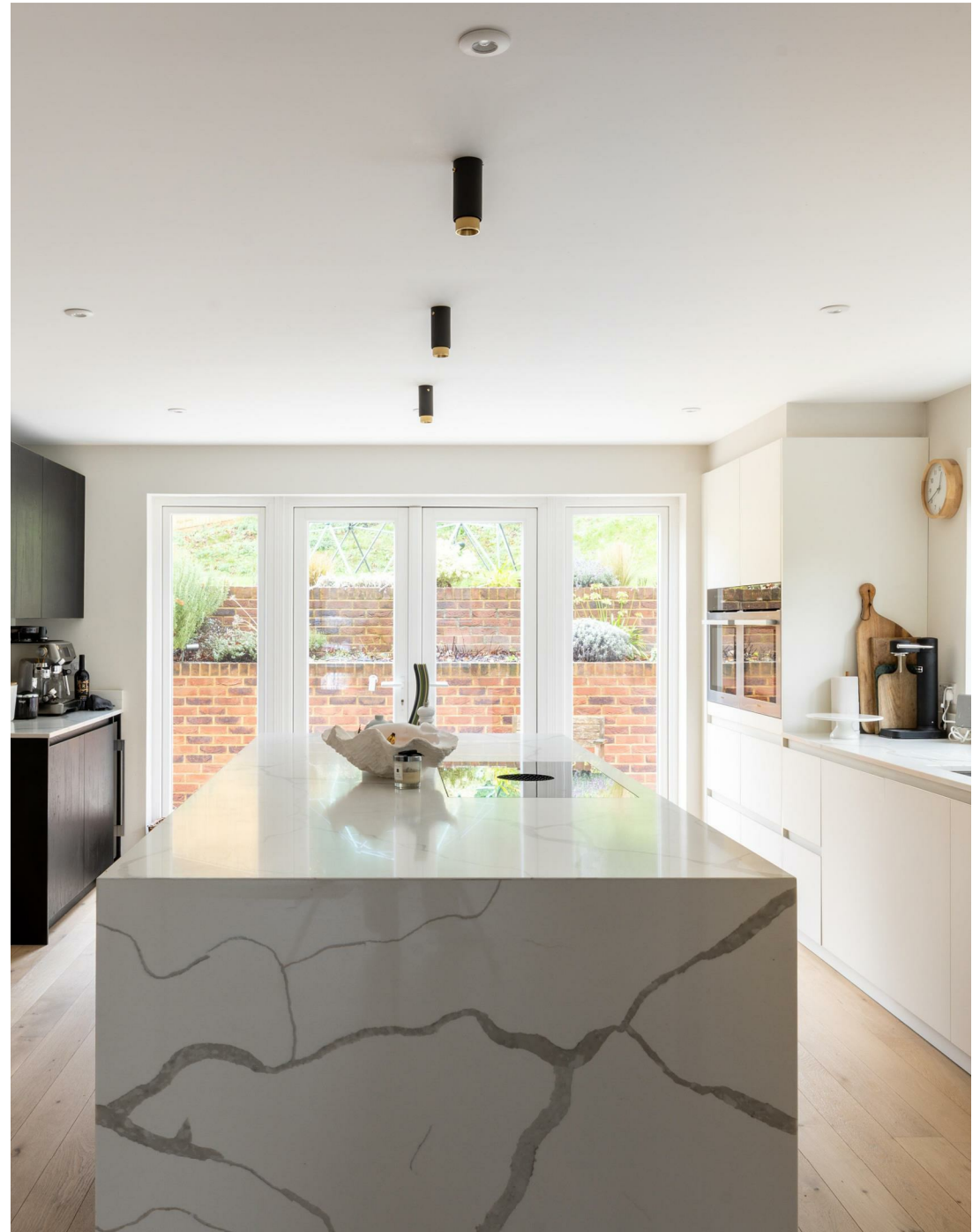


The kitchen flows seamlessly into the dining and main reception areas, creating a sociable and flexible layout ideal for everyday family life. Both the kitchen and the principal reception room open out through French doors to the rear garden, allowing natural light to pour in and offering a wonderful connection between indoor and outdoor living. The main reception room exudes warmth and character, with an elegant electric fire providing a cosy focal point, perfect for relaxed evenings in or hosting guests in a comfortable, stylish setting.

Outside, the landscaped garden offers a private and low maintenance haven, thoughtfully designed for relaxation and entertaining alike. Whether it's alfresco dining on a summer evening, weekend barbecues, or simply enjoying a quiet moment surrounded by greenery, this outdoor space enhances the home's overall appeal.

Upstairs, the sense of space continues with four beautifully proportioned bedrooms, each benefiting from large windows and high ceilings that flood the rooms with natural light. The principal bedroom suite is a standout feature, a serene and elegant retreat with its own Juliette balcony overlooking the garden, creating the perfect spot to enjoy morning coffee or unwind at the end of the day. A stylish en-suite shower room completes the space, designed with contemporary fixtures and a touch of luxury. The remaining bedrooms are equally well-appointed, making them ideal for children or guests. A modern family bathroom and a second en-suite further enhance the home's comfort and convenience.

Completing the picture is a versatile double garage, currently utilised as a home gym but offering potential for a variety of uses, from a creative studio or additional storage depending on your needs.







Beverley Heights location is ideal for families and commuters alike, known for its peaceful, tree-lined surroundings and a short stroll from the town's historic high street, where you'll find a charming mix of independent boutiques, cafes, and restaurants.

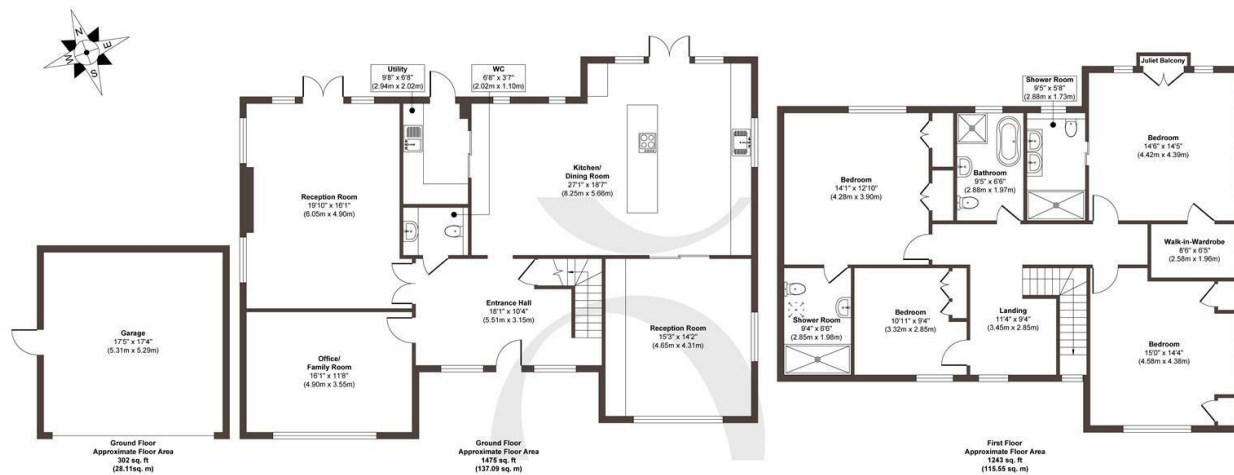
For families, the area is highly desirable due to its proximity to outstanding schools. Reigate is home to several highly-regarded educational institutions, including Reigate School and Reigate Grammar, as well as popular primary options like Holmesdale Community Infant School and St. Mary's Prep School.

Reigate train station is within walking distance, offering quick and direct services to London Victoria and London Bridge. The M25 is easily accessible via Reigate Hill, providing swift connections to the wider motorway network and Gatwick Airport, which is just a short drive away. The property's proximity to Reigate Hill is a highlight. This National Trust-owned area offers stunning views across the Surrey countryside and is perfect for dog walking, hiking, and cycling. Junction 8 Café provides a perfect spot to grab a coffee after a scenic walk.









Approx. Gross Internal Floor Area 3020 sq. ft / 280.75 sq. m

Illustration for identification purposes only, measurements are approximate, not to scale.

Produced by Elements Property

STONE

The Details

- Newly refurbished four-bedroom family home in the heart of Beverley Heights
- Generous open-plan kitchen
- Four beautifully proportioned bedrooms filled with natural light.
- Perfect garden space for summer entertaining or family relaxation.
- Perfect balance of comfort, space, and functionality for family life.
- Double garage currently adapted as a home gym.
- Quiet, family-friendly street with a welcoming community feel.

Size
Approx 3020.00 sq ft

Energy Performance Certificate (EPC)
Rating B

Council Tax Band
G



STONE

Let's *Talk*

01737 301 557

hello@stoneestateagents.co.uk

stoneestateagents.co.uk

The particulars above are a guide, not an offer or contract. Descriptions photographs and plans are not statements or representations of fact. Measurements are approximate and not to scale. Prospective purchasers must verify the accuracy of the information within the particulars. Stone does not give any representations or warranties; nor represent the Seller legally. Stone has no liability, for any costs, losses or expenses incurred by the Seller or a prospective buyer relating to the sales and buying transaction. Our Sales Disclaimer, trading names and privacy policy on how your data is processed and used is found in full on our website in our Privacy Statement.

© Stone Estate Agents 2023 All rights Reserved