

STONE



Somers Gate, RH2

£650,000

*“At Stone, we’re passionate about
the unique and awe-inspiring
architectural elements that transform
houses into dream homes.”*

The Stone Family



Nestled within a peaceful gated community in the heart of Somers Gate, Reigate, this modern terraced home, built in 2015, offers a lifestyle that perfectly balances contemporary comfort with a sense of serene seclusion. From the moment you arrive, the property impresses with its smart façade and the convenience of two allocated parking spaces, complemented by visitor parking for friends and family.

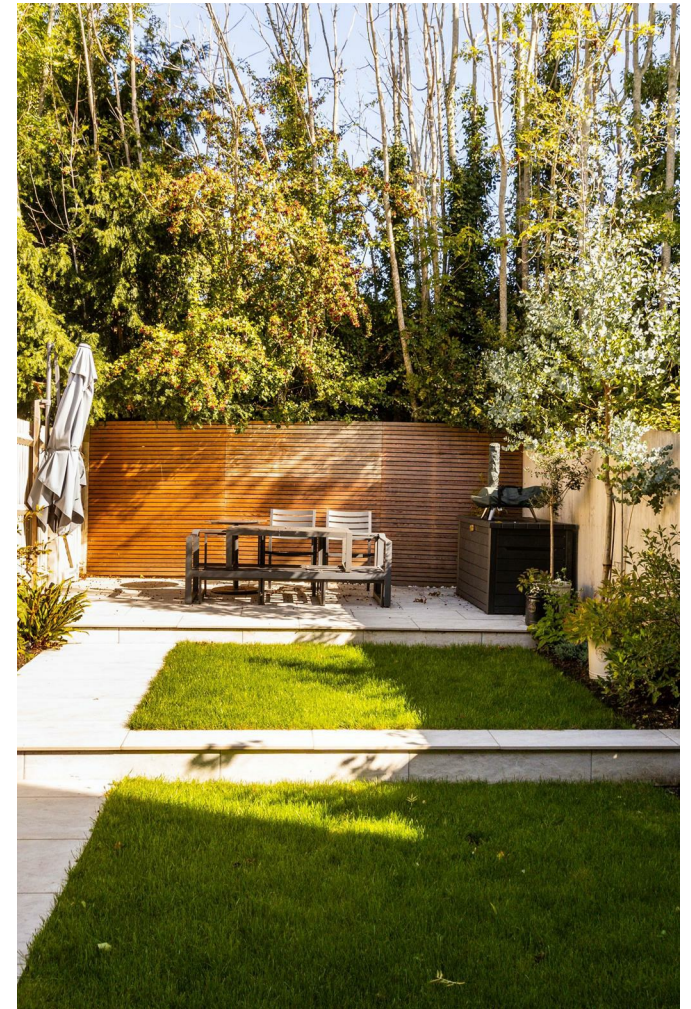


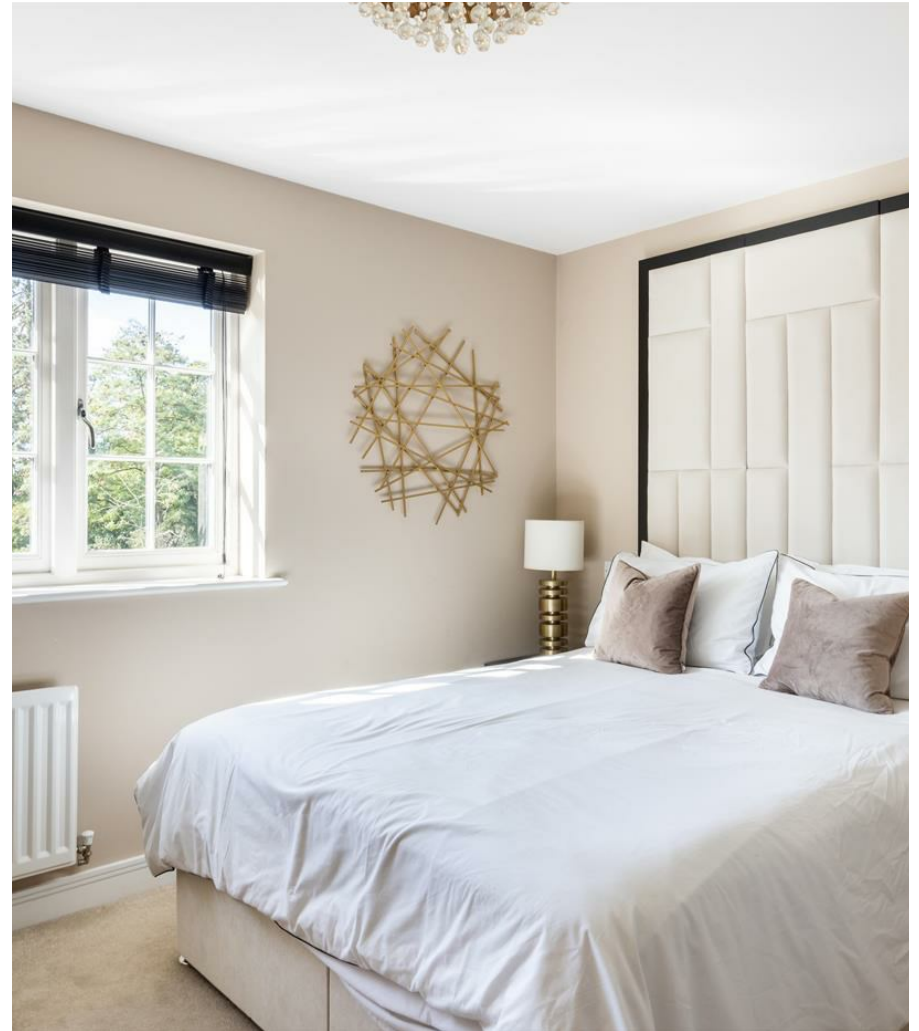
Step inside, and you are welcomed by an open-plan living, dining, and kitchen space awash with natural light. Neutral tones throughout create an airy, calm atmosphere, while underfloor heating adds a subtle touch of luxury underfoot. The design is both practical and stylish, with a downstairs cloakroom tucked away for guests. Bifold doors extend the living space seamlessly into a tiered, landscaped garden — a perfect backdrop for summer entertaining or quiet afternoons with a good book amidst your own greenery.

Upstairs, the accommodation continues to impress. Two generous double bedrooms and a single room provide versatility for family living, with one of the doubles benefiting from a private ensuite. A well-appointed family bathroom serves the remaining bedrooms, combining functionality with elegant design. Each room retains the home's signature understated elegance, offering a restful retreat at the end of the day.

This is more than a home; it is a lifestyle. Whether hosting friends in the summer sun or enjoying the quiet privacy of a gated enclave, this property combines modern convenience with a sense of homey comfort, making it a rare find in one of Reigate's most desirable location.







Reigate's historic High Street, with its boutique shops, cafes, and restaurants, is just a short distance away, providing everything from artisan coffee to fine dining. The nearby Beehive pub, a local favourite, offers a cosy setting for a meal or a drink with friends.

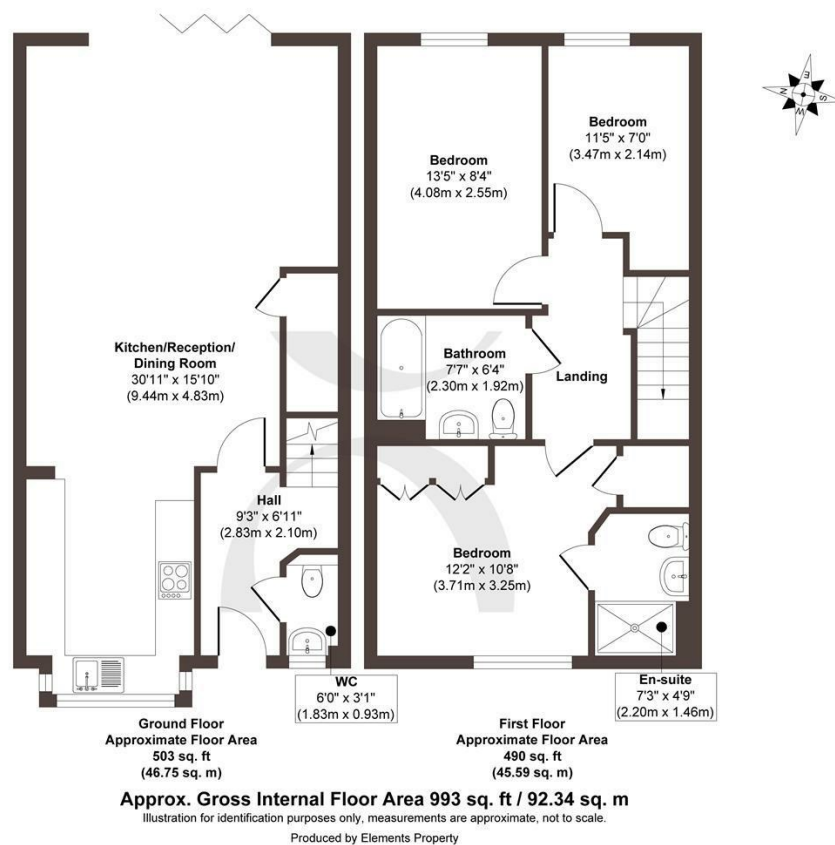
Families will appreciate the highly regarded local schools, including, Reigate Priory Junior School, Reigate School and Reigate Grammar School, all just a short drive or walk away. For professionals, Earlswood train station is within easy reach, providing direct links to London Victoria and London Bridge, while the M25 is also conveniently close for car travel.

With country walks on your doorstep and easy access to Reigate Hill, this location offers the perfect balance of town and country living.









STONE

The Details

- Located in a peaceful gated community in Somers Gate, Reigate
- Two allocated parking spaces plus visitor parking available
- Neutral décor throughout, creating a calm and airy feel
- Underfloor heating on the ground floor for added comfort
- Contemporary kitchen with space for dining
- Flexible living space to suit families or professionals
- One double bedroom with private ensuite shower room
- High-quality fixtures and fittings throughout

Size
Approx 993.00 sq ft

Energy Performance Certificate (EPC)
TBC

Council Tax Band
D



STONE

Let's *Talk*

01737 301 557

hello@stoneestateagents.co.uk

stoneestateagents.co.uk

The particulars above are a guide, not an offer or contract. Descriptions photographs and plans are not statements or representations of fact. Measurements are approximate and not to scale. Prospective purchasers must verify the accuracy of the information within the particulars. Stone does not give any representations or warranties; nor represent the Seller legally. Stone has no liability, for any costs, losses or expenses incurred by the Seller or a prospective buyer relating to the sales and buying transaction. Our Sales Disclaimer, trading names and privacy policy on how your data is processed and used is found in full on our website in our Privacy Statement.

© Stone Estate Agents 2023 All rights Reserved