

STONE



*Cliftons Lane RH2*

£2,350,000

*“At Stone, we’re passionate about  
the unique and awe-inspiring  
architectural elements that transform  
houses into dream homes.”*

---

*The Stone Family*





There are few places in Surrey where period charm, seclusion, and a deep connection to the landscape converge so harmoniously as they do along Cliftons Lane. A no-through road, lined with handsome houses dating back to the early 19th century, this sought-after address feels both tucked away and gloriously open, with Reigate Heath unfurling just beyond the hedgerows. It is here, opposite the rolling fairways of Reigate Heath Golf Club and on the edge of the North Downs.







Built in the 1920s, this red brick and tile-hung exterior home sits comfortably in its landscaped grounds, framed by mature trees and views stretching towards Box Hill. The current custodians have approached its restoration with sensitivity, reinstating character where it had been lost. A sympathetic porched entrance now welcomes guests, while laminate parquet style flooring glows once again underfoot. Even the former entrance—once forgotten—has been revived as a charming arched window, a nod to the home's original design intent.

Inside, warm tones lend a sense of calm to the five bedrooms, three bathrooms, and two reception rooms. The flow of the house is thoughtful, offering spaces to gather and to retreat. Light filters through generously sized windows, catching the soft textures of natural materials, while the kitchen and reception areas open to the garden beyond—a garden that feels very much an extension of the living space.

Spread across approximately an acre and a half, the grounds have been shaped into a series of outdoor rooms: wide south-facing lawns for play and leisure, a terrace for entertaining, a pond glinting in the afternoon sun, and a productive vegetable patch for those inclined towards self-sufficiency. It is a garden made for hosting—summer evenings stretching long with friends and family, the house itself a backdrop to life lived in harmony with nature.













Beyond the gate, Reigate Heath offers miles of dog walks and bridleways, with two much-loved country pubs—the Skimmington Castle, renowned for hearty Sunday roasts, and The Black Horse, with its generous garden and seasonal menu—both within easy reach. Families are drawn here not only for the landscape but also for proximity to Reigate’s highly regarded private schools, ensuring an excellent balance of town, country, and community life.

Clifton Cottage is more than just a house. It is a place of enduring character, beautifully set and thoughtfully restored, offering a rare opportunity to make a home in one of Reigate’s most enchanting locations.



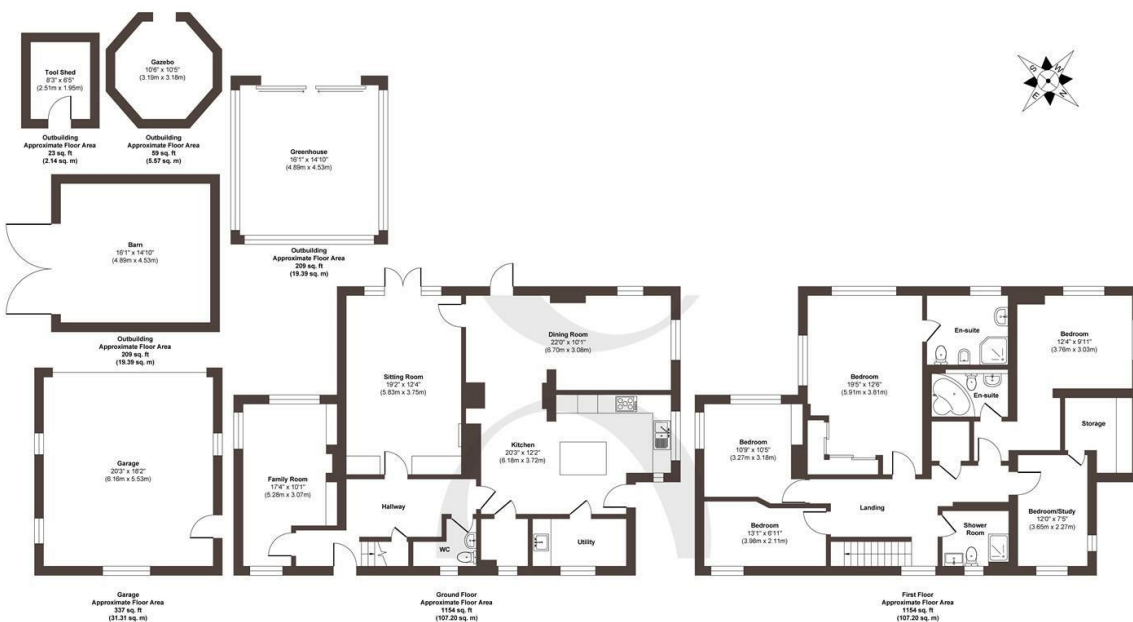












**Approx. Gross Internal Floor Area 3145 sq. ft / 292.20 sq. m (Including Garage/Outbuildings)**

Illustration for identification purposes only, measurements are approximate, not to scale.

Produced by Elements Property

STONE

## The Details

- Located on highly sought-after Cliftons Lane, a no-through road
- Characterful arched window created from former entrance
- South-facing lawns and sun terraces for entertaining
- Peaceful pond creating a focal point in the garden
- Detached garage with ample driveway parking
- Within catchment for Reigate's renowned private schools
- A rare opportunity to acquire a home of character in an exceptional setting

Size  
Approx 3145.00 sq ft

Energy Performance Certificate (EPC)  
Rating D

Council Tax Band  
E





# STONE

## Let's *Talk*

01737 301 557

[hello@stoneestateagents.co.uk](mailto:hello@stoneestateagents.co.uk)

[stoneestateagents.co.uk](https://stoneestateagents.co.uk)

The particulars above are a guide, not an offer or contract. Descriptions photographs and plans are not statements or representations of fact. Measurements are approximate and not to scale. Prospective purchasers must verify the accuracy of the information within the particulars. Stone does not give any representations or warranties; nor represent the Seller legally. Stone has no liability, for any costs, losses or expenses incurred by the Seller or a prospective buyer relating to the sales and buying transaction. Our Sales Disclaimer, trading names and privacy policy on how your data is processed and used is found in full on our website in our Privacy Statement.

© Stone Estate Agents 2023 All rights Reserved