

STONE



Eastbourne Road RH7

Offers over £1,250,000

*“At Stone, we’re passionate about
the unique and awe-inspiring
architectural elements that transform
houses into dream homes.”*

The Stone Family



Richmond House stands as a striking example of late-Victorian architecture infused with Edwardian grandeur. Approached along the private driveway, the stately red brick and mock-Tudor façade makes a powerful first impression, with chimneys rising against its countryside backdrop, its elegant proportions softened by the surrounding trees and gardens.

This is a home designed not only to impress, but to embrace family life in its most expansive and gracious form.

Stepping into the wide entrance hall, soaring ceilings, intricate cornicing, and a sweeping staircase set the tone for what lies beyond. Period detailing flows through each of the principal rooms — from the deep bay windows of the dining room to the intricately carved stone fireplace in the drawing room, each space carries a sense of heritage and craftsmanship rarely found in modern homes. Light pours through generously proportioned windows, illuminating the ornate mouldings and lending warmth to the vast reception rooms.



A study lined with bespoke oak panelling speaks to the tradition of country living, with double French doors opening onto the raised stone terrace where garden views stretch out to mature trees and rolling countryside. A billiards room, steeped in atmosphere with oak beams and panelling, offers space for entertaining on a grand scale. At the heart of the home, the kitchen blends classical styling with modern convenience — cream shaker cabinetry, a central island, and a bright conservatory that welcomes the morning sun and frames tree-filled views. Upstairs, six bedrooms are arranged across two floors, with multiple suites and bathrooms ensuring comfort for family and guests alike.

The grounds are as enchanting as the house itself. Mature trees frame a sweeping lawn, where a wraparound porch invites moments of quiet retreat or convivial al fresco dining. A swimming pool completes the picture, creating an idyllic setting for family summers and weekend gatherings. Richmond House is a home of scale, beauty, and timeless character — as welcoming as it is impressive.







Blindley Heath is a village cherished for its rural charm and open countryside, offering endless opportunities for country walks and outdoor pursuits. Woodland paths and sweeping fields stretch in every direction, while nearby Godstone and Lingfield provide a rich array of amenities, from traditional pubs and independent shops to equestrian facilities and golf clubs.

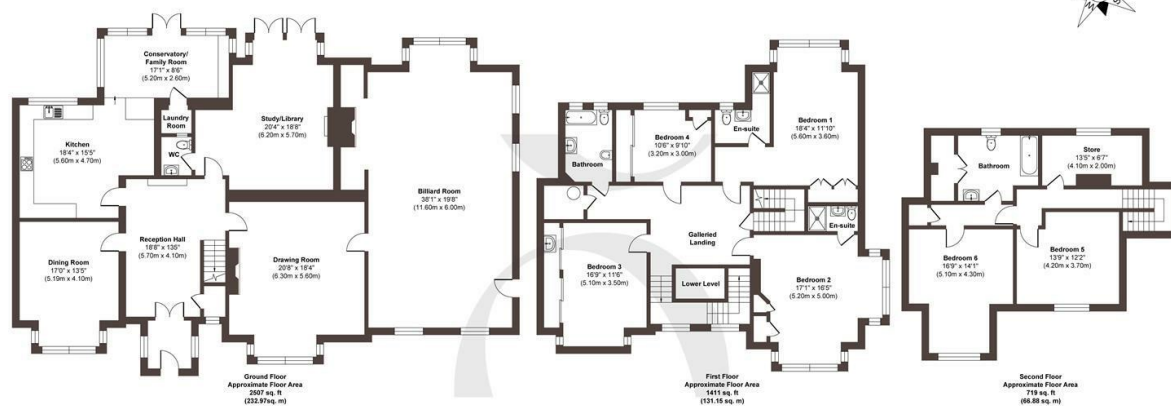
For families, Hawthorns School is just a short drive away, with other excellent independent and state schools accessible in Oxted, Reigate, and surrounding towns. Travel connections are convenient: Godstone train station provides links to London via Redhill, while Lingfield and Oxted stations offer direct services to London Victoria. For those who travel frequently, Gatwick Airport lies just over twenty minutes away, making international travel remarkably straightforward. The M25 is close at hand, opening access to Surrey, Kent, and the coast.

The nearby town of Oxted presents a vibrant high street with boutiques, cafés, and restaurants, alongside leisure facilities including a popular Everyman cinema. Godstone's historic village green and Lingfield's famous racecourse add further appeal, ensuring that life at Richmond House combines the serenity of the countryside with the ease of modern connectivity.









Approx. Gross Internal Floor Area 4637 sq. ft / 431.00 sq. m

Illustration for identification purposes only, measurements are approximate, not to scale.

Produced by Elements Property

STONE

The Details

- Distinguished stately late-Victorian residence with Edwardian influence
- Exceptional period detailing throughout, including ornate corning, carved stone fireplaces, and bespoke joinery
- Four elegant reception rooms including a grand drawing room and oak-panelled study
- Gallery-style landing and sweeping staircase with original detailing
- Six double bedrooms and four well-appointed bathrooms across two upper floors
- Swimming pool set within mature gardens bordered by trees and open countryside
- Perfectly situated for Lingfield, Godstone, Oxted and Reigate

Size
Approx 4637.00 sqft

Energy Performance Certificate (EPC)
Rating D

Council Tax Band
H



STONE

Let's *Talk*

01737 301 557

hello@stoneestateagents.co.uk

stoneestateagents.co.uk

The particulars above are a guide, not an offer or contract. Descriptions photographs and plans are not statements or representations of fact. Measurements are approximate and not to scale. Prospective purchasers must verify the accuracy of the information within the particulars. Stone does not give any representations or warranties; nor represent the Seller legally. Stone has no liability, for any costs, losses or expenses incurred by the Seller or a prospective buyer relating to the sales and buying transaction. Our Sales Disclaimer, trading names and privacy policy on how your data is processed and used is found in full on our website in our Privacy Statement.

© Stone Estate Agents 2023 All rights Reserved