

STONE



Bassett Drive RH2

£1,175,000

*“At Stone, we’re passionate about
the unique and awe-inspiring
architectural elements that transform
houses into dream homes.”*

The Stone Family



This architect-designed eco home is discreetly set back from the road, accessed via secure electric gates that open to a peaceful and private setting. Built just over a decade ago, it blends modern design with environmentally friendly living, featuring a living green roof that improves insulation, supports local biodiversity, and adds a striking visual element. The house is single-storey, yet its soaring ceilings and cleverly zoned layout create the feeling of a much larger space, combining ease of living with a bold sense of style.

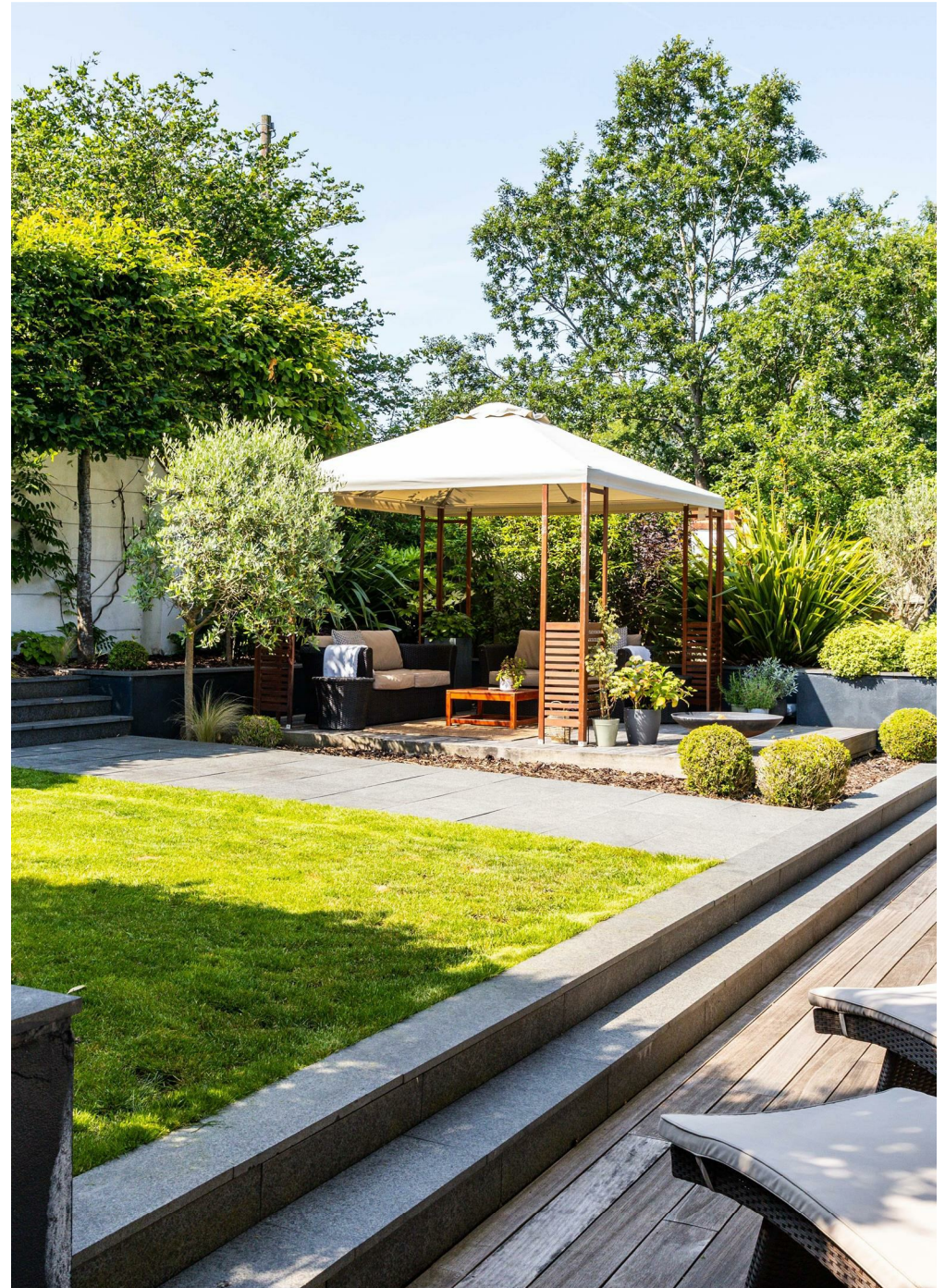
To the front, the Mediterranean-inspired garden sets the tone with structured pleached trees, warm-toned decking, a central lawn, and a sunken patio – ideal for al fresco dining or lounging in the sun. The landscaping is designed to feel both low-maintenance and luxurious, echoing a holiday home vibe right in central Reigate. A second, more secluded rear garden brings a contrasting atmosphere – leafy, wild, and tranquil – providing a natural retreat filled with mature trees and birdsong. On-road parking is available immediately outside the property, with the added bonus of visitor bays along the road, ensuring practicality doesn't compromise peace and privacy.



Inside, the home opens into a stunning, open-plan living space that perfectly balances clean, modern architecture with a warm, relaxed atmosphere. Floor-to-ceiling glazing along the rear elevation invites sunlight to pour into the room throughout the day, while high ceilings and a thoughtful layout create a remarkable sense of space. The entire living area is designed with connection in mind – whether that's cooking while chatting to guests, dining as a family, or relaxing with a view of the garden.

The interior aesthetic is clean and contemporary, softened by natural materials and neutral tones that lend a calming, almost Mediterranean feel. A subtle level change leads you to the bedroom wing, where you'll find four generously sized double bedrooms. Each room enjoys good proportions and lovely natural light, making them ideal for both family life and flexible home working. The principal bedroom includes a sleek, modern ensuite shower room and bespoke built-in wardrobes, while the main bathroom offers a stylish mix of statement tiling, modern fittings, and excellent space – perfect for busy mornings or long evening baths.

This is also a home built for efficiency, with excellent insulation and environmentally conscious design delivering an impressive A-rated Energy Performance Certificate (EPC) – meaning it not only looks beautiful, but is cost-effective and sustainable to run.







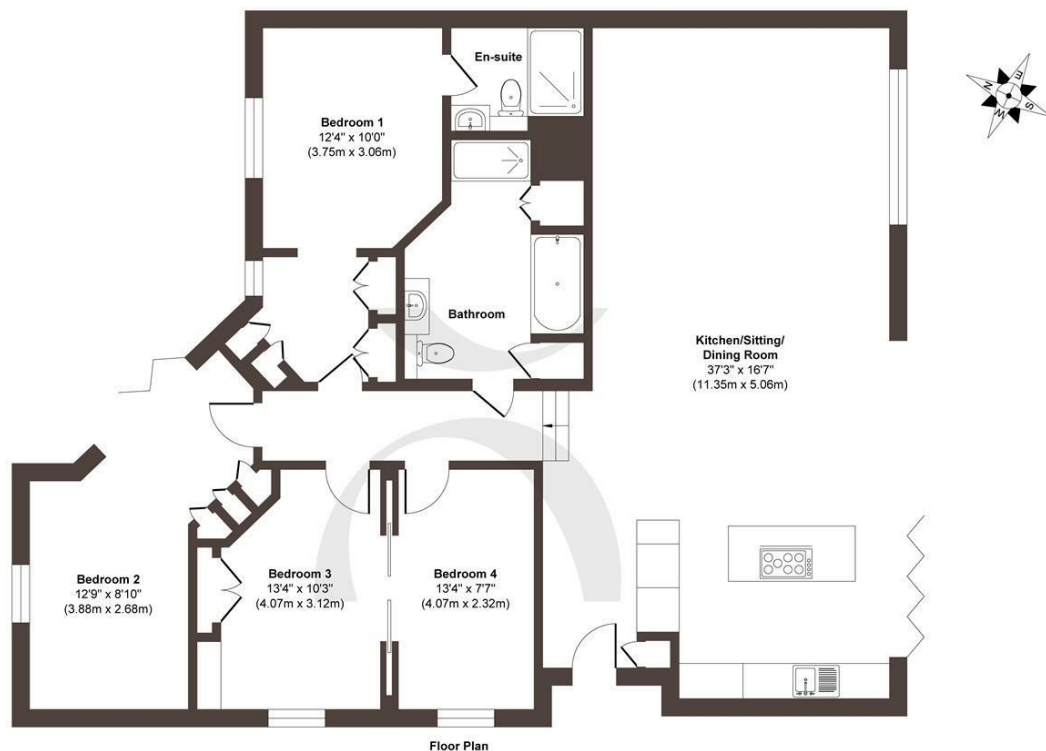
Positioned on Basset Drive, one of Reigate's best-kept secrets, this home enjoys an unbeatable central location while remaining completely hidden from view. You're just a short, flat walk from Reigate's vibrant town centre, where you'll find artisan bakeries, coffee shops, independent retailers, and a fantastic selection of pubs and restaurants. Priors Park and Reigate Station are also within easy reach, making it ideal for both daily living and commuting.

Despite being in the very heart of town, the property feels worlds away – a private oasis tucked behind gates, where you could easily imagine yourself somewhere in southern Europe. Whether you're upsizing, downsizing, or simply searching for something distinctive, this home offers the perfect balance of lifestyle, location, and design – and does so with the future in mind, thanks to its exceptional energy rating and eco-conscious construction.









Approx. Gross Internal Floor Area 1524 sq. ft / 141.60 sq. m

Illustration for identification purposes only, measurements are approximate, not to scale.

Produced by Elements Property

STONE

The Details

- Four bedroom modern eco home
- A desirable central Reigate location
- Living roof and an A EPC rating
- Two beautifully presented bathrooms
- Air source heating
- Private, with a gated entrance
- Front and rear gardens
- Mediterranean inspired design

Size
Approx 1528.49 sq ft

Energy Performance Certificate (EPC)
Rating A

Council Tax Band
G



STONE

Let's *Talk*

01737 301 557

hello@stoneestateagents.co.uk

stoneestateagents.co.uk

The particulars above are a guide, not an offer or contract. Descriptions photographs and plans are not statements or representations of fact. Measurements are approximate and not to scale. Prospective purchasers must verify the accuracy of the information within the particulars. Stone does not give any representations or warranties; nor represent the Seller legally. Stone has no liability, for any costs, losses or expenses incurred by the Seller or a prospective buyer relating to the sales and buying transaction. Our Sales Disclaimer, trading names and privacy policy on how your data is processed and used is found in full on our website in our Privacy Statement.

© Stone Estate Agents 2023 All rights Reserved